



Quarterly Statistical First Release

Publication date:27th October 2011(Updated 29th November 2011 –
Vocational Qualifications only)**Next Updated:**

January 2012

Reference: DS/SFR12**Coverage:** England**Theme:** Children, Education and Skills**For further information contact:****Data Service: Service Desk**[servicedesk@thedata-service.org.uk](mailto: servicedesk@thedata-service.org.uk)

0870 267 0001

Or view our web site at:<http://www.thedata-service.org.uk/statistics>**Lead Statistician:**

Jessie Evans

Jessie.Evans@bis.gsi.gov.uk

020 7215 1868

Department for Business, Innovation
and Skills,

Level 2,

1 Victoria Street,

London,

SW1H 0ET

© Data Service 2011

Publication reference number

Skills Funding Agency-P-110193

Post-16 Education & Skills: Learner Participation, Outcomes and Level of Highest Qualification Held

1. This is a Department for Business, Innovation and Skills (BIS) Statistical First Release (SFR), and updates information published on 23rd June 2011. It includes information on government-funded¹ participation, achievement and success rates for post-16 education² (excluding schools and Higher Education) in England, between 2005/06 and 2009/10.
2. The SFR includes final data for the 2009/10 academic year, and provisional data for the full 2010/11 academic year. These data will be revised and updated in the January 2012 SFR, when final data for the full 2010/11 academic year will be presented.
3. It shows key statistics on the level of highest qualification held by adults in England from 2006 to 2009, calculated from Labour Force Survey (LFS) data. These include attainment rates for specific priority groups of adult learners in the population that are of key interest within BIS and the Skills Funding Agency. Provisional estimates from the Labour Force Survey on the level of highest qualification held by adults in England in 2010 are also included in the release.
4. This SFR also shows the number of vocational qualifications awarded in the United Kingdom, as collected by the Office of Qualifications and Examinations Regulation (Ofqual) and through the National Vocational Qualifications Database.

¹ Covering the Skills Funding Agency and the Young People's Learning Agency.

² Post-16 education includes provision delivered in FE organisations, sixth form colleges, independent training organisations, local authorities and other providers. This includes programmes such as Apprenticeships. For more information on the scope of this release, please see paragraphs 47 to 49.

CONTENTS

Statistical Commentary

Summary of Further Education Statistics for England, 2009/10.....	Page 3
Glossary of Key Terms.....	Page 4
Learner Participation and Achievement in Further Education.....	Page 5
Apprenticeships.....	Page 6
Learner Responsive Learning.....	Page 8
Workplace Learning.....	Page 9
Skills for Life.....	Page 9
Adult Safeguarded Learning.....	Page 11
University for Industry.....	Page 11
Success Rates.....	Page 11
Headlines for Provisional Data for Full 2010/11 Academic Year.....	Page 13
Changes Included in this SFR.....	Page 15
Changes in the Next SFR.....	Page 15

Supporting Data

Scope.....	Page 15
Data Sources.....	Page 16
Issues with Using Provisional Data.....	Page 17
Issues with Comparing Data Across Academic Years.....	Page 18
Data Definitions.....	Page 19
Publication Cycle Across the Year.....	Page 19
Supplementary Tables.....	Page 20
Related National Statistics Releases.....	Page 20
Other Related Statistics.....	Page 21
Further Education Statistics for Other Countries in the UK.....	Page 21

Table Guide	Page 22
--------------------------	---------

Table Footnotes	Page 23
------------------------------	---------

Tables	Page 25
---------------------	---------

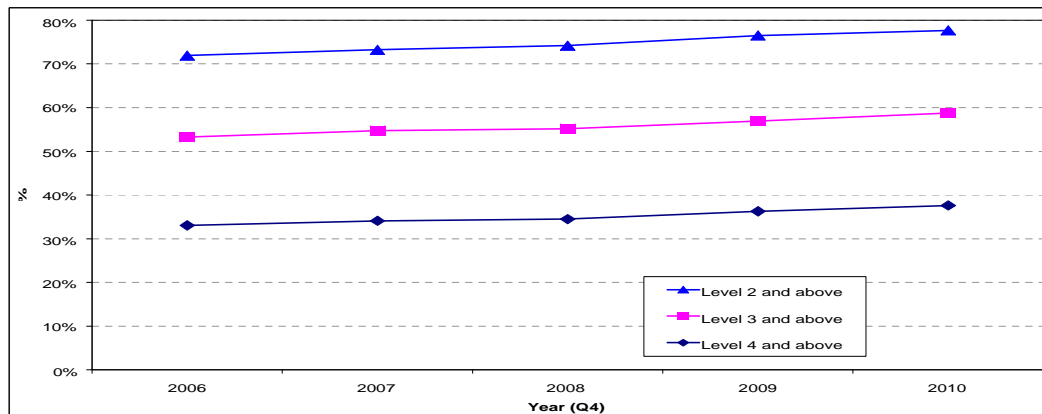
SUMMARY OF FURTHER EDUCATION STATISTICS FOR ENGLAND, 2009/10

Adult Attainment in the Population in 2010

5. The Labour Force Survey is used to measure the level of adult educational attainment in the population. Provisional data for 2010 show that of men aged 19 to 64 and women aged 19 to 59 [Table 12.1]:

- 77.7 per cent were qualified to at least Level 2;
- 58.8 per cent were qualified to at least Level 3;
- 37.6 per cent were qualified to Level 4 and above.

Chart 1: Highest Level of Qualification Held by Adults of Working Age

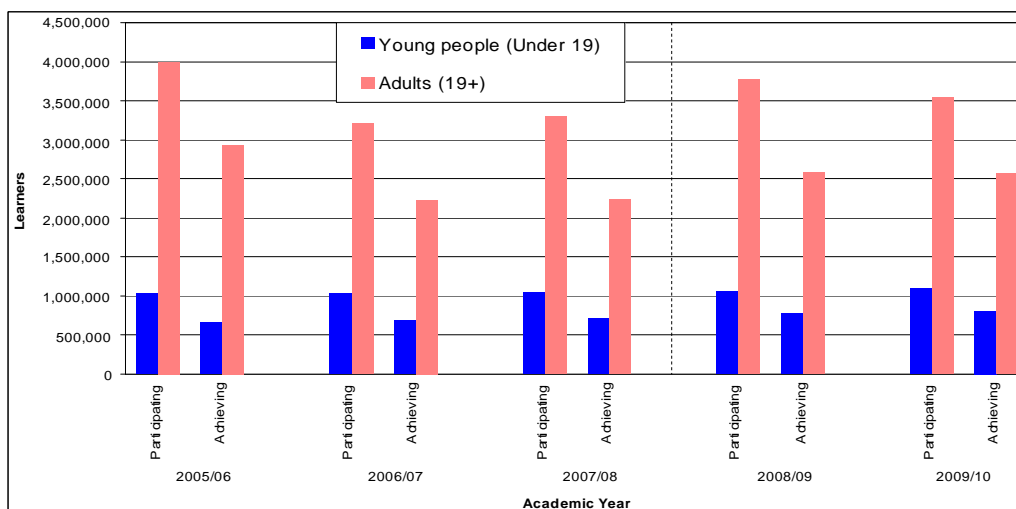


Learner Participation and Achievement in Government-funded Further Education

6. The total number of learners participating in government-funded further education (excluding schools) fell by 4.2 per cent to 4,635,500 in 2009/10. This was due to a 6.1 per cent fall in adult (aged 19 and over) learners participating, but countered by a 2.7 per cent increase in the number of 16–18 year olds participating [Table 7.1].

7. The total number of learners achieving a government-funded further education qualification (excluding schools) remained broadly the same between 2008/09 and 2009/10, at over 3.3 million learners [Table 7.2].

Chart 2: Learner Participation and Achievement in Government-funded Further Education by Age Group (excluding schools)



GLOSSARY OF KEY TERMS

Further Education and Skills includes learners who are studying on a course at a further education college or training provider, learners who are studying a course within their local community, employees undertaking an Apprenticeship, and employees undertaking other qualifications in the workplace.

Apprenticeships are paid jobs that incorporate on- and off-the-job training leading to nationally recognised qualifications. As an employee, Apprentices earn as they learn and gain practical skills in the workplace.

An Apprenticeship framework typically contains the following separately certified elements.

- A knowledge-based element (the theoretical knowledge underpinning a job in a certain occupation and industry, typically certified via a Technical Certificate).
- A competence-based element (the ability to discharge the functions of a certain occupation, typically certified via work-based assessed national vocational qualifications – NVQs).
- Transferable skills (literacy and numeracy) – key skills / functional skills.
- A module on employment rights and responsibilities.

See <http://www.apprenticeships.org.uk/> for further information on Apprenticeships.

Learner Responsive Learning covers further education learning delivered mainly in a classroom, workshop, or through distance or e-learning. For further information on Learner Responsive Learning, please see <http://skillsfundingagency.bis.gov.uk/providers/programmes/alr/>.

Workplace Learning covers a broad range of training – from basic skills to Level 2, Level 3 and other higher-level skills such as Leadership and Management. This training is mainly delivered through the workplace (excluding Apprenticeships). Between 2005/06 and 2009/10 this included the Train to Gain programme. For further information on Train to Gain and Employer-based provision, please see <http://skillsfundingagency.bis.gov.uk/providers/programmes/ttg/>

Skills for Life qualifications are designed to give people the reading, writing, maths and communication skills they need in everyday life, to operate effectively in work and to help them succeed on other training courses. For further information on Skills for Life, please see <http://skillsfundingagency.bis.gov.uk/providers/programmes/skillsforlife/>

University for Industry delivers further education courses through the provider learndirect. Learners can study at a local centre, or via the Internet. For more information on University for Industry, please see www.ufi.com

Adult Safeguarded Learning (ASL) funds a wide range of informal adult and community learning courses, ranging from personal development through to older people's learning, IT courses, employability skills, family learning and activities to promote civic engagement and community development. Courses may be offered by local authorities, colleges, and voluntary and community groups, and include activity specifically targeted at deprived areas and disadvantaged groups. More information on Adult Safeguarded Learning and the different programmes can be found at: <http://skillsfundingagency.bis.gov.uk/providers/programmes/asl>

Full Level 2 is equivalent to an NVQ at Level 2, or 5 GCSEs. The widths of all of a learner's Level 2 aims are summed to establish whether a learner is taking a full Level 2 programme.

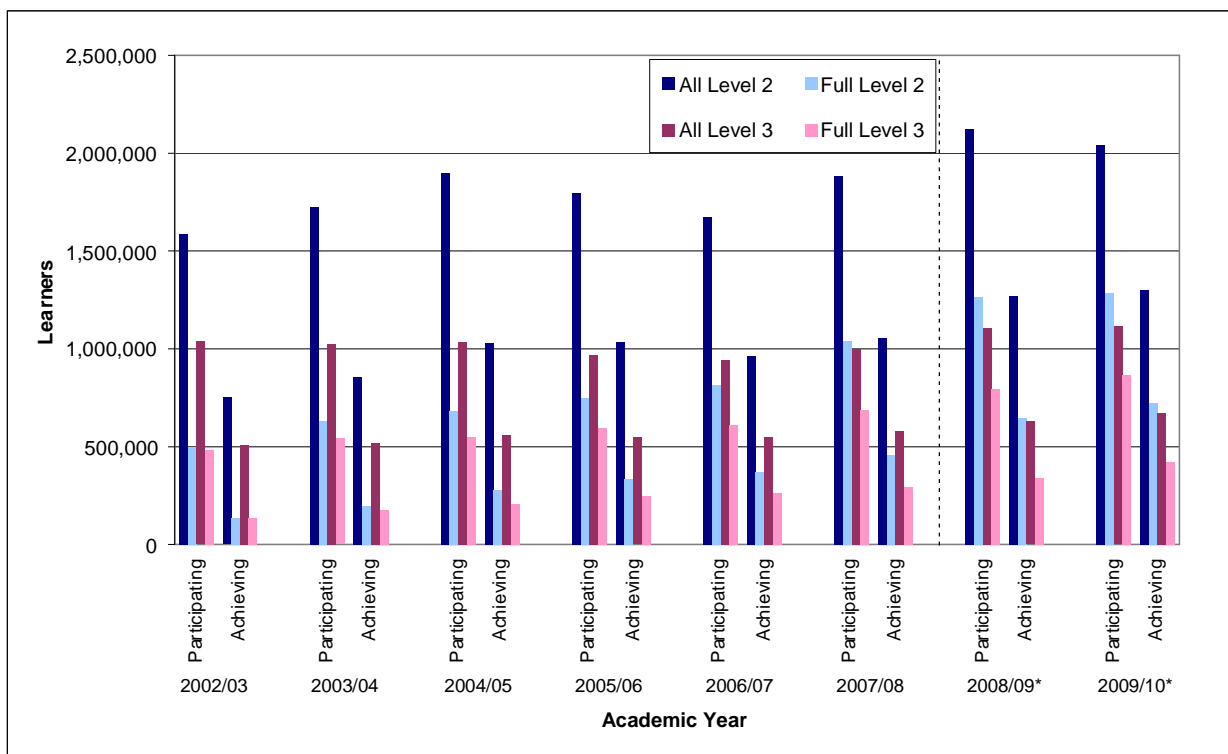
Full Level 3 is equivalent to an NVQ at Level 3, or 2 A-Levels. The widths of all a learner's Level 3 aims are summed to establish whether a learner is taking a full Level 3 programme.

Academic year runs from 1st August to 31st July (except for Ofqual figures in Table 14).

Learner Participation and Achievement in Further Education

8. This section reports on 2009/10 learner participation and achievement in further education (excluding schools). 2009/10 is the latest academic year for which we have final, full-year data which we can use to accurately report learner participation and achievement. Provisional data for the full 2010/11 academic year (August 2010 to July 2011) are presented separately, starting from page 13 of this release.
9. Chart 3 shows the number of learners participating in and achieving a Level 2 (equivalent to GCSE level) or Level 3 (equivalent to A-Level) qualification in government-funded further education (excluding schools) between the 2002/03 and 2009/10 academic years. Chart 3 shows that the number of learners participating in and achieving Level 2 and Level 3 courses followed a similar trend between 2002/03 and 2009/10. There was a gradual increase in learners between 2002/03 and 2004/05, followed by a two year decline. The number of learners participating in and achieving full Level 2 and full Level 3 courses increased in every year shown.

Chart 3: Total Learner Participation and Achievement in Government-funded Further Education by Level (excluding schools)



***Note: Learner Numbers for 2008/09 onwards are not directly comparable with earlier years. See paragraph 59 onwards for more information.**

10. Some 4,635,500 learners participated in some form of government-funded further education (excluding schools) in the 2009/10 academic year [Table 7.1]. This includes learners across all of the learning routes outlined in the Glossary on Page 4 of this release. This is a decrease in learner participation of 4.2 per cent compared to 2008/09. The main reduction has been in the number of learners participating on below Level 2 and non-full Level 2 courses.

11. Of all learners in 2009/10:

- 2,045,200 learners participated on a Level 2 course, a decrease of 3.8 per cent compared to 2008/09. Of these, 1,286,500 learners were studying a full Level 2 qualification, an increase of 1.8 per cent [Table 7.1];
- 1,115,000 learners participated on a Level 3 course, an increase of 0.9 per cent compared to 2008/09. Of these, 867,000 learners were studying a full Level 3 qualification, an increase of 9.0 per cent [Table 7.1].
- 1,095,000 were aged under 19, an increase of 2.7 per cent compared to 2008/09 [Table 10.1].
- 3,540,500 were aged 19 or over, a decrease of 6.1 per cent compared to 2008/09 [Table 2.1].

12. Some 3,377,400 learners achieved a government-funded further education qualification (excluding schools) in the 2009/10 academic year [Table 7.2]. This is an increase of 0.5 per cent compared to 2008/09. Of these:

- 1,302,500 learners achieved a Level 2 qualification, an increase of 2.7 per cent compared to 2008/09. Of these, 721,100 learners achieved a full Level 2 qualification, an increase of 11.9 per cent;
- 674,600 learners achieved a Level 3 qualification, an increase of 7.4 per cent compared to 2008/09. Of these, 421,500 learners achieved a full Level 3 qualification, an increase of 24.7 per cent;
- 809,600 were aged under 19, an increase of 4.4 per cent compared to 2008/09 [Table 10.2].
- 2,567,700 were aged 19 or over, a decrease of 0.6 per cent compared to 2008/09 [Table 2.2].

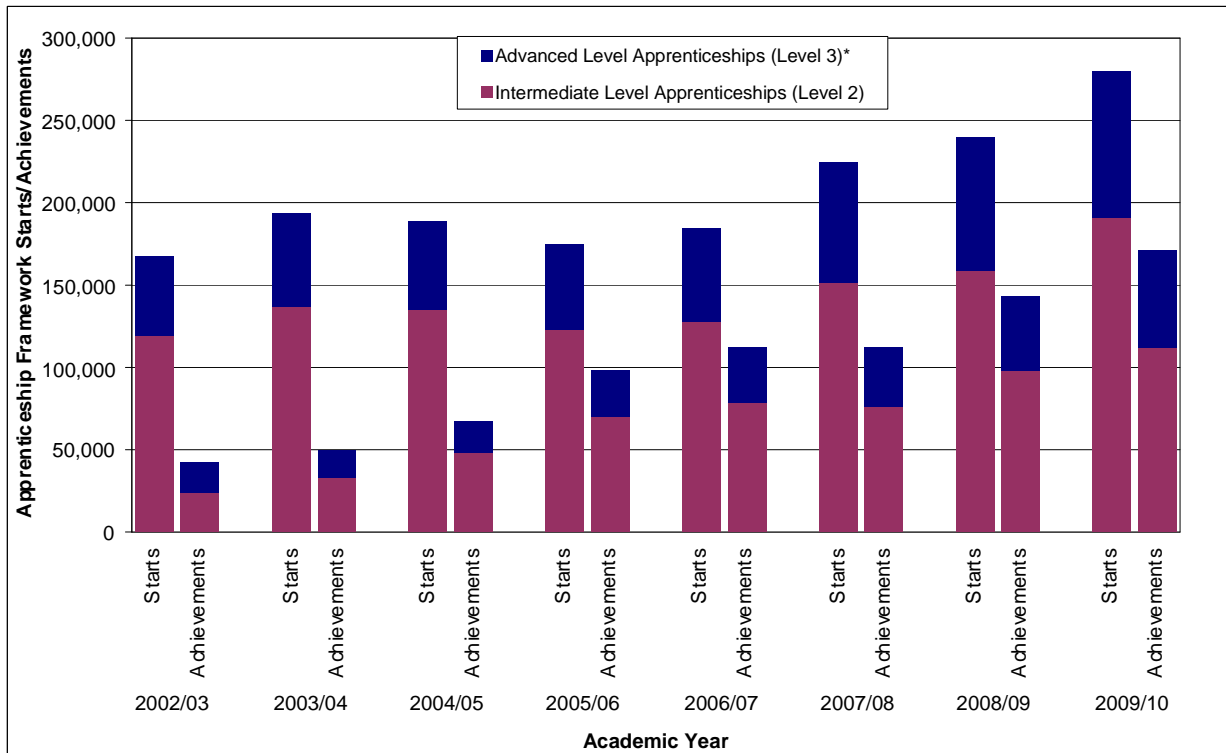
13. Of the 4,635,500 learners participating in further education (excluding schools) in 2009/10 [Table 1]:

- 54.9 per cent were female, 45.1 per cent were male;
- 12.1 per cent of learners declared a learning difficulty, disability or health problem;
- 17.5 per cent of learners were from a Black or Minority Ethnic background (including Mixed, Asian, Black and Chinese or Other Ethnic Group learners);
- 23.6 per cent of learners were aged under 19; 76.4 per cent were aged 19 or over.

Apprenticeships

14. Chart 4 shows that following a fall between 2004/05 and 2005/06, Apprenticeship starts have increased steadily. Apprenticeship framework achievements have increased steadily since 2002/03, both for Intermediate Level Apprenticeships and Advanced Level Apprenticeships.

Chart 4: Total Government-funded Apprenticeship Starts and Framework Achievements by Level



***Note: Advanced Level Apprenticeship figures include a small number of Higher Apprenticeships**

15. The length of an Apprenticeship is typically more than a year. Because of this, the number of achievements is below the number of starts in Chart 4, as a large volume of learners that have started an Apprenticeship framework have not yet completed it.

Starts

16. The total volume of Apprenticeship starts in 2009/10 was 279,700 [Table 8.1]. This was an increase of 16.6 per cent compared to 2008/09. Of these there were:

- 190,500 Intermediate Level Apprenticeship starts, a 20.2 per cent increase on 2008/09;
- 87,700 Advanced Level Apprenticeship starts, a 7.9 per cent increase on 2008/09.
- 1,500 Higher Apprenticeship starts, up from 200 in 2008/09.
- Learners under the age of 19 started 116,800 Apprenticeship frameworks, a 17.5 per cent increase on 2008/09 [Table 8.1];
- Learners aged 19–24 started 113,800 Apprenticeship frameworks, a 34.3 per cent increase on 2008/09 [Table 8.1];
- Learners aged 25 and over started 49,100 Apprenticeship frameworks, a 12.1 per cent fall compared to 2008/09 [Table 8.1].

Framework Achievements

17. The total volume of Apprenticeship framework achievements in 2009/10 was 171,500 [Table 8.2]. This was an increase of 19.6 per cent compared to 2008/09. Of these there were:

- 111,900 Intermediate Level Apprenticeship framework achievements, a 14.0 per cent increase on 2008/09;

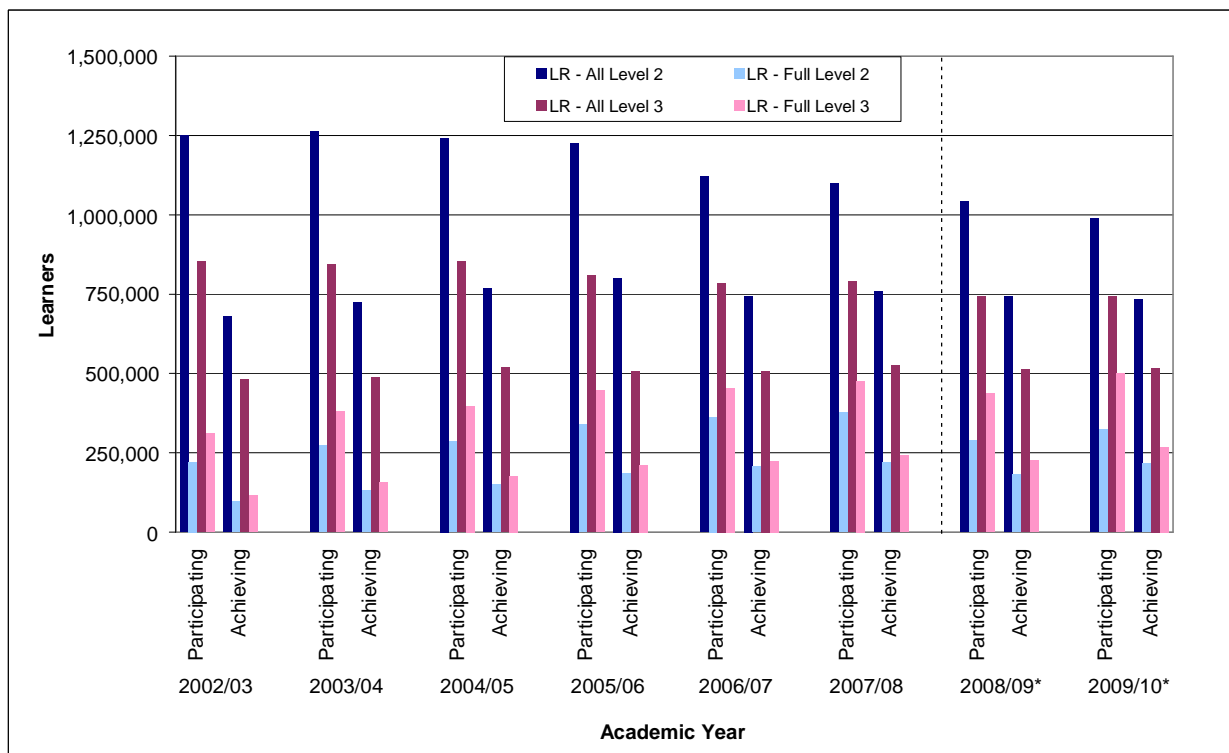
- 59,400 Advanced Level Apprenticeship framework achievements, a 31.4 per cent increase on 2008/09.
- 200 Higher Apprenticeship framework achievements.
- Learners aged under 19 achieved 73,100 Apprenticeship frameworks, a 7.9 per cent increase on 2008/09 [Table 8.2];
- Learners aged 19–24 achieved 64,200 Apprenticeship frameworks, a 10.9 per cent increase on 2008/09 [Table 8.2];
- Learners aged 25 and over achieved 34,300 Apprenticeship frameworks, almost double the volume compared to 2008/09 [Table 8.2].

Learner Responsive Learning

18. Learner Responsive learning covers further education learning delivered mainly in a classroom or workshop (excluding schools). Chart 5 shows that since 2003/04, the number of learners participating on Learner Responsive Level 2 and Level 3 courses has gradually fallen. This fall has been offset by a rise in learner starts in workplace learning over the period, including the Apprenticeship and Train to Gain programmes. The numbers of learners participating on Learner Responsive full Level 2 and full Level 3 courses increased in the majority of years shown.

19. Despite the reduction in learner participation on Level 2 and Level 3 Learner Responsive courses, the number of learners achieving a qualification has been fairly consistent over the period. This is due to a steady increase in the further education success rate, meaning that a higher proportion of qualifications undertaken each year have been successfully achieved.

Chart 5: Total Learner Responsive Participation and Achievement in Government-funded Further Education by Level (excluding schools)



*Note: Learner Numbers for 2008/09 onwards are not directly comparable with earlier years. See paragraph 59 onwards for more information.

20. There were 987,700 learners participating on a Level 2 qualification in 2009/10 through Learner Responsive provision [Table 1]. This is a decrease of 5.0 per cent compared to 2008/09. Of these:
- 450,300 were aged under 19, an increase of 2.1 per cent compared to 2008/09;
 - 537,400 were aged 19 or over, a decrease of 10.3 per cent compared to 2008/09.
21. There were 742,600 learners participating on a Level 3 qualification in 2009/10 through Learner Responsive provision [Table 1]. This is approximately the same number of learners as in 2008/09. Of these:
- 464,300 were aged under 19, a 5.1 per cent increase compared to 2008/09 ;
 - 278,300 were aged 19 or over, a decrease of 7.5 per cent compared to 2008/09.

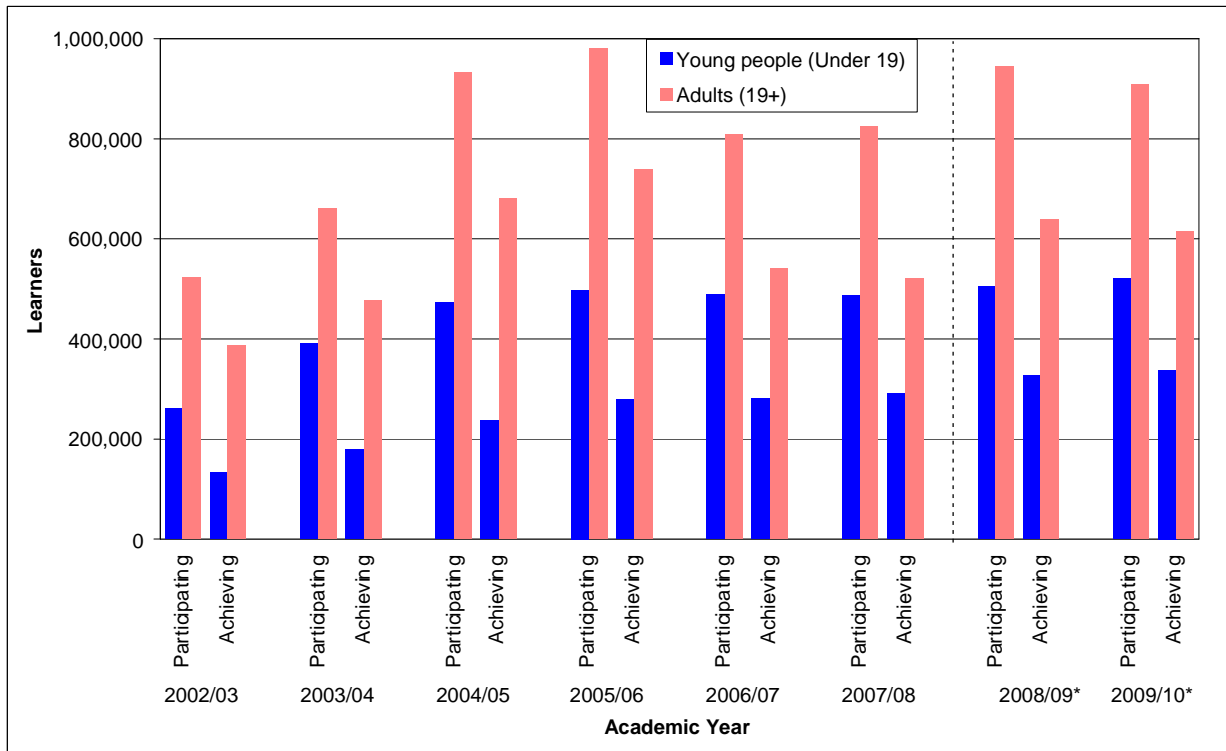
Workplace Learning

22. Train to Gain was a national skills service aimed at meeting the needs of employers of all sizes and from all sectors to improve the skills of their adult employees as a route to improving their business performance. A broad range of training was covered – from basic skills to Level 2, Level 3 and other higher-level skills such as Leadership and Management. Train to Gain was abolished following a letter from the BIS Secretary of State to the Skills Funding Agency Chief Executive in June 2010. Instead FE colleges and providers are expected to focus public funding for workplace learning outside of Apprenticeships on smaller employers.
23. Train to Gain was launched in April 2006. In 2009/10 there were 574,900 Train to Gain starts [Table 5.1]. Over two-thirds of Train to Gain starts in 2009/10 were at Level 2, with a large proportion also at Level 3, or on Skills for Life courses.
24. In 2009/10, learners achieved 538,300 Train to Gain qualifications [Table 5.2]. In line with starts, over two-thirds of Train to Gain achievements were at Level 2 in 2009/10, with a significant proportion also at Level 3 or on Skills for Life.

Skills for Life

25. Chart 6 shows that learner participation on Skills for Life courses (excluding schools) has fluctuated since 2002/03. Following a steady rise from 2002/03, there was a decline between 2005/06 and 2006/07, particularly for learners aged 19 and over. Since 2008/09 participation figures have fallen slightly for learners over the age of 19, while figures for learners aged under 19 have stayed broadly flat.

Chart 6: Learner Participation and Achievement on Skills for Life Courses by Age Group (excluding schools)



***Note: Learner Numbers for 2008/09 onwards are not directly comparable with earlier years. See paragraph 59 onwards for more information.**

26. In 2009/10, 1,430,600 learners of all ages participated on a Skills for Life course (excluding schools) [Table 7.1]. This is a decrease of 1.3 per cent compared to 2008/09. Of these:

- 521,500 were aged under 19 [Table 10.1];
- 909,100 were aged 19 or over [Table 2.1].
- 961,600 learners participated on a Literacy course [Table 9];
- 882,800 learners participated on a Numeracy course [Table 9];
- 201,500 learners participated on an English for Speakers of Other Languages (ESOL) course [Table 9].

Note that some learners undertake more than one type of Skills for Life qualification within an academic year, and hence the sum of Literacy, Numeracy and ESOL participation is greater than the total number of learners participating.

27. In 2009/10, 952,400 learners achieved a Skills for Life qualification (excluding schools) [Table 7.2]. This is a decrease of 1.4 per cent compared to 2008/09. Of these:

- 337,800 were aged under 19 [Table 10.2];
- 614,600 were aged 19 or over [Table 2.2].
- 577,200 learners achieved a Literacy qualification [Table 9];
- 521,600 learners achieved a Numeracy qualification [Table 9];
- 144,300 learners achieved an ESOL qualification [Table 9].

Note that some learners achieve more than one type of Skills for Life qualification within an academic year, and hence the sum of Literacy, Numeracy and ESOL achievements is greater than the total number of learners achieving.

Adult Safeguarded Learning

28. In 2009/10, 752,800 learners participated on an Adult Safeguarded Learning course, and there were 663,000 achievements [Table 6]. Of these:

- 579,200 learners took a Personal and Community Development Learning course, and 505,900 learners achieved;
- 43,700 learners took a Neighbourhood Learning in Deprived Communities course, and 39,800 learners achieved;
- 71,300 learners took a Family Literacy, Language and Numeracy course, and 62,700 learners achieved;
- 79,600 learners took a Wider Family Learning course, and 72,600 learners achieved.

Note that these figures include learners participating on more than one type of Adult Safeguarded Learning course.

University for Industry

29. In 2009/10, 153,800 learners were participating on a University for Industry course [Table 1], and 93,800 learners achieved a qualification.

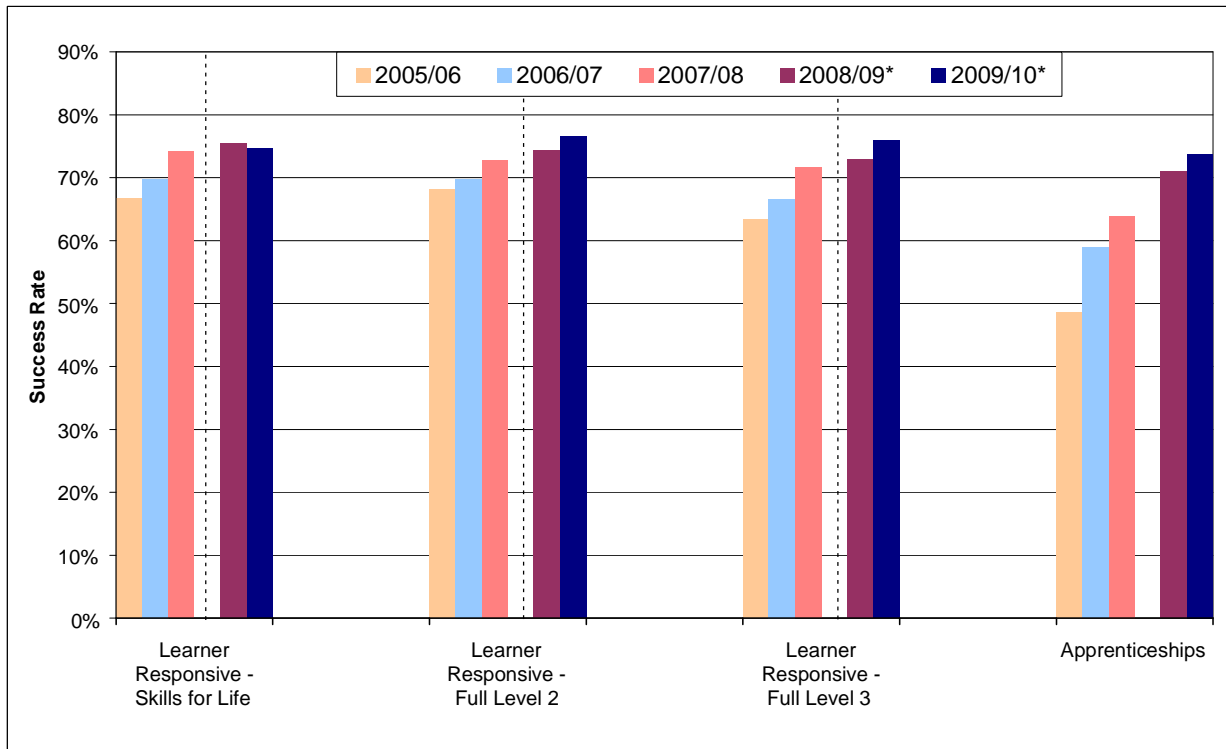
Success Rates

30. Success rates are calculated for individual qualifications. They show how many learners that started a qualification went on to successfully complete it. Success rates are typically calculated at a qualification level, but can be aggregated across different types of course, or for particular colleges or providers. Learner Responsive and Apprenticeship success rates are calculated on a slightly different basis. For more information please see:

<http://www.thedataservice.org.uk/datadictionary/technicaldefinitions/derivedvariables/0910/index+0910.htm>

31. Chart 7 shows that all age Learner Responsive success rates (excluding schools) have risen steadily between 2005/06 and 2009/10, across all qualification levels except for Skills for Life. Success rates for Apprenticeship frameworks have risen dramatically since 2005/06, increasing by over 25 percentage points to 73.8 per cent in 2009/10.

Chart 7: Government-funded Further Education Success Rates (excluding schools)



***Note: Learner Responsive Success Rates for 2008/09 onwards are not directly comparable with earlier years. See paragraph 59 onwards for more information.**

32. In 2009/10, success rates [Table 7.3] were:

- 74.7 per cent for Learner Responsive Skills for Life qualifications, a decrease of 0.8 percentage points compared to 2008/09;
- 80.0 per cent for Learner Responsive Level 2 qualifications, an increase of 0.4 percentage points compared to 2008/09 (76.5 per cent for full Level 2, an increase of 2.1 percentage points);
- 80.9 per cent for Learner Responsive Level 3 qualifications, the same level as 2008/09 (76.0 per cent for full Level 3, an increase of 3.0 percentage points);
- 73.8 per cent for all Apprenticeships, an increase of 2.9 percentage points compared to 2008/09;
- 73.4 per cent for Intermediate Level Apprenticeships, an increase of 3.0 percentage points compared to 2008/09;
- 74.8 per cent for Advanced Level Apprenticeships, an increase of 2.6 percentage points compared to 2008/09.

33. Information on Train to Gain Success Rates can be found here:

http://www.thedataservice.org.uk/statistics/statisticalfirstrelease/sfr_other_statistics/

HEADLINES FOR PROVISIONAL DATA FOR FULL 2010/11 ACADEMIC YEAR

34. Data for 2010/11 provide an early view of performance for the full academic year (August 2010 to July 2011). Data are provisional because providers may not have reported all their information relating to this period. It is not possible to determine how incomplete the information behind the in-year data is, so the data cannot be compared against provisional or final data from earlier academic years. Comparisons can only be made once final returns for the academic year are made by providers (as published each January).

Learner Participation

35. Provisional data show that between August 2010 and July 2011 there were 4,224,900 learners participating in government-funded further education (excluding schools) [Table 17]. Of these:
- 1,095,700 were aged under 19 [Table 15];
 - 3,129,200 were aged 19 and over [Table 16].
 - 1,463,700 learners participated on a Skills for Life course [Table 17];
 - 1,802,100 learners participated on a Level 2 course, of which 1,301,000 were on a full Level 2 course [Table 17];
 - 1,055,900 learners participated on a Level 3 course, of which 912,600 were on a full Level 3 course [Table 17];
 - 685,800 learners participated on an Adult Safeguarded Learning course [Table 23].

Apprenticeships

36. Provisional data show that there were 442,700 Apprenticeship starts in the full 2010/11 academic year (August 2010 to July 2011) [Table 18.1]. Of these there were:
- 292,700 Intermediate Level Apprenticeship starts;
 - 147,900 Advanced Level Apprenticeship starts; and
 - 2,100 Higher Apprenticeship starts.
 - Learners aged under 19 started 128,300 Apprenticeship frameworks;
 - Learners aged 19–24 started 138,900 Apprenticeship frameworks; and
 - Learners aged 25 and over started 175,500 Apprenticeship frameworks.
37. Provisional data show that there were 181,700 Apprenticeship framework achievements in the full 2010/11 academic year (August 2010 to July 2011) [Table 18.2]. Of these there were:
- 119,700 Intermediate Level Apprenticeship achievements;
 - 61,100 Advanced Level Apprenticeship achievements; and
 - 900 Higher Apprenticeship achievements.

- Learners aged under 19 achieved 74,400 Apprenticeship frameworks;
- Learners aged 19–24 achieved 71,000 Apprenticeship frameworks;
- Learners aged 25 and over achieved 36,300 Apprenticeship frameworks.

38. In May 2010, the Department for Business, Innovation and Skills announced that it would fund 50,000 new adult (aged 19 and over) Apprenticeship starts in the 2010-11 financial year (running from April 2010 to March 2011). The Statistical First Release presents academic year statistics, but the underlying data can be used to calculate financial year statistics. In the June SFR the provisional data for Apprenticeships showed that the department had achieved the ambition of 50,000 additional adult Apprenticeship starts over the 2010-11 financial year (or 203,200 in total), by delivering 257,000 adult Apprenticeship starts. The latest provisional data re-affirm that the department met the ambition; the updated estimate is that 256,100 adult Apprenticeships starts were delivered during the 2010-11 financial year. Final data covering this period will be reported in the January 2012 SFR.

Workplace Learning

39. Provisional data show that there were 444,700 Workplace Learning starts in the full 2010/11 academic year (August 2010 to July 2011) [Table 19.1].
40. Provisional data show that there were 412,500 Workplace Learning achievements in the full 2010/11 academic year (August 2010 to July 2011) [Table 19.2].

CHANGES INCLUDED IN THIS SFR

41. None.

CHANGES IN THE NEXT SFR

42. The January SFR will include final 2010/11 data and will include provisional data for the first quarter of 2011/12.

43. From the 2011/12 academic year a Single Individualised Learner Record data collection system has been introduced. This has replaced the multiple separate data collections from previous years and has led to small technical changes in the way learners from more than one funding stream are counted. Before the January SFR a paper will be made available on our website to explain the Single ILR and the small effects it will have on the SFR. Further information on the Single ILR is available on the Information Authority's website at:
<http://www.theia.org.uk/ilr/singleilr/>

44. Ofqual Vocational Qualification data shown in Table 14 of this release, and accompanying supplementary tables were updated on the 29th November as part of a formal cascade of this release. These tables were updated to include data for the fourth quarter of 2010/11 (July to September 2011) which will allow Ofqual to update their detailed bulletins that include these data.

45. Changes to the next release will be pre-announced on the Data Service website at least a month prior to coming into effect, at:
http://www.thedataservice.org.uk/statistics/statisticalfirstrelease/sfr_next/

SUPPORTING DATA

Scope

46. Should we need to make an unplanned revision to the statistics contained in this release, we will follow the procedures outlined in the Revisions Policy for this Statistical first Release. This includes action to understand the impact that any revisions will have, as well as ensuring that they are clearly communicated to the reader. The Revisions Policy can be found at:
<http://www.thedataservice.org.uk/statistics/statisticalfirstrelease/compliance/>

47. Information from the different post-16 learning options have been drawn together to give a coherent and comprehensive picture of the participation and achievement of young people and adults after the age of 16. These options include:

- Further education organisations
- Sixth form colleges
- Local Authorities
- Independent training organisations.

48. These organisations deliver a wide variety of government programmes, including:

- College-based Learning
- Apprenticeships
- Workplace Learning
- University for Industry
- Adult Safeguarded Learning.

49. This SFR does not contain information regarding:

- **Delivery in School Sixth Forms**, including maintained, independent and academy schools. We are hoping to include this in future editions of the SFR, once more work has been done to reconcile the different data sources. Figures taken from the Department for Education (DfE) Participation in Education, Training and Employment by 16–18 Year Olds in England Statistical Release show there were 507,300 students studying in School Sixth Forms in 2008/09, based on a snapshot of January 2009 census data.
- **Higher education in Higher Education Institutions**. The publication referenced in paragraph 75 shows that the total number of HE enrolments at English Higher Education Institutions stood at 2,093,635 in 2009/10.
- **Privately-funded training at FE organisations/ independent training organisations**. There is no single coherent source that provides a measure of privately-funded training. BIS will investigate whether it is possible to develop a measure to support this, as part of our wider Dissemination Plan. More detail on the Dissemination Plan, which will be updated by the end of 2011, can be found at: http://www.thedataservice.org.uk/statistics/dissemination_plan/. There are no sources currently available that fully capture privately-funded academic activity, particularly for older learners. However, in Table 14 of this release we do show the total number of Vocational Qualifications awarded in the UK. This includes both public and privately-funded qualifications, and gives some sense of scale of total vocationally-related activity in the sector.

Data Sources

50. The data used to produce this SFR are Individualised Learner Record (ILR) collections that are returned to the Data Service by further education colleges and providers. The following ILR collections have been used to populate this release:

Year	Data Source
2009/10	LR ILR L05 – final
	ER ILR E13 – final
	ASL ILR C05 – final
	Ufl ILR U05 – final
2010/11	LR ILR LR04 – final
	ER ILR ER12 – 05/08/11
	ASL ILR SL04 – final

51. For 2010/11, LR04 provides provisional full year data on learning in Learner Responsive providers for the period 1st August 2010 to 31st July 2011. SL04 is a similar collection of Adult Safeguarded Learning provision and ER12 is a provisional record of Employer Responsive provision.
52. The data sources for earlier years, including 2009/10, are the final collections of each funding stream and include information on provision for the full academic year. More information on these data sources is available in the definitions document.
53. The Labour Force Survey is the other data source used for the SFR (Tables 12 and 13). The latest LFS data used in this release relate to Quarter 4 (October – December) 2010.

Issues with Using Provisional Data

54. It is important to provide the earliest picture of further education performance once it becomes available so that users may assess the impact of government-funded provision and hold the system to account. However, provisional data are taken from an operational information system which is designed to support the funding of providers and there are some important limitations users should take into consideration.
55. In-year information is subject to data lag, which is when a provider submits information after the period it related to. This information is subsequently attributed to the correct time period. Data remain provisional until final returns for the academic year are made by providers, after the end of the academic year. Final data are published in the following January. The size of revision to individual estimates that arise from data lag can vary greatly. They tend to be around 2 to 3 per cent but have been as much as 15 per cent. Revisions are typically moderate upward revisions though it should be noted that on occasions small downward revisions are possible.
56. Data lag from one year to the next is not predictable, as provider behaviour changes over time and there is no source of information that would enable us to provide a robust estimate of completeness of data that has been returned. Provisional data cannot, therefore, be compared with provisional or final data from earlier academic years. We generally recommend using the final data for the last complete academic year.
57. If as part of our quality assessment of the volume of providers that have made their returns we consider estimates to be particularly weak, be that from the impact of data lag or any other factor, we may defer publication of those estimates. This is set out in our quality statement, which can be found at:
<http://www.thedataservice.org.uk/statistics/statisticalfirstrelease/compliance/>.
58. In recent years we have encouraged more timely reporting of data ahead of the final return and we do have some evidence to show that data has been reported more timely in the first six months of 2010/11.

Issues with Comparing Data Across Academic Years

59. In January 2007, BIS consulted on a new funding approach for learners. This included three new demand led funding (DLF) models and a new funding formula, all of which were introduced in the 2008/09 academic year.

60. To support this, it was necessary to bring in some technical changes from 2008/09 to how and where some activities are counted. Table A shows the effect the new funding approach had on how and where we count learners.

61. Table A shows that overall the new funding methodology had a small impact of just over 1 per cent on total learner participation, and minimal effect on overall achievements. However, individual series (excluding Apprenticeship starts and achievements) were more significantly affected, and should not be compared with those in earlier years. The level of provision at which a learner is studying was unaffected. More information on these changes can be found at:

<http://www.thedataservice.org.uk/NR/rdonlyres/5DC702AA-5117-40E1-A15E-01F95F2AF32B/0/TheeffectsofDemandLedFundingonthecountof2008v2.doc>

Table A: Learner Numbers in 2007/08 Under the Previous and Current Funding Models

	Funding Stream (As at 2007/08)	2007/08 Funded Learners			
		Original Learner Numbers	Learner Numbers Under the New Funding Methodology	Difference	Change
Participation	Total Learners	4,360,700	4,417,000	56,200	1.3%
	of which Further Education (FE)	2,464,100	2,328,400	-135,700	-5.5%
	of which University for Industry (Ufi)	216,300	216,300	No Change	No Change
	of which Adult Community Learning (ACL)	725,400	824,500	99,000	13.7%
	of which Work-based Learning (WBL - includes Apprenticeships)	495,700	411,600	-84,100	-17.0%
	of which Train to Gain (TtG)	459,200	694,800	235,500	51.3%
Achievement	Total Learners	2,960,900	2,966,200	5,200	0.2%
	of which Further Education (FE)	1,896,800	1,777,200	-119,700	-6.3%
	of which University for Industry (Ufi)	116,100	116,100	No Change	No Change
	of which Adult Community Learning (ACL)	620,000	688,400	68,400	11.0%
	of which Work-based Learning (WBL - includes Apprenticeships)	141,600	112,500	-29,000	-20.5%
	of which Train to Gain (TtG)	186,500	304,000	117,500	63.0%

Notes

- Figures have been rounded to the nearest hundred; percentages are calculated based on pre-rounded data.
- Original Learner Numbers are the actual volume of funded learners in each funding stream in 2007/08. The New Funding Methodology totals are the modelled volumes of learners that would have been funded under demand led funding.
- In the new funding methodology, the FE totals do not include learners on Adult Safeguarded Learning (ASL) provision or learners studying NVQs in the workplace. Entry to Employment learners originally counted in the WBL funding stream have been added to the FE totals.
- In the new funding methodology, the ACL totals include all learners originally counted in the ACL collection and learners on ASL programmes originally counted in the FE collection.
- In the new funding methodology, the WBL totals only include all learners on Apprenticeship programmes. All other provision originally counted in the WBL collection is now counted in the FE totals and TtG totals.
- In the new funding methodology, the TtG totals include all learners originally counted in the TtG collection, as well as learners studying NVQs in the workplace that were originally counted in the FE collection and learners studying NVQs from the WBL collection that were not part of Apprenticeship programmes.

Data Definitions

62. High-level definitions of some of the key terms used in this release can be found in the Glossary on page 4. A more detailed definitions document to accompany this release is available on the Data Service website at:

http://www.thedataservice.org.uk/statistics/statisticalfirstrelease/sfr_current/

63. The 'Level of Highest Qualification Held by Adults' statistics are produced using data on the highest qualification held by individuals from the Labour Force Survey in each year. The LFS is conducted by the Office for National Statistics and the estimates provided are the best measure of attainment within the population at Quarter 4 (October – December) each calendar year. Further details of how this information is used to calculate the estimates can be found at:

<http://www.thedataservice.org.uk/statistics/statisticalfirstrelease/methodogy/>

64. From 2004 onwards, statistics relating to changes in attainment of 19 year olds at Level 2 and monitoring progress towards young people's attainment targets are based on a new administrative data source published by the Department for Education. For more information, see the release listed in paragraph 74.

Publication Cycle Across the Year

65. Further information on the publication dates for future editions of the SFR can be found on the BIS statistics home page at: <http://stats.bis.gov.uk/>

66. Table B below shows provisional and final data included for each quarterly release.

Table B: Publication Cycle

Release	Data Included
March 2011	- Provisional in-year Learner Responsive participation data for the first six months of 2010/11
	- Provisional in-year Employer Responsive data for the first six months of 2010/11
	- Final data on the level of highest qualification held for adults in the population in 2010
June 2011	- Provisional in-year Learner Responsive participation data for the first nine months of 2010/11
	- Provisional in-year Employer Responsive data for the first nine months of 2010/11
October 2011	- Provisional in-year Learner Responsive participation data for all of 2010/11
	- Provisional in-year Employer Responsive data for all of 2010/11
January 2012	- Final Learner and Employer Responsive participation and achievement data for 2010/11
	- Further Education and Apprenticeship success rates for 2010/11
	- Provisional Apprenticeship, Workplace Learning and overall FE and Skills data for the first quarter of 2011/12

67. The Statistical First Release is an evolving product, and we welcome feedback. If you have comments or feedback on the SFR, these can be sent to: servicedesk@thedataservice.org.uk, or alternatively, you can call 0870 267 0001.

68. If you have a statistical question around the content or presentation of National Statistics in the release, please contact Jessie Evans at: Jessie.Evans@bis.gsi.gov.uk

69. If you would like to sign up for Web alerts, so that you are automatically sent an alert when new information is put on the website, please subscribe at:
http://www.thedataservice.org.uk/News/ds_alerts/

Supplementary Tables

70. A full list of supplementary tables relating to this SFR can be found on the Data Service website at:
http://www.thedataservice.org.uk/statistics/statisticalfirstrelease/sfr_supplementary_tables/. These tables include breakdowns by age, gender, ethnicity, learners with learning difficulties and/or disabilities and/or health problems, region, local authority, parliamentary constituency, sector subject area and funding stream. For more information on exactly what data will be released, and on which date, please see the supplementary tables list on the website.
71. The Data Service has published a related research report on Science, Technology, Engineering and Mathematics (STEM) in the further education sector (October 2010). This research report is available on the Data Service website at:
http://www.thedataservice.org.uk/statistics/other_statistics_and_research/. The next STEM research report will be available online from 17th November 2011.

Related National Statistics Releases

72. There are a number of other National Statistics publications available that can be used to provide contextual information to this SFR. Some of those most relevant to this release are discussed below.
73. [*Participation in Education, Training and Employment by 16-18 Year Olds in England*](#) published on 30th June 2011 by the Department for Education. This shows that the proportion of 16–18 year olds in education and training was 84.4 per cent at end 2010 – the highest rate ever recorded and an increase of 2.0 percentage points from 82.5 per cent at end 2009. The total number of 16–18 year olds in education and training increased by 1,600 to 1.64 million at end 2010.
74. [*Level 2 and 3 Attainment by Young People in England Measured Using Matched Administrative Data: Attainment by Age 19 in 2010*](#) published on 31st March 2011 by the Department for Education. This shows that in 2010, 81.5 per cent of people aged 19 were qualified to at least Level 2, and 54.2 per cent were qualified to Level 3. These were increases of 2.4 percentage points and 2.5 percentage points respectively, since 2009.
75. [*Higher Education Student Enrolments and Qualifications Obtained at Higher Education Institutions in the United Kingdom for the Academic Year 2009/10*](#) published on 13th January 2011 by the Higher Education Statistics Agency. This release shows that the total number of HE enrolments at English Higher Education Institutions stood at 2,093,635 in 2009/10, an increase of 4 per cent from 2008/09. In terms of qualifications, in 2009/10 there were 292,410 first degree graduates – a 6 per cent increase from 2008/09.

76. [*Education and Training Statistics for the United Kingdom*](#) published on 31st March 2011 by the Department for Education. This release provides statistics relating to education and training in the UK and includes chapters relating to post-compulsory education & training and qualifications. Information includes participation of learners in further education by country of study, participation in job-related training and the highest level of qualification held by adults in the population (UK).

Other Related Statistics

77. In December 2010 the Government published comparable information gathered through the Framework for Excellence on the quality and outcomes of further education provision. This information includes the views of learners and employers on the quality of the learning and training they have received; including attainment of learning aims, and progression into further and higher learning and employment. These indicators are published on the Framework for Excellence website at: <http://ffe.skillsfundingagency.bis.gov.uk>

78. In December 2010, Local Authority reports were published on the Data Service website (and updated in June 2011). Local Authorities are shown based on the postcodes of delivery locations and also on the home postcodes of learners. The reports cover enrolments, starts and achievements by sector, and enrolments and achievements by provider, for 2008/09 and 2009/10. These tables can be found at: http://mireportslibrary.thedataservice.org.uk/demographics/geography_reports/local_authority.htm

Further Education Statistics for Other Countries in the UK

79. The focus of this SFR is on government-funded further education provision in England. Similar information is available for other countries in the UK, and provides useful contextual background to these statistics.

80. Statistics on Further Education and Work-based learning in **Wales** can be found at: <http://wales.gov.uk/topics/statistics/headlines/post16education2011/1105121/?lang=en>

81. Statistics on Professional and Technical Enrolments in the **Northern Ireland** Further Education Sector for 2007/08 and 2008/09 can be found at: <http://www.delni.gov.uk/index/statsandresearch/further-education-stats/further-education-enrolments-2/prof-and-tech-enrolments-in-the-ni-fe-sector-09-10.htm>

82. Facts and figures on learners in further education in **Scotland** can be found at: http://www.sfc.ac.uk/web/FILES/ReportsandPublications/Facts_and_Figures_2010.pdf Additionally, user-defined tables on further education learners and courses can be produced at: <https://stats.sfc.ac.uk/infact/>

TABLE GUIDE

83. This section provides a brief summary of what is included in each table of this release. Tables 1 to 14 focus on the 2009/10 academic year; Tables 15 to 23 show provisional data for the full 2010/11 academic year (August 2010 – July 2011).

- **Table 1** shows a demographic breakdown of all government-funded learners in further education.
- **Tables 2, 7 and 10** show respectively, adult (aged 19 and over), all ages, and young people (aged under 19) participation and achievement in further education by level.
- **Tables 3 and 8** show Apprenticeship starts and achievements by level for adult (aged 19 and over) and all ages, respectively.
- **Tables 4, 9 and 11** show Skills for Life participation and achievement for adult (aged 19 and over), all ages, and young people (aged under 19) respectively.
- **Table 5** shows starts and achievements for the Train to Gain programme.
- **Table 6** shows participation and achievements in Adult Safeguarded Learning.
- **Tables 12 and 13** show level of attainment in the population (working age and economically active respectively) from the Labour Force Survey.
- **Table 14** shows a quarterly time series of information on Vocational Qualifications awarded.
- **Tables 15 to 23** repeat earlier tables; showing provisional in-year participation for the full 2010/11 academic year (August 2010 – July 2011).

Supplementary Tables

84. A full list of supplementary tables relating to this SFR can be found on the Data Service website at:

http://www.thedataservice.org.uk/statistics/statisticalfirstrelease/sfr_supplementary_tables/. These tables include breakdowns by age, gender, ethnicity, learners with learning difficulties and/or disabilities and/or health problems, region, local authority, parliamentary constituency, sector subject area and funding stream.

Table Footnotes

General Footnotes Relevant to All Tables

- 1) Volumes are rounded to the nearest hundred; percentages are calculated on pre-rounded data.
- 2) '-' Indicates a base value of less than fifty or a percentage of less than 0.5%.
- 3) These tables (except 12-14) include learners that were funded by the Learning and Skills Council and/or are now funded by the Skills Funding Agency or Young People's Learning Agency.
- 4) For definitions of variables used in the tables please see the data dictionary - <http://www.thedataservice.org.uk/datadictionary/>
- 5) Except for Tables 3, 8 and 18, age is reported as at 31 August of the academic year for all provision. Where under 19 year olds are covered, these include a small number of under 16 year olds.
- 6) In tables reporting full-year numbers, except for Tables 3, 5, 8, 18 and 19, full-year numbers are a count of the number of learners that participated/achieved at any point during the year. Learners undertaking/achieving more than one course will appear only once in the 'total learners' category for each data collection. However, learners that are included in different data collections, whether that relates to different years or different funding streams, will be counted more than once. All learners undertaking/achieving a full Level 2 or full Level 3 qualification will also appear in the Level 2 or Level 3 category, respectively.
- 7) The data source for all tables is the Individualised Learner Record, except where stated.
- 8) Further breakdowns of the data are available at the Data Service website: http://www.thedataservice.org.uk/statistics/statisticalfirstrelease/sfr_supplementary_tables/

Table 1 – FE and Skills Demographics

- 9) Total Learner Responsive also includes learners on courses with 'No Level Assigned'. Learners undertaking courses at more than one level will be counted once for each applicable level, but once only in Total Learner Responsive. Learners studying a Level 2 Skills for Life qualification will be counted in both the Level 2 and Skills for Life categories, but only once in totals.
- 10) Learners on Higher Apprenticeships are not shown separately, but are included in the 'Total Apprenticeships' column. Other Employer Responsive provision that is not Apprenticeships or Train to Gain is not shown separately, but is included in the 'Total' column of this table.
- 11) Age, gender, learners with learning difficulties and/or disabilities and ethnicity is based upon self-declaration by the learner.

Tables 2,7,10 and 15-17 – FE and Skills

- 12) Success rates are calculated as the number of learning aims achieved divided by the number of learning aims expected to complete, excluding any learners who transferred on to another learning aim within the same institution.
- 13) Apprenticeship success rates are based on the number of learners who meet all of the requirements of their Apprenticeship framework, divided by the number of learners who have left training or successfully completed their training in the academic year.
- 14) Apprenticeship success rates are not affected by demand led funding.
- 15) Tables 2.2, 7.2 and 10.2 report on the actual number of achievements within the academic year without reference to those which were expected to complete. Table 2.3, 7.3 and 10.3 report on success rates which are based on the reported achievement of individual aims that were expected to complete in the academic year.
- 16) FE and Skills participation figures for 2010/11 are available in tables 15-17 of this release.
- 17) Tables that show provisional estimates for 2010/11 are not directly comparable with figures for previous years.

Tables 3, 8 and 18 – Apprenticeships

- 18) Unlike learner figures in earlier tables, figures for 2008/09 onwards are comparable with earlier years as demand led funding rules are not applied to starts and achievements.
- 19) Age is calculated based on age at start of the programme rather than based on 31 August.
- 20) In Tables 3.1, 8.1 and 18.1 full-year numbers are a count of the number of starts at any point during the year. Learners starting more than one framework will appear more than once.
- 21) In Tables 3.2, 8.2 and 18.2 full-year numbers are a count of the number of framework achievements at any point during the year. Learners achieving more than one framework will appear more than once.
- 22) Programme-Led Apprenticeships recorded in WBL ILR returns are included in the above figures.
- 23) In order to be counted as a successful achievement, all elements of the framework must have been achieved.
- 24) Quarter 1 - 1 August to 31 October; Quarter 2 - 1 November to 31 January; Quarter 3 - 1 February to 30 April; Quarter 4 - 1 May to 31 July.

Tables 5 and 19 – Train to Gain/Workplace Learning

- 25) Figures for 2008/09 and 2009/10 are not comparable with earlier years as in 2008/09 and 2009/10 NVQs delivered in the workplace changed from being funded by FE to be funded by Train to Gain. There were 181,000 starts and 132,000 achievements in NVQs delivered in the workplace in 2007/08 (Source - FE 2007/08 F05 Final).

- 26)** In Tables 5.1 and 19.1 full-year numbers are a count of the number of starts at any point during the year. Learners starting more than one course will appear more than once.
- 27)** In Tables 5.2 and 19.2 full-year numbers are a count of the number of achievements at any point during the year. Learners achieving more than one course will appear more than once.
- 28)** 'Other Level 2' and 'Other Level 3' qualifications include learners starting Train to Gain courses accessed through new funding flexibilities. These include thin Level 2 and Level 3, and Level 2 and Level 3 units, for 2008/09 onwards. These were made available from January 2009.
- 29)** Table 5.2 includes Employer Training Pilot data for April to July 2006 and full year 2006/07.
- 30)** Quarter 1 - 1 August to 31 October; Quarter 2 - 1 November to 31 January; Quarter 3 - 1 February to 30 April; Quarter 4 - 1 May to 31 July.

Tables 6 and 23 – Adult Safeguarded Learning

- 31)** Total Learners includes learners participating in ASL provision in the ACL and FE funding streams for 2005/06 to 2007/08. For 2008/09 onwards, only ASL provision recorded in the ASL collection is included in totals except for 2009/10 where ASL provision recorded in the LR collection for five Specially Designated colleges is also included. No Formal First Step learners are included except for 2006/07, where Formal First Step provision cannot be accurately separated from other ACL provision. These learners are therefore included in Total Learners. This means the Total Learners for 2006/07 are not directly comparable to 2005/06 or 2007/08.
- 32)** Provision type figures are only shown for years where provision type can be accurately determined for all learners. ACL learners in 2005/06 cannot be accurately categorised.
- 33)** There were 7,900 participating and 6,400 achieving learners with ASL aims in the 2008/09 and 7,700 participating and 6,300 achieving learners with ASL aims in the 2009/10 Learner Responsive funding stream that are not included in these figures in Table 7. The only ASL provision included for 2008/09 is recorded in the ASL funding stream.
- 34)** ASL participation figures for 2010/11 are available in Table 23 of this release.
- 35)** There were 5,600 participating learners with ASL aims in the 2010/11 Learner Responsive funding stream that are not included in these figures in Table 23. The only ASL provision included for 2010/11 is recorded in the ASL funding stream.

Table 14 – Vocational Qualifications

- 36)** This table covers all levels of vocational qualifications reported through Ofqual. Data are supplied by awarding organisations.
- 37)** Academic year is October to September. For example, the 2005/06 academic year is 1 October 2005 to 30 September 2006.
- 38)** Key Skills data was not collected prior to October 2009.
- 39)** 'Other Vocational Qualifications' includes Basic Skills, Entry Level, English for Speakers Other Languages, Functional Skills, Free-Standing Mathematics Qualification, Key Skills, National Qualifications Framework and Other General types.

Table 1: All Age Demographic Summary of FE and Skills Participation by Funding Stream and Level (2009/10) – Learner Volumes

	Funded Learners																		
	Apprenticeships				Learner Responsive (LR)							University for Industry (UFI)		Train to Gain (TTG)		Adult Safeguarded Learning (ASL)			
	Intermediate Level Apprenticeship	Advanced Level Apprenticeship	Total Apprenticeships	%	Below Level 2 (excluding SFL)	Skills For Life (SFL)	Level 2	Level 3	Level 4+	Total LR	%	Total UFI	%	Total TTG	%	Total ASL	%	Total	%
Total Learners	304,000	185,500	491,300	100.0%	676,700	847,400	987,700	742,600	35,900	2,247,400	100.0%	153,800	100.0%	846,900	100.0%	762,400	100.0%	4,635,500	100.0%
Age																			
Under 19	140,400	45,800	186,400	37.9%	308,400	411,100	450,300	464,300	1,000	891,800	39.7%	3,400	2.2%	-	-	4,800	0.6%	1,095,000	23.6%
19-24	114,600	94,900	210,900	42.9%	87,000	119,300	139,500	97,800	5,500	316,400	14.1%	29,200	19.0%	127,800	15.1%	55,200	7.2%	770,600	16.6%
25-49	44,000	40,900	85,000	17.3%	200,700	273,100	314,200	144,300	24,500	797,400	35.5%	99,500	64.7%	572,400	67.6%	395,700	51.9%	2,026,100	43.7%
50+	5,000	3,900	8,900	1.8%	79,000	42,900	82,500	35,300	5,000	237,300	10.6%	21,600	14.0%	146,700	17.3%	293,800	38.5%	726,400	15.7%
Unknown	-	-	-		1,500	900	1,100	900	-	4,400	-	-	-	-	-	12,900	1.7%	17,300	-
Gender																			
Female	148,600	80,800	230,300	46.9%	312,600	444,000	536,300	418,200	23,100	1,214,300	54.0%	71,300	46.4%	418,000	49.4%	570,200	74.8%	2,546,200	54.9%
Male	155,400	104,800	261,000	53.1%	364,000	403,400	451,400	324,400	12,900	1,033,100	46.0%	82,500	53.6%	428,800	50.6%	192,200	25.2%	2,089,300	45.1%
Learners with Learning Difficulties and/or Disabilities																			
Learning Difficulty	33,500	14,000	47,600	9.7%	146,000	161,200	132,600	86,300	2,400	349,300	15.5%	16,800	10.9%	44,400	5.2%	87,400	11.5%	560,900	12.1%
No Learning Difficulty	267,500	170,300	439,500	89.5%	487,300	638,400	800,700	623,700	31,700	1,760,900	78.4%	136,100	88.5%	786,200	92.8%	582,100	76.4%	3,818,100	82.4%
Not Known	3,000	1,200	4,100	0.8%	43,300	47,700	54,400	32,600	1,900	137,200	6.1%	900	0.6%	16,300	1.9%	92,900	12.2%	256,600	5.5%
Ethnicity																			
White	278,500	172,500	452,700	92.1%	523,700	582,500	791,700	599,700	31,200	1,719,700	76.5%	117,800	76.6%	716,400	84.6%	615,700	80.8%	3,716,800	80.2%
Mixed	5,200	2,600	7,900	1.6%	19,900	26,200	27,100	21,900	500	61,600	2.7%	3,400	2.2%	9,800	1.2%	10,100	1.3%	96,000	2.1%
Asian or Asian British	9,100	4,900	14,100	2.9%	48,200	101,800	67,500	53,400	1,600	188,000	8.4%	12,900	8.4%	57,300	6.8%	54,200	7.1%	339,600	7.3%
Black or Black British	6,600	3,400	10,000	2.0%	47,800	77,100	61,900	44,900	1,400	157,300	7.0%	15,200	9.9%	38,700	4.6%	31,200	4.1%	266,300	5.7%
Chinese or Other Ethnic Group	1,700	900	2,700	0.5%	16,600	41,000	20,200	12,200	600	65,800	2.9%	3,300	2.1%	12,600	1.5%	19,900	2.6%	109,700	2.4%
Not Known/Not Provided	2,800	1,100	3,900	0.8%	20,500	18,800	19,200	10,500	700	54,800	2.4%	1,200	0.8%	12,100	1.4%	31,400	4.1%	107,100	2.3%

Notes

1) These tables include Apprenticeships, Train to Gain, University for Industry, Adult Safeguarded Learning and Further Education/Learner Responsive Provision taken at General Further Education Colleges including Tertiary, Sixth Form Colleges, Special Colleges (Agricultural and Horticultural Colleges and Art and Design Colleges), Specialist Colleges and External Institutions.

2) Please see the general footnotes and the FE and Skills Demographics footnotes sections for further information on these tables.

Table 2.1: Adult (19+) FE and Skills Participation by Level (2005/06 to 2009/10) – Learner Volumes

		Funded Learners								
		2005/06		2006/07		2007/08		2008/09		2009/10
				% change		% change				% change
		05/06 to		06/07		06/07 to		08/09 to		09/10
		Full Year		Full Year		Full Year		Full Year		Full Year
Level										
Total Learners		3,996,000	3,205,700	-19.8%	3,304,400	3.1%	3,771,200	3,540,500	-6.1%	
Participation	of which...									
	Below Level 2 (excluding Skills for Life)	1,031,800	589,500	-42.9%	532,500	-9.7%	496,800	435,300	-12.4%	
	Skills for Life	980,000	809,300	-17.4%	824,800	1.9%	945,100	909,100	-3.8%	
	Full Level 2	451,600	516,300	14.3%	740,000	43.3%	968,600	971,000	-	
	Full Level 3	265,600	267,600	0.7%	328,100	22.6%	423,900	469,100	10.6%	
	Level 2	1,245,500	1,118,400	-10.2%	1,319,400	18.0%	1,549,000	1,451,200	-6.3%	
	Level 3	526,300	485,800	-7.7%	528,200	8.7%	619,700	604,800	-2.4%	
	Level 4+	68,300	59,900	-12.2%	53,200	-11.1%	58,200	49,500	-14.9%	
No Level Assigned	1,050,400	842,300	-19.8%	803,600	-4.6%	910,500	951,100	4.5%		

Table 2.2: Adult (19+) FE and Skills Achievement by Level (2005/06 to 2009/10) – Learner Volumes

		Funded Learners								
		2005/06		2006/07		2007/08		2008/09		2009/10
				% change		% change				% change
		05/06 to		06/07		06/07 to		08/09 to		09/10
		Full Year		Full Year		Full Year		Full Year		Full Year
Level										
Total Learners		2,931,400	2,233,100	-23.8%	2,243,600	-	2,584,000	2,567,700	-0.6%	
Achievement	of which...									
	Below Level 2 (excluding Skills for Life)	758,100	430,200	-43.2%	406,500	-5.5%	367,000	336,800	-8.2%	
	Skills for Life	737,800	540,900	-26.7%	520,700	-3.7%	639,100	614,600	-3.8%	
	Full Level 2	216,500	235,600	8.8%	320,300	35.9%	493,900	556,000	12.6%	
	Full Level 3	110,000	115,000	4.6%	134,400	16.9%	170,200	237,800	39.7%	
	Level 2	759,200	660,600	-13.0%	734,700	11.2%	910,800	926,000	1.7%	
	Level 3	285,600	271,400	-5.0%	285,600	5.2%	317,000	344,400	8.7%	
	Level 4+	33,100	30,300	-8.4%	25,800	-14.9%	27,600	26,900	-2.3%	
No Level Assigned	866,600	689,700	-20.4%	682,800	-1.0%	756,400	814,600	7.7%		

Table 2.3: Adult (19+) FE and Apprenticeship Success Rates by Level (2005/06 to 2009/10) – Percentages

		2005/06	2006/07	2007/08	2008/09	2009/10
		Full Year	Full Year	Full Year	Full Year	Full Year
Total Further Education/Learner Responsive Provision		76.8%	76.5%	80.5%	80.6%	80.3%
of which...	Skills for Life	65.3%	67.9%	73.1%	75.1%	74.3%
	Full Level 2	68.3%	69.4%	71.4%	72.1%	74.8%
	Full Level 3	62.0%	65.5%	70.6%	70.1%	75.1%
	Level 2	74.2%	75.6%	79.6%	80.5%	80.3%
	Level 3	68.6%	72.0%	77.1%	78.4%	78.7%
Apprenticeships	of which...					
	Intermediate Level Apprenticeship	50.9%	60.1%	64.8%	72.8%	75.6%
	Advanced Level Apprenticeship	41.4%	56.0%	64.5%	71.2%	74.0%
	All	46.9%	58.5%	64.7%	72.2%	75.0%

Notes

1) These tables include Apprenticeships, Train to Gain, University for Industry, Adult Safeguarded Learning and Further Education/Learner Responsive Provision taken at General Further Education Colleges including Tertiary, Sixth Form Colleges, Special Colleges (Agricultural and Horticultural Colleges and Art and Design Colleges), Specialist Colleges and External Institutions.

2) Figures for 2008/09 onwards are not directly comparable to earlier years as the introduction of demand led funding has changed how data is collected and how funded learners are defined from 2008/09 onwards. More information on demand led funding is available at <http://www.thedataservice.org.uk/datadictionary/businessdefinitions/Demand+Led+Funding.htm>. Apprenticeship success rates are not affected by demand led funding.

3) Please see the general footnotes and the FE and Skills footnotes sections for further information on these tables.

Table 3.1: Adult (19+) Apprenticeship Programme Starts by Level and Age (2005/06 to 2009/10)

	Age	2005/06	2006/07	2007/08	2008/09	2009/10	2008/09				2009/10			
		Full Year	Full Year	Full Year	Full Year	Full Year	Quarter 1	Quarter 2	Quarter 3	Quarter 4	Quarter 1	Quarter 2	Quarter 3	Quarter 4
Intermediate Level Apprenticeship	19-24	45,600	46,500	55,200	52,600	72,800	18,000	12,000	12,800	9,800	20,100	16,200	17,200	19,300
	25+	100	100	14,600	31,700	28,400	9,900	8,700	8,500	4,600	7,600	5,400	8,100	7,200
	Total	45,700	46,600	69,800	84,300	101,100	27,900	20,700	21,300	14,400	27,700	21,600	25,300	26,500
Advanced Level Apprenticeship	19-24	29,500	32,000	34,800	32,000	39,800	13,400	6,500	6,700	5,400	14,900	7,000	8,700	9,200
	25+	200	100	12,600	24,200	20,600	8,400	6,100	6,100	3,500	5,800	3,300	6,100	5,500
	Total	29,700	32,100	47,400	56,100	60,400	21,900	12,600	12,800	8,800	20,600	10,300	14,800	14,700
Higher Apprenticeship	19-24	-	100	-	100	1,200	-	-	-	100	600	200	300	100
	25+	-	-	-	-	100	-	-	-	-	100	-	-	-
	Total	-	100	-	100	1,400	-	-	-	100	700	300	300	100
All Apprenticeships	19-24	75,200	78,600	90,100	84,700	113,800	31,500	18,500	19,500	15,200	35,600	23,400	26,100	28,600
	25+	300	300	27,200	55,900	49,100	18,300	14,900	14,600	8,100	13,400	8,700	14,200	12,800
	Total	75,500	78,800	117,200	140,600	162,900	49,800	33,400	34,100	23,300	49,000	32,100	40,400	41,400

Table 3.2: Adult (19+) Apprenticeship Framework Achievements by Level and Age (2005/06 to 2009/10)

	Age	2005/06	2006/07	2007/08	2008/09	2009/10	2008/09				2009/10			
		Full Year	Full Year	Full Year	Full Year	Full Year	Quarter 1	Quarter 2	Quarter 3	Quarter 4	Quarter 1	Quarter 2	Quarter 3	Quarter 4
Intermediate Level Apprenticeship	19-24	25,300	28,200	28,400	35,500	38,600	7,500	7,000	8,400	12,600	9,100	7,200	8,900	13,400
	25+	-	100	900	12,500	20,300	900	1,900	3,300	6,300	5,300	4,400	4,800	5,900
	Total	25,300	28,300	29,300	48,000	59,000	8,400	8,900	11,800	18,900	14,300	11,600	13,700	19,300
Advanced Level Apprenticeship	19-24	14,300	17,800	19,700	22,400	25,400	5,400	4,300	4,800	7,900	6,200	4,700	5,700	8,800
	25+	100	100	300	5,400	13,900	300	500	1,200	3,300	2,900	3,000	3,600	4,400
	Total	14,400	17,900	20,000	27,700	39,300	5,700	4,800	6,000	11,200	9,100	7,700	9,300	13,200
Higher Apprenticeship	19-24	-	-	-	-	100	-	-	-	-	-	-	-	100
	25+	-	-	-	-	-	-	-	-	-	-	-	-	-
	Total	-	-	-	-	200	-	-	-	-	-	-	-	100
All Apprenticeships	19-24	39,600	46,000	48,100	57,800	64,200	12,900	11,300	13,200	20,500	15,300	12,000	14,600	22,300
	25+	100	200	1,200	17,900	34,300	1,200	2,500	4,600	9,600	8,200	7,400	8,400	10,300
	Total	39,700	46,200	49,300	75,700	98,400	14,100	13,800	17,700	30,100	23,500	19,400	23,000	32,600

Notes

1) Please see the general footnotes and the Apprenticeships footnotes section for all information on these tables.

Table 4: Adult (19+) FE and Skills – Skills for Life Participation and Achievement by Level (2005/06 to 2009/10) – Learner Volumes

Measure	Level	2005/06	2006/07		2007/08		2008/09	2009/10	
		Full Year	Full Year	% change 05/06 to 06/07	Full Year	% change 06/07 to 07/08	Full Year	Full Year	% change 08/09 to 09/10
Participation	Total Learners	980,000	809,300	-17.4%	824,800	1.9%	945,100	909,100	-3.8%
	of which literacy	665,100	492,700	-25.9%	539,000	9.4%	629,700	565,200	-10.2%
	of which entry level	189,000	133,100	-29.6%	135,200	1.6%	140,200	114,900	-18.0%
	of which level 1	210,300	205,200	-2.4%	233,400	13.7%	276,200	228,300	-17.3%
	of which level 2	199,600	206,500	3.5%	221,000	7.0%	267,300	254,500	-4.8%
	of which numeracy	446,500	369,600	-17.2%	438,900	18.8%	568,300	534,200	-6.0%
	of which entry level	101,700	71,900	-29.3%	84,500	17.5%	115,900	103,800	-10.4%
	of which level 1	169,000	172,600	2.1%	208,200	20.7%	265,100	238,800	-9.9%
	of which level 2	157,000	164,500	4.8%	192,500	17.0%	242,800	231,500	-4.6%
	of which ESOL (English for Speakers of Other Languages)	252,700	230,200	-8.9%	203,200	-11.7%	197,100	187,000	-5.1%
	of which entry level	112,300	190,700	69.7%	173,600	-8.9%	168,700	157,900	-6.4%
	of which level 1	26,800	31,800	18.7%	24,400	-23.3%	24,100	24,100	-
	of which level 2	9,700	11,900	23.5%	9,400	-20.8%	9,300	9,700	3.5%
Achievement	Total Learners	737,800	540,900	-26.7%	520,700	-3.7%	639,100	614,600	-3.8%
	of which literacy	475,100	321,300	-32.4%	320,200	-	383,600	342,200	-10.8%
	of which entry level	142,500	97,500	-31.6%	94,600	-3.0%	93,800	80,600	-14.1%
	of which level 1	123,100	125,200	1.7%	132,200	5.6%	169,000	131,300	-22.3%
	of which level 2	110,000	123,300	12.0%	118,300	-4.1%	148,200	146,200	-1.3%
	of which numeracy	292,700	226,000	-22.8%	246,600	9.1%	338,300	317,000	-6.3%
	of which entry level	75,400	52,000	-31.0%	54,700	5.1%	74,000	70,000	-5.4%
	of which level 1	91,500	104,900	14.6%	115,100	9.7%	160,200	139,700	-12.8%
	of which level 2	80,600	88,500	9.8%	100,500	13.6%	132,800	127,900	-3.6%
	of which ESOL (English for Speakers of Other Languages)	207,800	156,000	-24.9%	144,900	-7.1%	140,900	133,300	-5.4%
	of which entry level	79,800	130,100	63.1%	125,100	-3.8%	121,500	112,900	-7.0%
	of which level 1	15,700	20,500	30.8%	15,700	-23.7%	15,600	15,900	1.6%
	of which level 2	5,100	7,500	47.2%	6,200	-16.5%	6,100	6,600	8.0%

Notes

1) Figures for 2008/09 onwards are not directly comparable to earlier years as the introduction of demand led funding has changed how data is collected and how funded learners are defined from 2008/09 onwards. More information on demand led funding is available at <http://www.thedataservice.org.uk/datadictionary/businessdefinitions/Demand+Led+Funding.htm>.

2) Totals for each Skills for Life type (Literacy, Numeracy and ESOL) in 2005/06 are less than the sum of individual levels (entry level, level 1 & level 2) within each type due to learning aims that were recorded with a level that was not entry level, level 1 or level 2 (aims with unknown/other level). These aims are included in the totals for the relevant Skills for Life type but not for any of the level breakdowns.

3) Total Participation in this table will not match Skills for Life participation in Table 1 as here Skills for Life courses on all funding streams are covered. Table 1 records Skills for Life for Learner Responsive only.

4) Please see the general footnotes section for further information on this table.

Table 5.1: Train to Gain Starts by Level (2005/06 to 2009/10)

Level	2005/06	2006/07	2007/08	2008/09	2009/10	2008/09				2009/10			
	April to July	Full Year	Full Year	Full Year	Full Year	Quarter 1	Quarter 2	Quarter 3	Quarter 4	Quarter 1	Quarter 2	Quarter 3	Quarter 4
	2006												
Foundation Learning Tier	-	-	-	8,100	2,700	2,000	1,700	2,700	1,700	900	500	900	500
Full Level 2	27,700	172,400	263,900	516,900	404,500	120,800	128,200	174,200	93,600	102,300	77,400	124,000	100,700
Other Level 2	-	-	-	1,700	-	-	200	1,100	400	-	-	-	-
Full Level 3	500	14,600	43,000	135,000	96,300	39,900	32,800	40,900	21,400	29,100	16,000	27,300	23,900
Other Level 3	-	-	-	400	300	-	100	300	100	200	100	-	100
Level 4 and above	-	-	-	11,700	4,200	4,100	2,700	3,300	1,500	1,700	700	1,000	700
Skills for Life	3,500	19,300	39,200	143,400	65,900	31,900	38,400	50,300	22,800	19,800	11,700	19,600	14,800
No Level Assigned	700	100	-	300	1,000	100	-	100	-	300	200	200	300
Total	32,400	206,300	346,200	817,400	574,900	198,800	204,100	272,900	141,500	154,300	106,600	173,100	141,000

Table 5.2: Train to Gain Achievements by Level (2005/06 to 2009/10)

Level	2005/06	2006/07	2007/08	2008/09	2009/10	2008/09				2009/10			
	April to July	Full Year	Full Year	Full Year	Full Year	Quarter 1	Quarter 2	Quarter 3	Quarter 4	Quarter 1	Quarter 2	Quarter 3	Quarter 4
	2006												
Foundation Learning Tier	-	-	-	5,300	3,800	900	1,000	1,400	2,000	1,200	1,000	800	900
Full Level 2	5,000	60,400	153,400	356,700	371,900	58,900	70,700	94,500	132,600	88,600	77,000	100,600	105,800
Other Level 2	-	-	-	900	400	-	-	100	700	200	200	-	-
Full Level 3	700	2,600	14,100	68,400	92,400	8,200	11,600	16,200	32,500	21,900	20,800	23,300	26,400
Other Level 3	-	-	-	200	400	-	-	-	100	200	100	-	-
Level 4 and above	-	-	-	7,300	7,100	1,100	1,400	1,700	3,100	1,800	1,700	1,800	1,800
Skills for Life	700	7,800	19,000	98,100	60,600	10,500	19,000	32,000	36,600	16,100	14,400	14,100	16,000
No Level Assigned	-	300	100	6,200	1,600	1,500	1,700	1,500	1,500	600	400	300	300
Total	6,500	71,100	186,500	543,100	538,300	81,100	105,300	147,500	209,200	130,500	115,600	141,000	151,200

Employer Training Pilot Achievements	2005/06	2006/07
	April to July 2006	Full Year
Full Level 2	22,600	16,200
Skills for Life	4,600	1,800
Total	27,200	18,000
Total with ETP	33,700	89,100

Notes

- 1) Figures for 2008/09 and 2009/10 are not comparable with earlier years as in 2008/09 and 2009/10 NVQs delivered in the workplace changed from being funded by FE to be funded by Train to Gain.
2) Please see the general footnotes and the Train to Gain/Workplace Learning footnotes section for further information on these tables.

Table 6: Adult Community Learning (2005/06 to 2007/08) and Adult Safeguarded Learning (2008/09 to 2009/10) Participation and Achievement by Type – Learner Volumes

Measure	Provision Type	Funded Learners					% change 08/09 to 09/10
		2005/06	2006/07	2007/08	2008/09	2009/10	
		Full Year	Full Year	Full Year	Full Year	Full Year	
Participation	Total Learners	765,700	796,700	709,200	755,000	752,800	-
	of which Personal and Community Development Learning		546,800	557,900	584,400	579,200	-0.9%
	of which Neighbourhood Learning in Deprived Communities		23,900	32,200	40,300	43,700	8.4%
	of which Family Literacy Language and Numeracy		68,800	67,100	71,000	71,300	-
	of which Wider Family Learning		70,000	75,300	80,500	79,600	-1.1%
Achievement	Total Learners	618,600	653,800	610,500	638,900	663,000	3.8%
	of which Personal and Community Development Learning		449,800	477,000	489,000	505,900	3.5%
	of which Neighbourhood Learning in Deprived Communities		20,800	28,400	34,400	39,800	15.6%
	of which Family Literacy Language and Numeracy		57,500	57,200	61,000	62,700	2.7%
	of which Wider Family Learning		57,800	67,300	71,400	72,600	1.6%

Notes

1) Figures for 2008/09 onwards are not directly comparable to earlier years as the introduction of demand led funding has changed how data is collected and how funded learners are defined from 2008/09 onwards. More information on demand led funding is available at <http://www.thedataservice.org.uk/datadictionary/businessdefinitions/Demand+Led+Funding.htm>.

2) Total participation in this table will not match Adult Safeguarded Learning participation in Table 1 as here Formal First Step provision in the Learner Responsive funding stream is not included. Table 1 includes Formal First Step provision.

3) Please see the general footnotes and the Adult Safeguarded Learning footnotes sections for all information on these tables.

Table 7.1: All Age FE and Skills Participation by Level (2005/06 to 2009/10) – Learner Volumes

		Funded Learners							
		2005/06	2006/07	% change	2007/08	% change	2008/09	2009/10	% change
		Full Year	Full Year	05/06 to 06/07	Full Year	06/07 to 07/08	Full Year	Full Year	08/09 to 09/10
Level									
Total Learners		5,022,400	4,231,900	-15.7%	4,360,700	3.0%	4,837,100	4,635,500	-4.2%
Participation	of which...								
	Below Level 2 (excluding Skills for Life)	1,365,500	905,200	-33.7%	864,700	-4.5%	788,400	745,800	-5.4%
	Skills for Life	1,478,000	1,297,800	-12.2%	1,312,100	1.1%	1,449,800	1,430,600	-1.3%
	Full Level 2	748,500	817,200	9.2%	1,042,300	27.5%	1,263,900	1,286,500	1.8%
	Full Level 3	596,700	611,400	2.5%	685,900	12.2%	795,300	867,000	9.0%
	Level 2	1,796,900	1,676,100	-6.7%	1,882,100	12.3%	2,125,400	2,045,200	-3.8%
	Level 3	967,700	944,700	-2.4%	1,001,800	6.0%	1,105,600	1,115,000	0.9%
	Level 4+	69,400	60,900	-12.3%	54,600	-10.4%	59,300	50,800	-14.4%
	No Level Assigned	1,445,500	1,276,700	-11.7%	1,268,600	-0.6%	1,492,800	1,558,300	4.4%

Table 7.2: All Age FE and Skills Achievement by Level (2005/06 to 2009/10) – Learner Volumes

		Funded Learners							
		2005/06	2006/07	% change	2007/08	% change	2008/09	2009/10	% change
		Full Year	Full Year	05/06 to 06/07	Full Year	06/07 to 07/08	Full Year	Full Year	08/09 to 09/10
Level									
Total Learners		3,598,000	2,912,700	-19.0%	2,960,900	1.7%	3,359,700	3,377,400	0.5%
Achievement	of which...								
	Below Level 2 (excluding Skills for Life)	960,300	626,800	-34.7%	625,100	-	592,200	581,400	-1.8%
	Skills for Life	1,017,300	821,100	-19.3%	812,600	-1.0%	965,900	952,400	-1.4%
	Full Level 2	336,100	369,500	9.9%	458,800	24.2%	644,500	721,100	11.9%
	Full Level 3	247,700	263,200	6.3%	294,300	11.8%	338,100	421,500	24.7%
	Level 2	1,035,600	962,300	-7.1%	1,055,200	9.7%	1,268,300	1,302,500	2.7%
	Level 3	546,300	549,700	0.6%	579,100	5.4%	628,100	674,600	7.4%
	Level 4+	33,400	30,600	-8.4%	26,400	-13.6%	28,000	27,500	-2.1%
	No Level Assigned	1,141,800	990,000	-13.3%	1,010,500	2.1%	1,146,100	1,219,100	6.4%

Table 7.3: All Age FE and Apprenticeship Success Rates by Level (2005/06 to 2009/10) – Percentages

		2005/06	2006/07	2007/08	2008/09	2009/10
		Full Year	Full Year	Full Year	Full Year	Full Year
Total Further Education/Learner Responsive Provision		76.2%	76.8%	80.2%	80.6%	80.7%
of which...						
	Skills for Life	66.7%	69.8%	74.2%	75.5%	74.7%
	Full Level 2	68.1%	69.7%	72.7%	74.4%	76.5%
	Full Level 3	63.3%	66.6%	71.6%	72.9%	76.0%
	Level 2	72.8%	74.8%	78.6%	79.6%	80.0%
	Level 3	74.6%	77.2%	79.9%	80.9%	80.9%
Apprenticeships						
of which...						
	Intermediate Level Apprenticeship	51.5%	60.2%	64.4%	70.4%	73.4%
	Advanced Level Apprenticeship	42.9%	56.4%	62.8%	72.1%	74.8%
	All	48.6%	59.0%	63.9%	70.9%	73.8%

Notes

1) These tables include Apprenticeships, Train to Gain, University for Industry, Adult Safeguarded Learning and Further Education/Learner Responsive Provision taken at General Further Education Colleges including Tertiary, Sixth Form Colleges, Special Colleges (Agricultural and Horticultural Colleges and Art and Design Colleges), Specialist Colleges and External Institutions.

2) Figures for 2008/09 onwards are not directly comparable to earlier years as the introduction of demand led funding has changed how data is collected and how funded learners are defined from 2008/09 onwards. More information on demand led funding is available at <http://www.thedataservice.org.uk/datadictionary/businessdefinitions/Demand+Led+Funding.htm>. Apprenticeship success rates are not affected by demand led funding.

3) Please see the general footnotes and the FE and Skills footnotes sections for further information on these tables.

Table 8.1: All Age Apprenticeship Programme Starts by Level and Age (2005/06 to 2009/10)

	Age	2005/06	2006/07	2007/08	2008/09	2009/10	2008/09				2009/10			
		Full Year	Full Year	Full Year	Full Year	Full Year	Quarter 1	Quarter 2	Quarter 3	Quarter 4	Quarter 1	Quarter 2	Quarter 3	Quarter 4
Intermediate Level Apprenticeship	Under 19	77,100	80,800	82,000	74,200	89,400	37,000	13,300	11,300	12,600	35,700	15,500	19,500	18,800
	19-24	45,600	46,500	55,200	52,600	72,800	18,000	12,000	12,800	9,800	20,100	16,200	17,200	19,300
	25+	100	100	14,600	31,700	28,400	9,900	8,700	8,500	4,600	7,600	5,400	8,100	7,200
	Total	122,800	127,400	151,800	158,500	190,500	64,900	34,000	32,600	27,000	63,400	37,100	44,800	45,300
Advanced Level Apprenticeship	Under 19	22,400	24,800	25,500	25,100	27,200	15,500	3,200	2,900	3,600	14,600	3,400	5,000	4,300
	19-24	29,500	32,000	34,800	32,000	39,800	13,400	6,500	6,700	5,400	14,900	7,000	8,700	9,200
	25+	200	100	12,600	24,200	20,600	8,400	6,100	6,100	3,500	5,800	3,300	6,100	5,500
	Total	52,100	56,900	72,900	81,300	87,700	37,300	15,800	15,700	12,500	35,200	13,600	19,700	19,100
Higher Apprenticeship	Under 19	-	-	-	-	100	-	-	-	-	100	-	-	-
	19-24	-	100	-	100	1,200	-	-	-	100	600	200	300	100
	25+	-	-	-	-	100	-	-	-	-	100	-	-	-
	Total	-	100	100	200	1,500	100	-	-	100	700	300	300	200
All Apprenticeships	Under 19	99,500	105,600	107,600	99,400	116,800	52,500	16,400	14,300	16,200	50,300	18,900	24,500	23,100
	19-24	75,200	78,600	90,100	84,700	113,800	31,500	18,500	19,500	15,200	35,600	23,400	26,100	28,600
	25+	300	300	27,200	55,900	49,100	18,300	14,900	14,600	8,100	13,400	8,700	14,200	12,800
	Total	175,000	184,400	224,800	239,900	279,700	102,300	49,800	48,300	39,500	99,300	51,000	64,800	64,500

Table 8.2: All Age Apprenticeship Framework Achievements by Level and Age (2005/06 to 2009/10)

	Age	2005/06	2006/07	2007/08	2008/09	2009/10	2008/09				2009/10			
		Full Year	Full Year	Full Year	Full Year	Full Year	Quarter 1	Quarter 2	Quarter 3	Quarter 4	Quarter 1	Quarter 2	Quarter 3	Quarter 4
Intermediate Level Apprenticeship	Under 19	45,000	50,100	47,100	50,200	52,900	11,700	8,300	9,100	21,000	12,200	8,700	9,800	22,300
	19-24	25,300	28,200	28,400	35,500	38,600	7,500	7,000	8,400	12,600	9,100	7,200	8,900	13,400
	25+	-	100	900	12,500	20,300	900	1,900	3,300	6,300	5,300	4,400	4,800	5,900
	Total	70,300	78,400	76,300	98,100	111,900	20,100	17,300	20,900	39,900	26,500	20,300	23,500	41,600
Advanced Level Apprenticeship	Under 19	14,000	15,600	16,200	17,500	20,100	4,000	2,800	3,600	7,100	4,500	3,700	3,800	8,100
	19-24	14,300	17,800	19,700	22,400	25,400	5,400	4,300	4,800	7,900	6,200	4,700	5,700	8,800
	25+	100	100	300	5,400	13,900	300	500	1,200	3,300	2,900	3,000	3,600	4,400
	Total	28,400	33,400	36,200	45,200	59,400	9,700	7,600	9,600	18,300	13,600	11,500	13,100	21,300
Higher Apprenticeship	Under 19	-	-	-	-	-	-	-	-	-	-	-	-	-
	19-24	-	-	-	-	100	-	-	-	-	-	-	-	100
	25+	-	-	-	-	-	-	-	-	-	-	-	-	-
	Total	-	-	-	-	200	-	-	-	-	100	-	-	100
All Apprenticeships	Under 19	59,000	65,700	63,300	67,700	73,100	15,700	11,200	12,800	28,100	16,700	12,400	13,600	30,400
	19-24	39,600	46,000	48,100	57,800	64,200	12,900	11,300	13,200	20,500	15,300	12,000	14,600	22,300
	25+	100	200	1,200	17,900	34,300	1,200	2,500	4,600	9,600	8,200	7,400	8,400	10,300
	Total	98,700	111,800	112,600	143,400	171,500	29,800	24,900	30,500	58,100	40,200	31,800	36,600	63,000

Notes

1) Please see the general footnotes and the Apprenticeships footnotes section for all information on these tables.

Table 9: All Age FE and Skills – Skills for Life Participation and Achievement by Level (2005/06 to 2009/10) – Learner Volumes

Measure	Level	2005/06	2006/07		2007/08		2008/09	2009/10	
		Full Year	Full Year	% change 05/06 to 06/07	Full Year	% change 06/07 to 07/08	Full Year	Full Year	% change 08/09 to 09/10
Participation	Total Learners	1,478,000	1,297,800	-12.2%	1,312,100	1.1%	1,449,800	1,430,600	-1.3%
	of which literacy	1,084,200	881,200	-18.7%	917,200	4.1%	1,017,900	961,600	-5.5%
	of which entry level	220,300	161,100	-26.9%	164,200	1.9%	169,600	153,300	-9.6%
	of which level 1	390,200	388,100	-0.6%	414,700	6.9%	463,400	422,300	-8.9%
	of which level 2	396,600	400,800	1.1%	403,100	0.6%	457,300	439,400	-3.9%
	of which numeracy	830,100	715,000	-13.9%	768,000	7.4%	901,700	882,800	-2.1%
	of which entry level	135,400	105,000	-22.5%	118,600	12.9%	153,600	151,300	-1.5%
	of which level 1	361,400	357,000	-1.2%	385,000	7.9%	441,400	422,300	-4.3%
	of which level 2	308,300	308,900	-	324,000	4.9%	378,600	367,300	-3.0%
	of which ESOL (English for Speakers of Other Languages)	266,800	244,200	-8.5%	218,100	-10.7%	211,800	201,500	-4.9%
	of which entry level	119,300	202,800	70.0%	186,500	-8.0%	181,000	170,000	-6.1%
	of which level 1	28,500	33,600	18.0%	26,400	-21.6%	26,200	26,300	-
	of which level 2	10,100	12,400	22.9%	10,000	-19.2%	10,100	10,400	3.1%
Achievement	Total Learners	1,017,300	821,100	-19.3%	812,600	-1.0%	965,900	952,400	-1.4%
	of which literacy	690,000	525,800	-23.8%	529,500	0.7%	615,700	577,200	-6.3%
	of which entry level	162,300	115,500	-28.8%	113,600	-1.6%	112,600	105,600	-6.1%
	of which level 1	206,700	226,300	9.5%	235,300	4.0%	282,700	243,300	-14.0%
	of which level 2	199,700	216,100	8.2%	211,300	-2.2%	253,900	250,300	-1.4%
	of which numeracy	484,200	403,100	-16.7%	425,200	5.5%	535,900	521,600	-2.7%
	of which entry level	97,400	74,200	-23.8%	78,000	5.0%	99,400	101,800	2.5%
	of which level 1	177,400	208,100	17.3%	216,700	4.1%	272,100	251,000	-7.7%
	of which level 2	146,700	147,200	-	159,600	8.4%	199,600	195,400	-2.1%
	of which ESOL (English for Speakers of Other Languages)	219,700	166,200	-24.4%	156,200	-6.1%	152,000	144,300	-5.1%
	of which entry level	85,000	139,000	63.5%	134,900	-2.9%	130,900	122,100	-6.7%
	of which level 1	16,800	21,800	30.0%	17,000	-21.9%	17,000	17,400	1.9%
	of which level 2	5,300	7,700	46.2%	6,600	-14.6%	6,700	7,200	7.7%

Notes

1) Figures for 2008/09 onwards are not directly comparable to earlier years as the introduction of demand led funding has changed how data is collected and how funded learners are defined from 2008/09 onwards. More information on demand led funding is available at <http://www.thedataservice.org.uk/datadictionary/businessdefinitions/Demand+Led+Funding.htm>.

2) Totals for each Skills for Life type (Literacy, Numeracy and ESOL) in 2005/06 are less than the sum of individual levels (entry level, level 1 & level 2) within each type due to learning aims that were recorded with a level that was not entry level, level 1 or level 2 (aims with unknown/other level). These aims are included in the totals for the relevant Skills for Life type but not for any of the level breakdowns.

3) Total Participation in this table will not match Skills for Life participation in Table 1 as here Skills for Life courses on all funding streams are covered. Table 1 records Skills for Life for Learner Responsive only.

4) Please see the general footnotes section for further information on this table.

Table 10.1: Young People (Under 19) FE and Apprenticeship Participation by Level (2005/06 to 2009/10) – Learner Volumes

		Funded Learners							
		2005/06	2006/07	2007/08	2008/09	2009/10			
			% change	% change		% change			
			05/06 to	06/07 to		08/09 to			
		Full Year	06/07	07/08	Full Year	09/10			
Level									
Total Learners		1,026,400	1,026,200	-	1,056,400	2.9%	1,065,900	1,095,000	2.7%
Participation	of which...								
	Below Level 2 (excluding Skills for Life)	333,600	315,700	-5.4%	332,200	5.2%	291,600	310,500	6.5%
	Skills for Life	498,000	488,500	-1.9%	487,200	-	504,700	521,500	3.3%
	Full Level 2	296,900	300,900	1.3%	302,200	-	295,400	315,500	6.8%
	Full Level 3	331,100	343,800	3.8%	357,800	4.1%	371,300	397,900	7.2%
	Level 2	551,300	557,700	1.2%	562,700	0.9%	576,400	594,000	3.1%
	Level 3	441,400	458,900	4.0%	473,600	3.2%	485,900	510,300	5.0%
	Level 4+	1,200	1,000	-15.4%	1,300	34.0%	1,100	1,300	12.2%
No Level Assigned	395,100	434,400	9.9%	464,900	7.0%	582,200	607,200	4.3%	

Table 10.2: Young People (Under 19) FE and Apprenticeship Achievement by Level (2005/06 to 2009/10) – Learner Volumes

		Funded Learners							
		2005/06	2006/07	2007/08	2008/09	2009/10			
			% change	% change		% change			
			05/06 to	06/07 to		08/09 to			
		Full Year	06/07	07/08	Full Year	09/10			
Level									
Total Learners		666,600	679,600	1.9%	717,300	5.5%	775,800	809,600	4.4%
Achievement	of which...								
	Below Level 2 (excluding Skills for Life)	202,200	196,600	-2.8%	218,600	11.2%	225,200	244,600	8.6%
	Skills for Life	279,600	280,200	-	291,900	4.2%	326,800	337,800	3.4%
	Full Level 2	119,600	133,900	12.0%	138,600	3.5%	150,600	165,100	9.6%
	Full Level 3	137,700	148,200	7.6%	159,800	7.8%	167,900	183,700	9.4%
	Level 2	276,400	301,700	9.2%	320,500	6.2%	357,500	376,500	5.3%
	Level 3	260,700	278,300	6.8%	293,500	5.5%	311,200	330,200	6.1%
	Level 4+	300	200	-11.8%	600	142.5%	500	500	9.8%
No Level Assigned	275,200	300,400	9.2%	327,700	9.1%	389,600	404,500	3.8%	

Table 10.3: Young People (Under 19) FE and Apprenticeship Success Rates by Level (2005/06 to 2009/10) – Percentages

		2005/06	2006/07	2007/08	2008/09	2009/10
		Full Year	Full Year	Full Year	Full Year	Full Year
Total Further Education/Learner Responsive Provision		75.1%	77.4%	79.9%	80.6%	81.1%
of which...	Skills for Life	69.0%	72.8%	76.0%	76.0%	75.5%
	Full Level 2	67.9%	70.1%	74.1%	75.9%	77.8%
	Full Level 3	64.9%	67.7%	72.6%	74.5%	76.6%
	Level 2	69.6%	73.3%	77.0%	78.3%	79.6%
	Level 3	77.5%	79.3%	81.0%	81.6%	81.5%
Apprenticeships						
of which...	Intermediate Level Apprenticeship	51.8%	60.3%	64.2%	68.3%	71.1%
	Advanced Level Apprenticeship	44.5%	56.9%	60.7%	73.6%	76.2%
	All	49.7%	59.5%	63.3%	69.6%	72.4%

Notes

1) These tables include Apprenticeships, Train to Gain, University for Industry, Adult Safeguarded Learning and Further Education/Learner Responsive Provision taken at General Further Education Colleges including Tertiary, Sixth Form Colleges, Special Colleges (Agricultural and Horticultural Colleges and Art and Design Colleges), Specialist Colleges and External Institutions.

2) Figures for 2008/09 onwards are not directly comparable to earlier years as the introduction of demand led funding has changed how data is collected and how funded learners are defined from 2008/09 onwards. More information on demand led funding is available at <http://www.thedataservice.org.uk/datadictionary/businessdefinitions/Demand+Led+Funding.htm>. Apprenticeship success rates are not affected by demand led funding.

3) Please see the general footnotes and the FE and Skills footnotes sections for further information on these tables.

Table 11: Young People (Under 19) FE and Apprenticeship – Skills for Life Participation and Achievement by Level (2005/06 to 2009/10) – Learner Volumes

Measure	Level	2005/06	2006/07		2007/08		2008/09	2009/10	
		Full Year	Full Year	% change 05/06 to 06/07	Full Year	% change 06/07 to 07/08	Full Year	Full Year	% change 08/09 to 09/10
Participation	Total Learners	498,000	488,500	-1.9%	487,200	-	504,700	521,500	3.3%
	of which literacy	419,100	388,500	-7.3%	378,200	-2.7%	388,200	396,300	2.1%
	of which entry level	31,300	28,000	-10.6%	29,000	3.5%	29,400	38,400	30.5%
	of which level 1	179,900	182,800	1.6%	181,300	-0.8%	187,200	194,000	3.6%
	of which level 2	197,000	194,200	-1.4%	182,100	-6.2%	190,000	184,900	-2.7%
	of which numeracy	383,600	345,400	-10.0%	329,100	-4.7%	333,400	348,600	4.6%
	of which entry level	33,700	33,100	-2.0%	34,000	3.0%	37,700	47,500	25.9%
	of which level 1	192,400	184,400	-4.1%	176,800	-4.1%	176,300	183,400	4.0%
	of which level 2	151,200	144,400	-4.5%	131,500	-8.9%	135,900	135,800	-
	of which ESOL (English for Speakers of Other Languages)	14,100	13,900	-1.3%	14,900	6.9%	14,700	14,500	-1.3%
	of which entry level	6,900	12,100	74.7%	12,900	6.6%	12,400	12,200	-1.5%
	of which level 1	1,700	1,800	7.1%	1,900	8.8%	2,100	2,100	0.8%
	of which level 2	400	500	9.2%	600	23.6%	700	700	-3.1%
Achievement	Total Learners	279,600	280,200	-	291,900	4.2%	326,800	337,800	3.4%
	of which literacy	214,900	204,500	-4.8%	209,200	2.3%	232,200	235,000	1.2%
	of which entry level	19,900	18,000	-9.3%	19,100	5.8%	18,800	25,100	33.4%
	of which level 1	83,500	101,100	21.0%	103,100	1.9%	113,800	111,900	-1.6%
	of which level 2	89,600	92,800	3.6%	93,000	-	105,800	104,100	-1.6%
	of which numeracy	191,500	177,100	-7.5%	178,600	0.8%	197,600	204,600	3.5%
	of which entry level	22,000	22,200	0.8%	23,300	5.0%	25,300	31,900	25.7%
	of which level 1	85,900	103,200	20.1%	101,600	-1.5%	111,900	111,300	-0.5%
	of which level 2	66,200	58,700	-11.3%	59,100	0.7%	66,900	67,500	1.0%
	of which ESOL (English for Speakers of Other Languages)	11,900	10,300	-14.1%	11,300	10.0%	11,100	10,900	-1.7%
	of which entry level	5,200	8,900	69.9%	9,800	10.1%	9,500	9,200	-3.1%
	of which level 1	1,100	1,300	17.5%	1,300	7.0%	1,400	1,500	5.3%
	of which level 2	200	300	23.4%	400	34.4%	500	500	3.9%

Notes

1) Figures for 2008/09 onwards are not directly comparable to earlier years as the introduction of demand led funding has changed how data is collected and how funded learners are defined from 2008/09 onwards. More information on demand led funding is available at <http://www.thedataservice.org.uk/datadictionary/businessdefinitions/Demand+Led+Funding.htm>.

2) Totals for each Skills for Life type (Literacy, Numeracy and ESOL) in 2005/06 are less than the sum of individual levels (entry level, level 1 & level 2) within each type due to learning aims that were recorded with a level that was not entry level, level 1 or level 2 (aims with unknown/other level). These aims are included in the totals for the relevant Skills for Life type but not for any of the level breakdowns.

3) Total Participation in this table will not match Skills for Life participation in Table 1 as here Skills for Life courses on all funding streams are covered. Table 1 records Skills for Life for Learner Responsive only.

4) Please see the general footnotes section for further information on this table.

Table 12.1: Level of Highest Qualification Held by People aged 19-59/64 in England (Quarter 4)¹ - percentages

Year	All people aged 19-59/64 ² (thousands)	Level 4 and above	Level 3	Level 3 and above	Level 2	Level 2 and above	Below Level 2 (incl no qualifications)
2006	29,427	33.1	20.2	53.2	18.7	71.9	28.1
2007	29,584	34.1	20.7	54.8	18.5	73.2	26.8
2008	29,737	34.5	20.7	55.2	19.0	74.2	25.8
2009	29,911	36.3	20.7	56.9	19.6	76.5	23.5
2010	30,127	37.6 ^P	21.1 ^P	58.8 ^P	18.9 ^P	77.7 ^P	22.3 ^P
2010 95% CI (+/-)		0.39		0.40		0.33	0.33

Table 12.2: Level of Highest Qualification Held by People aged 19-59/64 in England (Quarter 4)¹ - volumes (thousands)

Year	All people aged 19-59/64 ²	Level 4 and above	Level 3	Level 3 and above	Level 2	Level 2 and above	Below Level 2 (incl no qualifications)
2006	29,427	9,727	5,935	15,661	5,499	21,160	8,267
2007	29,584	10,091	6,112	16,203	5,461	21,664	7,920
2008	29,737	10,260	6,149	16,409	5,654	22,063	7,674
2009	29,911	10,850	6,178	17,028	5,848	22,876	7,035
2010	30,127	11,340 ^P	6,372 ^P	17,711 ^P	5,689 ^P	23,400 ^P	6,726 ^P
2010 95% CI (+/-)		117		119		101	101

Notes

1) Estimates were revised in March 2011 as a result of an improved methodology being adopted - see methodological note for further details.

2) Males aged 19 - 64 and females aged 19 - 59.

P) Provisional estimate - these estimates will be finalised in March 2012.

Table 13.1: Level Of Highest Qualification Held By Economically Active Adults In England (Quarter 4)^{1, 2} - percentages

Year	Economically active adults ³ (thousands)	Level 4 and above	Level 3	Level 3 and above	Level 2	Level 2 and above	Below Level 2 (incl no qualifications)
2006	24,238	35.8	20.8	56.6	19.6	76.2	23.8
2007	24,397	36.8	21.1	57.9	19.4	77.3	22.7
2008	24,672	36.9	21.1	58.0	20.0	78.0	22.0
2009	24,684	38.9	20.9	59.8	20.5	80.2	19.8
2010	24,819	40.5 ^P	21.3 ^P	61.8 ^P	19.7 ^P	81.5 ^P	18.5 ^P
2010 95% CI (+/-)		0.42		0.42		0.33	0.33

Table 13.2: Level Of Highest Qualification Held By Economically Active Adults In England (Quarter 4)^{1, 2} - volumes (thousands)

Year	Economically active adults ³	Level 4 and above	Level 3	Level 3 and above	Level 2	Level 2 and above	Below Level 2 (incl no qualifications)
2006	24,238	8,681	5,046	13,727	4,744	18,471	5,767
2007	24,397	8,975	5,151	14,126	4,731	18,857	5,540
2008	24,672	9,098	5,217	14,314	4,933	19,247	5,425
2009	24,684	9,590	5,162	14,752	5,050	19,802	4,882
2010	24,819	10,044 ^P	5,292 ^P	15,336 ^P	4,881 ^P	20,217 ^P	4,602 ^P
2010 95% CI (+/-)		104		103		83	83

Notes

- 1) Estimates for 2006 onwards were revised in March 2011 as a result of an improved methodology being adopted - see methodological note for further details.
- 2) 2010 estimates are provisional as 2011 LFS data and matched LFS-ILR data are not yet available; uplift to final results is estimated based on 2006 to 2009 data.
- 3) Economically active adults are defined as men aged 18 to 64 and women aged 18 to 59 either in employment or International Labour Organisation unemployed.
- P) Provisional estimate - these estimates will be finalised in March 2012.

Table 14: Vocational Qualification Achievements in the UK by Qualification Type, 2005 (October) to 2011 (September)

Quarter	National Vocational Qualification	Occupational Qualification	Qualifications and Credit Framework Qualification	Vocationally Related Qualification	Other Vocational Qualifications	Total
October 2005 to December 2006	126,600	5,800	-	426,200	369,600	928,200
January 2006 to March 2006	116,300	6,100	-	432,700	343,300	898,500
April 2006 to June 2006	121,000	6,100	-	482,500	599,800	1,209,400
July 2006 to September 2006	234,600	7,000	-	750,200	969,700	1,961,500
Total 2005/06 Academic Year	598,600	25,000	-	2,091,600	2,282,400	4,997,600
October 2006 to December 2006	121,300	7,100	-	411,400	382,600	922,400
January 2007 to March 2007	126,600	5,700	-	406,800	393,800	932,900
April 2007 to June 2007	129,600	6,000	400	507,900	678,200	1,322,100
July 2007 to September 2007	252,900	8,000	500	920,500	1,151,500	2,333,400
Total 2006/07 Academic Year	630,400	26,800	900	2,246,600	2,606,200	5,510,900
October 2007 to December 2007	128,700	4,900	1,300	408,500	423,500	966,900
January 2008 to March 2008	140,700	4,900	4,600	426,000	500,900	1,077,200
April 2008 to June 2008	170,600	6,400	8,600	643,100	755,700	1,584,400
July 2008 to September 2008	287,900	8,300	19,200	983,800	1,416,700	2,715,800
Total 2007/08 Academic Year	727,900	24,500	33,700	2,461,400	3,096,800	6,344,300
October 2008 to December 2008	164,100	5,800	19,400	416,200	474,500	1,079,900
January 2009 to March 2009	169,600	5,300	42,200	409,900	590,400	1,217,500
April 2009 to June 2009	216,400	6,300	65,000	715,900	829,300	1,832,900
July 2009 to September 2009	372,600	9,100	102,000	1,064,800	1,591,600	3,140,200
Total 2008/09 Academic Year	922,900	26,500	228,600	2,606,800	3,485,800	7,270,500
October 2009 to December 2009	212,000	6,000	85,000	414,700	457,500	1,175,200
January 2010 to March 2010	204,000	5,100	135,000	388,000	552,700	1,284,800
April 2010 to June 2010	213,500	5,700	202,700	726,100	831,100	1,979,000
July 2010 to September 2010	349,500	6,400	348,500	1,078,700	1,727,400	3,510,600
Total 2009/10 Academic Year	979,000	23,200	771,100	2,607,500	3,568,600	7,949,400
October 2010 to December 2010	179,600	6,200	274,700	285,700	422,900	1,169,200
January 2011 to March 2011	154,900	4,100	455,400	165,100	486,200	1,265,800
April 2011 to June 2011	128,500	3,600	721,300	385,000	670,900	1,909,200
July 2011 to September 2011	124,200	3,600	1,393,600	562,000	1,474,200	3,557,600
Total 2010/11 Academic Year	587,300	17,500	2,845,000	1,397,800	3,054,200	7,901,900

Notes

- 1) This table covers all levels of vocational qualifications reported through Ofqual. Data are supplied by awarding organisations.
- 2) For data relating to Vocational Qualifications, the Academic year runs from October to September. For example, the 2005/06 academic year runs from October 2005 to September 2006.
- 3) The data in this table has been subjected to revisions. These changes are due to updates from two awarding organisations.
- 4) Please see general notes and Vocational Qualifications footnotes section for all information on these tables.

Table 15: Young People (Under 19) FE and Apprenticeship Participation by Level (2010/11) – Learner Volumes

		Funded Learners	
		2010/11	
		Level	Full Year (provisional)
Total Learners		1,095,700	
Participation	of which...	Below Level 2 (excluding Skills for Life)	347,800
		Skills for Life	507,500
		Full Level 2	328,900
		Full Level 3	423,100
		Level 2	541,600
		Level 3	517,600
		Level 4+	2,000
		No Level Assigned	612,600

Table 16: Adult (19+) FE and Skills Participation by Level (2010/11) – Learner Volumes

		Funded Learners	
		2010/11	
		Level	Full Year (provisional)
Total Learners		3,129,200	
Participation	of which...	Below Level 2 (excluding Skills for Life)	369,800
		Skills for Life	956,200
		Full Level 2	972,100
		Full Level 3	489,500
		Level 2	1,260,400
		Level 3	538,300
		Level 4+	36,100
		No Level Assigned	872,700

Table 17: All Age FE and Skills Participation by Level (2010/11) – Learner Volumes

		Funded Learners	
		2010/11	
		Level	Full Year (provisional)
Total Learners		4,224,900	
Participation	of which...	Below Level 2 (excluding Skills for Life)	717,600
		Skills for Life	1,463,700
		Full Level 2	1,301,000
		Full Level 3	912,600
		Level 2	1,802,100
		Level 3	1,055,900
		Level 4+	38,100
		No Level Assigned	1,485,300

Notes

1) These tables include Apprenticeships, Other Employer-Based Training, University for Industry, Adult Safeguarded Learning and Further Education/Learner Responsive Provision taken at General Further Education Colleges including Tertiary, Sixth Form Colleges, Special Colleges (Agricultural and Horticultural Colleges and Art and Design Colleges), Specialist Colleges and External Institutions.

2) These tables show provisional estimates for 2010/11. Tables 2, 7 and 10 show full year volumes for previous years. It is not possible to directly compare provisional 2010/11 estimates with figures for previous years.

3) Please see the general footnotes and FE and Skills footnotes section for further information on these tables.

Table 18.1: All Age Apprenticeship Programme Starts by Level and Age (2010/11)

	Age	2010/11 Full Year (provisional)	2010/11			
			Quarter 1 (provisional)	Quarter 2 (provisional)	Quarter 3 (provisional)	Quarter 4 (provisional)
Intermediate Level Apprenticeship	Under 19	95,100	38,000	18,400	18,900	19,900
	19-24	87,700	21,000	20,100	23,300	23,200
	25+	109,900	16,500	26,900	31,800	34,600
	Total	292,700	75,600	65,400	74,000	77,700
Advanced Level Apprenticeship	Under 19	33,000	17,000	4,700	6,400	4,800
	19-24	49,900	15,900	10,100	12,300	11,600
	25+	65,000	10,800	13,500	20,200	20,600
	Total	147,900	43,700	28,200	38,900	37,000
Higher Apprenticeship	Under 19	200	100	-	-	-
	19-24	1,300	700	200	200	200
	25+	700	400	100	100	100
	Total	2,100	1,200	300	300	300
All Apprenticeships	Under 19	128,300	55,200	23,100	25,300	24,700
	19-24	138,900	37,700	30,400	35,800	35,000
	25+	175,500	27,700	40,500	52,100	55,200
	Total	442,700	120,600	93,900	113,200	115,000

Table 18.2: All Age Apprenticeship Framework Achievements by Level and Age (2010/11)

	Age	2010/11 Full Year (provisional)	2010/11			
			Quarter 1 (provisional)	Quarter 2 (provisional)	Quarter 3 (provisional)	Quarter 4 (provisional)
Intermediate Level Apprenticeship	Under 19	53,200	13,600	10,900	12,600	16,100
	19-24	45,000	10,700	10,700	11,200	12,400
	25+	21,500	4,600	4,500	5,500	7,000
	Total	119,700	28,800	26,100	29,300	35,500
Advanced Level Apprenticeship	Under 19	21,200	5,100	3,500	5,700	6,900
	19-24	25,300	6,500	5,300	5,900	7,600
	25+	14,700	3,300	2,900	3,800	4,800
	Total	61,100	14,800	11,600	15,400	19,300
Higher Apprenticeship	Under 19	100	-	-	-	-
	19-24	700	300	100	200	200
	25+	100	-	-	-	-
	Total	900	400	100	200	200
All Apprenticeships	Under 19	74,400	18,700	14,400	18,300	23,000
	19-24	71,000	17,500	16,000	17,300	20,200
	25+	36,300	7,800	7,400	9,300	11,800
	Total	181,700	44,000	37,800	44,900	55,000

Notes

1) This table shows provisional estimates for 2010/11. Apprenticeship starts and achievements figures for earlier years are available in Table 8 of this release. It is not possible to directly compare provisional 2010/11 estimates with figures for previous years.

2) Please see the general footnotes and the Apprenticeships footnotes section for further information on these tables.

Table 19.1: Workplace Learning Starts by Level (2010/11)

Level	2010/11 Full Year (provisional)	2010/11			
		Quarter 1 (provisional)	Quarter 2 (provisional)	Quarter 3 (provisional)	Quarter 4 (provisional)
Foundation Learning Tier	2,000	600	600	400	600
Full Level 2	300,700	82,600	81,500	81,500	55,000
Other Level 2	-	-	-	-	-
Full Level 3	76,900	25,700	20,600	16,800	13,800
Other Level 3	300	100	100	100	100
Level 4 and above	2,800	900	800	700	500
Skills for Life	61,700	16,700	14,500	16,300	14,200
No Level Assigned	300	100	100	100	-
Total	444,700	126,600	118,100	115,700	84,300

Table 19.2: Workplace Learning Achievements by Level (2010/11)

Level	2010/11 Full Year (provisional)	2010/11			
		Quarter 1 (provisional)	Quarter 2 (provisional)	Quarter 3 (provisional)	Quarter 4 (provisional)
Foundation Learning Tier	1,900	600	500	400	400
Full Level 2	286,100	74,900	70,800	72,100	68,300
Other Level 2	-	-	-	-	-
Full Level 3	71,600	17,300	16,800	18,900	18,600
Other Level 3	200	-	-	100	-
Level 4 and above	3,300	1,000	800	800	600
Skills for Life	49,200	10,600	12,800	13,100	12,700
No Level Assigned	300	100	100	100	100
Total	412,500	104,500	101,800	105,500	100,800

Notes

1) These tables show provisional estimates for 2010/11. Table 19.2 includes achievements for Workplace Learning qualifications which were started prior to 2010/11. Figures for earlier years are available in Table 5 of this release. It is not possible to directly compare provisional 2010/11 estimates with figures for previous years.

2) Please see the general footnotes and the Train to Gain/Workplace Learning footnotes section for further information on these tables.

Table 20: Young People (Under 19) FE and Apprenticeship – Skills for Life Participation by Level (2010/11) – Learner Volumes

Measure	Level	2010/11 Full Year (provisional)
Participation	Total Learners	507,500
	of which literacy	389,700
	of which entry level	98,300
	of which level 1	190,800
	of which level 2	122,200
	of which numeracy	362,900
	of which entry level	99,400
	of which level 1	178,300
	of which level 2	103,700
	of which ESOL (English for Speakers of Other Languages)	12,800
	of which entry level	10,500
	of which level 1	2,100
	of which level 2	700

Table 21: Adult (19+) FE and Skills – Skills for Life Participation by Level (2010/11) – Learner Volumes

Measure	Level	2010/11 Full Year (provisional)
Participation	Total Learners	956,200
	of which literacy	639,300
	of which entry level	105,200
	of which level 1	284,800
	of which level 2	284,100
	of which numeracy	630,600
	of which entry level	99,900
	of which level 1	313,700
	of which level 2	263,000
	of which ESOL (English for Speakers of Other Languages)	171,100
	of which entry level	141,800
	of which level 1	24,300
	of which level 2	9,500

Table 22: All Age FE and Skills – Skills for Life Participation by Level (2010/11) – Learner Volumes

Measure	Level	2010/11 Full Year (provisional)
Participation	Total Learners	1,463,700
	of which literacy	1,029,000
	of which entry level	203,500
	of which level 1	475,600
	of which level 2	406,300
	of which numeracy	993,400
	of which entry level	199,300
	of which level 1	492,000
	of which level 2	366,700
	of which ESOL (English for Speakers of Other Languages)	183,900
	of which entry level	152,300
	of which level 1	26,400
	of which level 2	10,200

Notes

1) These tables show provisional estimates for 2010/11. Skills for Life participation and achievement figures for earlier years are available in Tables 4, 9 and 11 of this release.

2) Please see the general footnotes section for further information on this table.

Table 23: Adult Safeguarded Learning Participation by Type (2010/11) – Learner Volumes

Measure	Provision Type	Funded Learners
		2010/11 Full Year (provisional)
	Total Learners	685,800
Participation	of which Personal and Community Development Learning	524,900
	of which Neighbourhood Learning in Deprived Communities	43,900
	of which Family Literacy Language and Numeracy	65,100
	of which Wider Family Learning	73,100

Notes

1) Adult Safeguarded Learning participation and achievement figures for earlier years are available in Table 6 of this release. It is not possible to directly compare provisional 2010/11 estimates with figures for previous years.

2) Please see the general footnotes and the Adult Safeguarded Learning footnotes section for further information on these tables.