



Quarterly Statistical First Release

Publication date:

16th November 2010

Next Updated on:

27th January 2011

Reference: DS/SFR8

Coverage: England

Theme: Children, Education and Skills

For further information contact:

Data Service: Service Desk

servicedesk@thedata-service.org.uk
0870 267 0001

Or view our web site at:

<http://www.thedata-service.org.uk/statistics>

Lead Statistician:

James Brennan

James.Brennan@bis.gsi.gov.uk

0207 215 1868

Department for Business, Innovation
and Skills,

Level 2,

1 Victoria Street,

London,

SW1H 0ET

© Data Service 2010

Publication reference number

Skills Funding Agency P - 100075

Post-16 Education & Skills: Learner Participation, Outcomes and Level of Highest Qualification Held

- 1 This is a Department for Business, Innovation and Skills (BIS) Statistical First Release (SFR), published by the Data Service, and updates information published on 24th June 2010. It includes information on government-funded¹ participation, achievement and success rates for post-16 education² (excluding schools and Higher Education) in England, between 2005/06 and 2008/09.
- 2 This SFR also includes provisional data, for the 2009/10 academic year. This data will be revised in the January 2011 SFR with more complete data. Provisional data in this Release includes:
 - Further Education (FE) and skills participation in 2009/10 by level and provision type;
 - Apprenticeship and Train to Gain starts and achievements in 2009/10.
- 3 It shows key statistics on the level of highest qualification held by adults in England from 2001 to 2009, calculated from Labour Force Survey (LFS) data. These include attainment rates for specific priority groups of adult learners in the population that are of key interest within BIS and the Skills Funding Agency.
- 4 This SFR also shows the number of vocational qualifications awarded in the United Kingdom, as collected by the Office of Qualifications and Examinations Regulation (Ofqual).

¹ Covering the Skills Funding Agency and the Young People's Learning Agency.

² Post-16 education includes provision delivered in FE organisations, sixth form colleges, independent training organisations, local authorities and other providers. This includes programmes such as Apprenticeships and Train to Gain. Data regarding school sixth forms is not included in this publication. Please see <http://readingroom.lsc.gov.uk/lsc/National/nat-statementofpriorities-nov07.pdf> for information on our funding priorities for 2008/09.

CONTENTS PAGE**Statistical Commentary**

Learner Participation and Achievement In 2008/09.....	Page 3
Issues with Comparing Data Across Academic Years.	Page 4
Key Headlines for 2008/09.....	Page 5
Apprenticeships.....	Page 6
Learner Responsive Learning.....	Page 8
Other Employer-Based Training.....	Page 9
Skills for Life.....	Page 10
Adult Safeguarded Learning.....	Page 11
University for Industry.....	Page 12
Success Rates.....	Page 12
Headlines for Provisional 2009/10 Data.....	Page 13
Changes Included in This SFR.....	Page 14
Changes in The Next SFR.....	Page 15

Supporting Data Section

Supplementary Tables.....	Page 15
Related National Statistics Releases.....	Page 15
Other Related Statistics.....	Page 16
Further Education Statistics for Other Countries in the UK.....	Page 16

Notes to Editors

Scope.....	Page 17
Data Definitions.....	Page 18
Publication Cycle.....	Page 18

Table Guide	Page 19
--------------------------	---------

Tables	Page 20
---------------------	---------

Learner Participation and Achievement in 2008/09

- 5 Table A shows a summary of the number of government-funded learners that have participated in further education in the 2008/09 academic year, the latest year for which we have complete data. Overall learner participation and achievement is shown, as well as activity on key programmes. This table includes learners who are studying on a course at a Further Education college or training provider, learners studying courses within their local community, employees undertaking an apprenticeship, and employees undertaking other qualifications in the workplace.

Table A: Government Funded Activity in Further Education in 2008/09

	Under 19 years old	19 and older	All Ages
Total Learner Participation	1,065,900	3,771,200	4,837,100
- of which full level 2	295,400	968,600	1,263,900
- of which full level 3	371,300	423,900	795,300
- of which Skills for Life	504,700	945,100	1,449,800
Total Learner Achievements	775,800	2,584,000	3,359,700
- of which full level 2	150,600	493,900	644,500
- of which full level 3	167,900	170,200	338,100
- of which Skills for Life	326,800	639,100	965,900
Apprenticeship Starts	99,000	140,600	239,900
- of which Level 2 Apprenticeships	73,800	84,300	158,500
- of which Level 3 Apprenticeships	25,100	56,200	81,400
Apprenticeship Achievements	67,300	75,700	143,400
- of which Level 2 Apprenticeships	49,900	48,000	98,100
- of which Level 3 Apprenticeships	17,500	27,700	45,200

Notes

1. Figures have been rounded to the nearest hundred.
2. Figures for Under 19s include a small number of under-16 year olds in total learner participation and learner achievement figures.
3. Figures do not include learners studying in School Sixth Forms.
4. Apprenticeship and Train to Gain starts are included in learner participation figures, and Apprenticeship and Train to Gain achievement figures are included in total learner achievements.
5. Level 3 Apprenticeship figures include a small number of Higher Level Apprenticeships.

Adult Attainment in the Population in 2009

- 6 The Labour Force Survey is used to measure the level of adult educational attainment in the population. Of men aged 19 to 64 and women aged 19 to 59 [Table 10.1]:
- i) 75.6 per cent were qualified to at least level 2 by quarter 4 of 2009;
 - ii) 55.9 per cent were qualified to at least level 3 by quarter 4 of 2009;
 - iii) 35.3 per cent were qualified to level 4 and above by quarter 4 of 2009.

Issues with Comparing Data Across Academic Years

- 7 In January 2007, BIS consulted on a new funding approach for learners. This included three new demand led funding (DLF) models and a new funding formula, all of which were introduced in the 2008/09 academic year.
- 8 To support this, it has been necessary to bring in some technical changes in 2008/9 to how and where some activities are counted. Table B shows the effect the new funding approach has had on how and where we count learners.
- 9 Table B shows that overall the new funding methodology has had a small impact of just over one per cent on total learner participation, and minimal effect on overall achievements. However, individual series (excluding Apprenticeship starts and achievements) are more significantly affected, and should not be compared with those in earlier years. The level of provision at which a learner is studying is unaffected. More information on these changes can be found at: <http://www.thedataservice.org.uk/NR/rdonlyres/5DC702AA-5117-40E1-A15E-01F95F2AF32B/0/TheeffectofDemandLedFundingonthecountof2008v2.doc>

Table B: Learner Numbers in 2007/08 Under the Previous and Current Funding Models

	Funding Stream (As at 2007/08)	2007/08 Funded Learners			
		Original Learner Numbers	Learner Numbers Under the New Funding Methodology	Difference	Change
Participation	Total Learners	4,360,700	4,417,000	56,200	1.3%
	of which Further Education (FE)	2,464,100	2,328,400	-135,700	-5.5%
	of which University for Industry (Ufi)	216,300	216,300	No Change	No Change
	of which Adult Community Learning (ACL)	725,400	824,500	99,000	13.7%
	of which Work-based Learning (WBL - includes Apprenticeships)	495,700	411,600	-84,100	-17.0%
	of which Train to Gain (TtG)	459,200	694,800	235,500	51.3%
Achievement	Total Learners	2,960,900	2,966,200	5,200	0.2%
	of which Further Education (FE)	1,896,800	1,777,200	-119,700	-6.3%
	of which University for Industry (Ufi)	116,100	116,100	No Change	No Change
	of which Adult Community Learning (ACL)	620,000	688,400	68,400	11.0%
	of which Work-based Learning (WBL - includes Apprenticeships)	141,600	112,500	-29,000	-20.5%
	of which Train to Gain (TtG)	186,500	304,000	117,500	63.0%

Notes

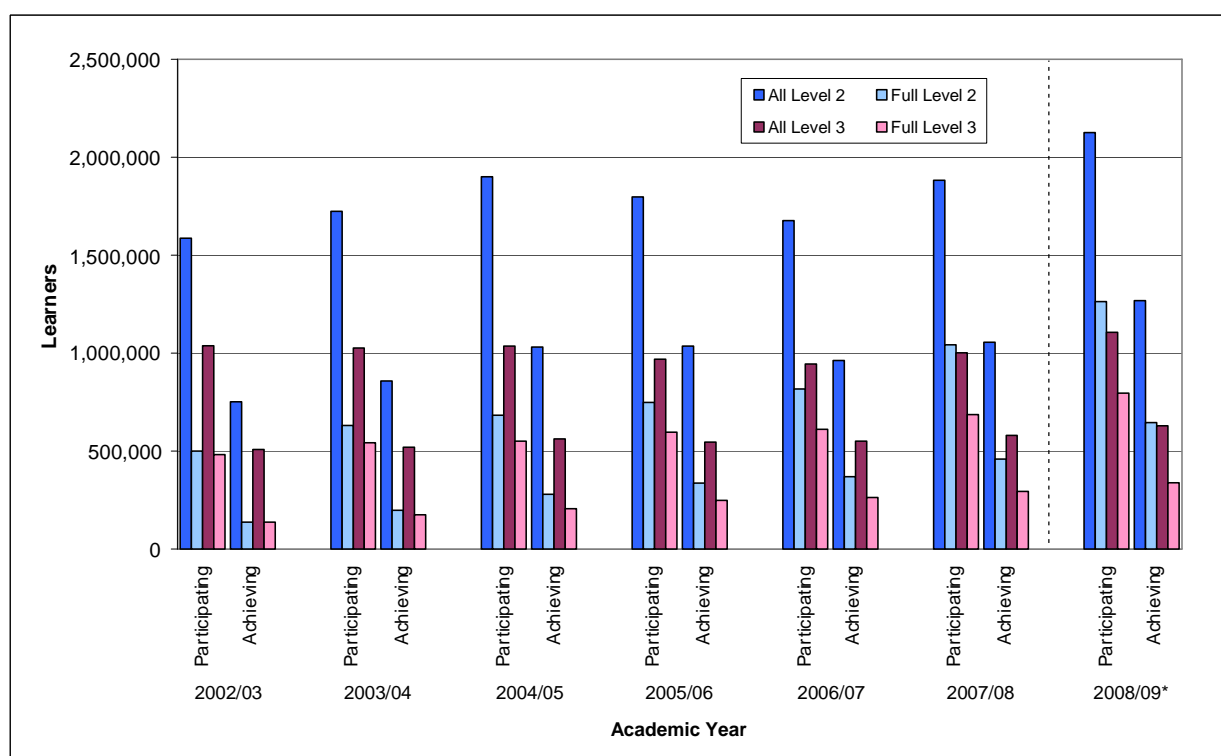
- Figures have been rounded to the nearest hundred; percentages are calculated based on pre-rounded data.
- Original Learner Numbers are the actual volume of funded learners in each funding stream in 2007/08. The New Funding Methodology totals are the modelled volumes of learners that would have been funded under demand led funding.
- In the new funding methodology, the FE totals do not include learners on Adult Safeguarded Learning (ASL) provision or learners studying NVQs in the workplace. Entry to Employment learners originally counted in the WBL funding stream have been added to the FE totals.
- In the new funding methodology, the ACL totals include all learners originally counted in the ACL collection and learners on ASL programmes originally counted in the FE collection.
- In the new funding methodology, the WBL totals only include all learners on Apprenticeship programmes. All other provision originally counted in the WBL collection is now counted in the FE totals and TtG totals.
- In the new funding methodology, the TtG totals include all learners originally counted in the TtG collection, as well as learners studying NVQs in the workplace that were originally counted in the FE collection and learners studying NVQs from the WBL collection that were not part of apprenticeship programmes.

Key Headlines For 2008/09

10 Chart 1 below shows learner participation and achievement at Level 2 (equivalent to GCSE level) and Level 3 (equivalent to A-Level) in government-funded further education since the 2002/03 academic year (the academic year runs from 1st August to 31st July). Note that this does not include School Sixth Form data.

11 The volume of learners participating and achieving on Level 2 and Level 3 courses has followed a similar trend between 2002/03 and 2008/09. There has been a gradual increase from 2002/03 to 2004/05, followed by a two year decline. From 2006/07, participation and achievement has risen steadily, with Level 2 and 3 figures at their highest level across the period in 2008/09.

Chart 1: Total Learner Participation and Achievement on Key Levels in Government-Funded Further Education



***Note: Learner Numbers for 2008/09 are not directly comparable with earlier years. See page 4 for more information.**

12 4,837,100 learners participated in government-funded Further Education in the 2008/09 academic year [Table 3.1]. Of these:

- 2,125,400 learners participated on a Level 2 course (of which 1,263,900 were full Level 2);
- 1,105,600 learners participated on a Level 3 course (of which 795,300 were full Level 3).

13 3,359,700 learners achieved a government-funded Further Education qualification in the 2008/09 academic year [Table 3.2]. Of these:

- 1,268,300 learners achieved a Level 2 qualification (of which 644,500 were full Level 2);
- 628,100 learners achieved on a Level 3 qualification (of which 338,100 were full Level 3).

14 Of the 4,837,100 learners participating in further education in 2008/09 [Table 4]:

- 55.7% were female, 44.3% were male;
- 11.5% of learners declared a Learning Difficulty, Disability or health problem;
- 17.2% were from a Black or Minority Ethnic background (including Mixed, Asian, Black and Chinese or Other Ethnic Group learners);
- 22.0% were under 19; 78.0% were aged 19 or older.

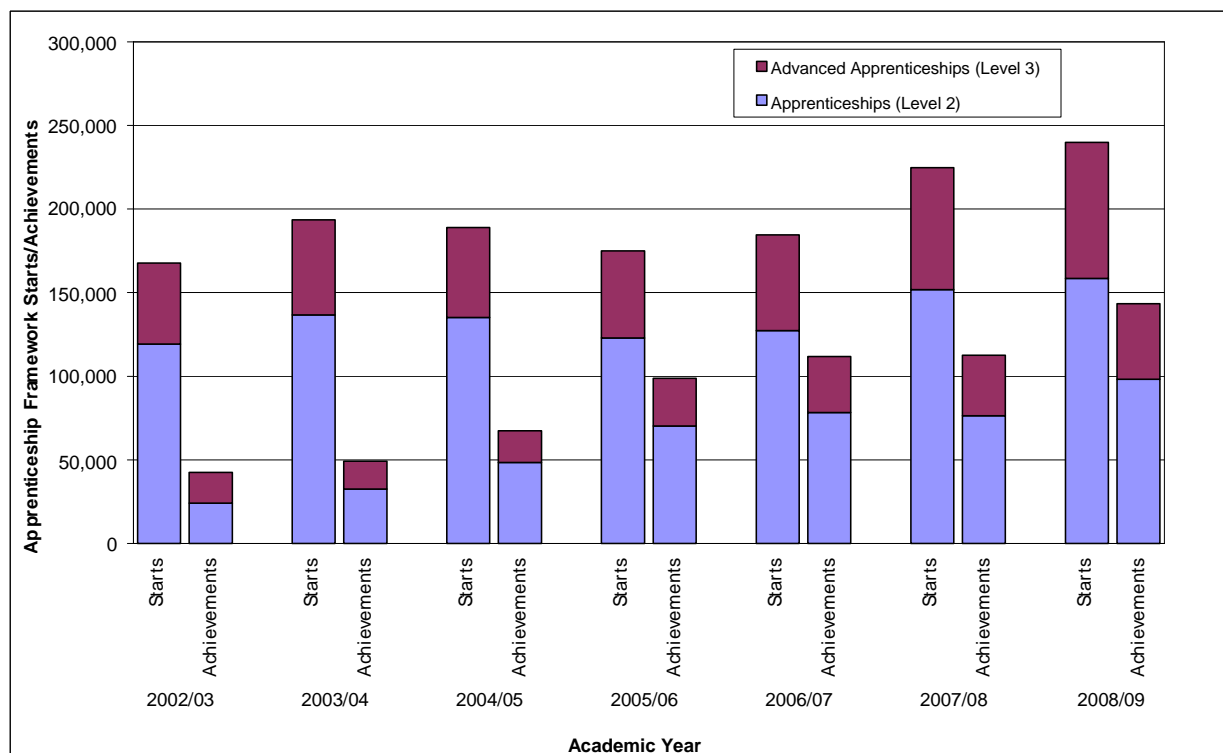
Apprenticeships

15 Apprenticeships are paid jobs that incorporate on- and off-the-job training leading to nationally recognised qualifications. As an employee, Apprentices earn as they learn and gain practical skills in the workplace.

16 An Apprenticeship framework contains the following separately certified elements.

- A knowledge-based element (the theoretical knowledge underpinning a job in a certain occupation and industry, typically certified via a Technical Certificate).
- A competence-based element (the ability to discharge the functions of a certain occupation, typically certified via work-based assessed national vocational qualifications - NVQs).
- Transferable skills (literacy and numeracy) - key skills / functional skills.
- A module on employment rights and responsibilities.

Chart 2: Apprenticeship Starts and Framework Achievements by Level



Starts

17 The volume of Apprenticeship starts in 2008/09 was 239,900 [Table 8.1]. This is an increase of 6.8 per cent compared to 2007/08. Of these there were:

- 158,500 Apprenticeship (Level 2) starts – a 4.4% increase on 2007/08;
- 81,400 Advanced Apprenticeship (Level 3) starts – a 11.6% increase on 2007/08. Note that this figure includes 200 Higher Level Apprenticeship starts.

- 16 – 18 year olds started 99,000 Apprenticeship frameworks – a 7.5% decrease on 2007/08;
- 19 – 24 year olds started 84,700 Apprenticeship frameworks – a 5.9% decrease on 2007/08;
- 25+ year olds started 55,900 Apprenticeship frameworks – over double the volume compared to 2007/08.

Framework Achievements

18 The volume of Apprenticeship framework achievements in 2008/09 was 143,400 [Table 8.2]. This is an increase of 27.4 per cent compared to 2007/08. Of these there were:

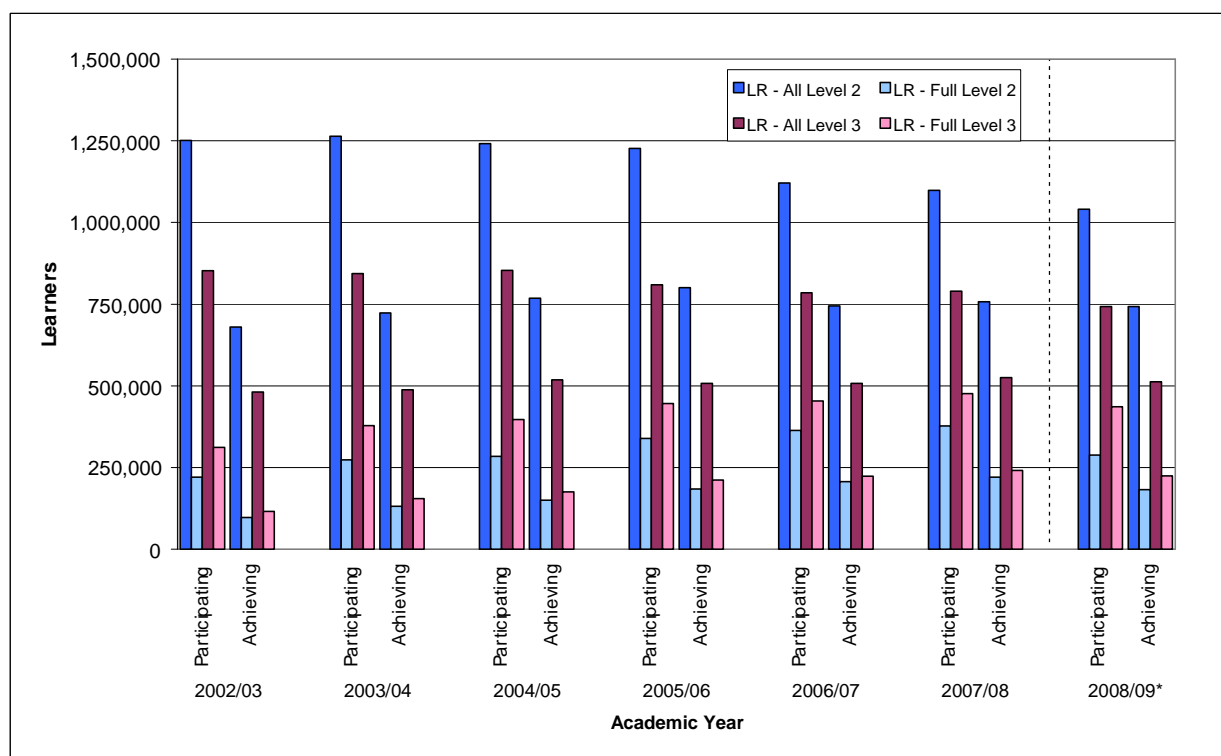
- 98,100 Apprenticeship (Level 2) framework achievements – a 28.6% increase on 2007/08;
- 45,200 Advanced Apprenticeship (Level 3) framework achievements – a 24.8% increase on 2007/08. Note that this figure includes a very small number of Higher Level Apprenticeship achievements.

- 16 – 18 year olds achieved 67,300 Apprenticeship frameworks – a 6.9% increase on 2007/08;
- 19 – 24 year olds achieved 57,800 Apprenticeship frameworks – a 20.2% increase on 2007/08;
- 25+ year olds achieved 17,900 Apprenticeship frameworks – a huge increase compared to 2007/08.

Learner Responsive Learning

19 Learner Responsive provision covers further education learning delivered mainly in a classroom, workshop, or through distance or e-learning.

Chart 3: Learner Participation and Achievement in Learner Responsive Further Education



***Note: Learner Numbers for 2008/09 are not directly comparable with earlier years. See page 4 for more information.**

20 Since 2003/04, the number of learners participating on Learner Responsive (LR) Level 2 and 3 courses has gradually fallen. This fall has been offset by a rise in learner starts on employer-based provision over the period, including the Apprenticeship and Train to Gain programmes.

21 Despite the reduction in learner participation on Level 2 and 3 Learner Responsive courses, the number of learners achieving a qualification has been fairly consistent over the period. This is due to a steady increase in the further education success rate, meaning that a higher proportion of qualifications undertaken each year have been successfully achieved.

22 There were 1,040,200 learners participating on a Level 2 qualification in 2008/09 through Learner Responsive provision [Table 4]. Of these:

- 441,100 were aged under 19 years old;
- 599,000 were aged 19 or older.

23 There were 742,700 learners participating on a Level 3 qualification in 2008/09 through Learner Responsive provision [Table 4]. Of these:

- 441,700 were aged under 19 years old;
- 300,900 were aged 19 or older.

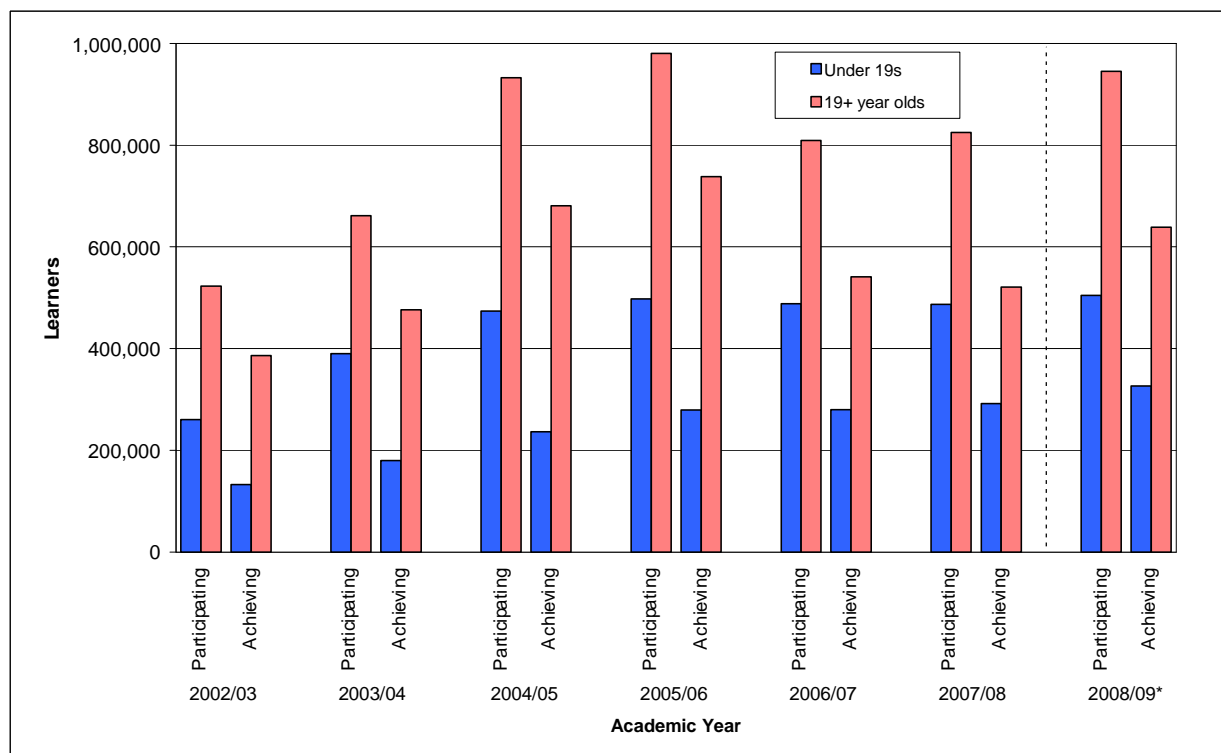
Other Employer-Based Training

- 24 Train to Gain was a national skills service aimed at meeting the needs of employers of all sizes and from all sectors to improve the skills of their employees as a route to improving their business performance. A broad range of training is covered – from basic skills to Level 2, Level 3 and other higher-level skills such as Leadership and Management. As announced in a letter from the BIS Secretary of State to the Skills Funding Agency Chief Executive in June 2010, Train to Gain will be abolished from the 2011/12 academic year. It will be replaced by a new workplace training programme, aimed at supporting smaller employers.
- 25 Train to Gain was launched in April 2006. Since then, the volume of Train to Gain starts has increased significantly. In 2008/09 there were 817,400 Train to Gain starts [Table 9.1]. Nearly two thirds of Train to Gain starts in 2008/09 were at Level 2, with a large proportion also at Level 3, or on Skills for Life courses.
- 26 In line with starts, Train to Gain achievements have increased significantly year on year since 2005/06. In 2008/09, there were 543,100 Train to Gain achievements [Table 9.2], two thirds of which were on Level 2 qualifications.

Skills for Life

27 Skills for Life qualifications are designed to give people the reading, writing, maths and communication skills they need in everyday life, to operate effectively in work and to help them succeed on other training courses.

Chart 4: Learner Participation and Achievement on Skills for Life Courses



***Note: Learner Numbers for 2008/09 are not directly comparable with earlier years. See page 4 for more information.**

28 Apart from a dip between 2005/06 and 2006/07, Skills for Life participation has been increasing over the period. The volume of Skills for Life achievements follows the same trend as that of participation with almost a million Skills for Life qualifications being achieved in the 2008/09 academic year.

29 Almost 1.45 million learners participated on a Skills for Life course in 2008/09 [Table 6]. Of these:

- 504,700 were aged under 19;
- 945,100 were aged 19 years or older.
- 1,014,600 learners participated on a Literacy course;
- 898,600 participated on a Numeracy course;
- 211,600 participated on an English for Speakers of Other Languages (ESOL) course.

Note that some learners undertake more than one type of Skills for Life qualification within an academic year, and hence the sum of Literacy, Numeracy and ESOL participation is greater than the total number of learners participating.

30 965,900 learners achieved a Skills for Life qualification in 2008/09 [Table 6]. Of these:

- 326,800 were aged under 19;
- 639,100 were aged 19 years or older.

- 614,900 learners achieved a Literacy qualification;
- 535,200 learners achieved a Numeracy qualification;
- 151,900 learners achieved an ESOL qualification.

Note that some learners achieve more than one type of Skills for Life qualification within an academic year, and hence the sum of Literacy, Numeracy and ESOL achievements is greater than the total number of learners achieving.

Adult Safeguarded Learning

31 Adult Safeguarded Learning (ASL) covers the delivery of a wide range of courses ranging from personal development through to older people's learning, digital inclusion, employability skills, family learning, civic engagement and community development. ASL courses may be offered by local authorities, colleges, and voluntary and community groups, and include activity specifically targeted at deprived areas and disadvantaged groups.

32 Adult Safeguarded Learning is delivered through five different programmes:

- Personal and Community Development Learning;
- Neighbourhood Learning in Deprived Communities;
- Family Literacy, Language and Numeracy;
- Wider Family Learning; and
- First Steps.

33 More information on Adult Safeguarded Learning and the different programmes, can be found at: <http://www.thedataservice.org.uk/datadictionary/businessdefinitions/Adult+Safeguarded+Learning+%28ASL%29.htm>

34 In 2008/09, 835,600 learners participated on an Adult Safeguarded Learning course [Table 7]. Of these:

- 584,400 learners took a Personal and Community Development Learning course;
- 40,300 learners took a Neighbourhood Learning in Deprived Communities course;
- 71,000 learners took a Family Literacy, Language and Numeracy course;
- 80,500 learners took a Wider Family Learning course; and
- 90,300 learners took a First Steps course.

Note that these figures include learners participating on more than one type of Adult Safeguarded Learning course.

University for Industry

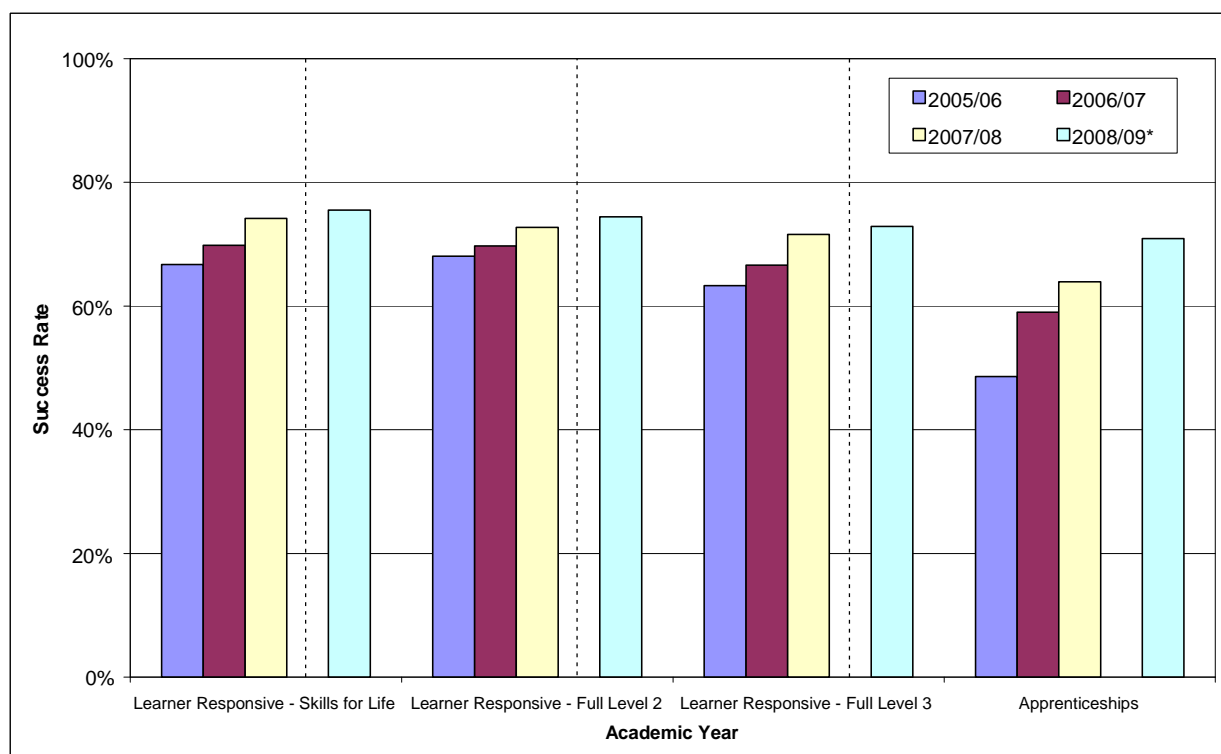
35 University for Industry delivers further education courses through the provider learndirect. Learners can study at a local centre, or via the Internet. In 2008/09, 189,300 learners were participating on a University for Industry course, including 107,600 learners studying a Level 2 course, and 800 learners studying a Level 3 course [Table 3.1 supplementary].

Success Rates

36 Success Rates are calculated for individual qualifications. They show how many learners that started a qualification went on to successfully complete it. Success Rates are typically calculated at a qualification level, but can be aggregated across different types of course, or for particular colleges or providers. Learner Responsive and Apprenticeship success rates are calculated on a slightly different basis; for more information please see

<http://www.thedataservice.org.uk/datadictionary/businessdefinitions/Success+Rates.htm>

Chart 5: Further Education Success Rates



***Note: Learner Responsive Success Rates for 2008/09 are not directly comparable with earlier years. See page 4 for more information.**

37 Chart 5 shows that both Learner Responsive and Apprenticeship framework success rates have risen since 2005/06. Success rates for Apprenticeship frameworks have risen dramatically since 2005/06, increasing by over twenty two percentage points to 70.9% in 2008/09.

38 2008/09 success rates [Table 3.3] were:

- 75.5% for Learner Responsive Skills for Life qualifications;
- 79.6% for Learner Responsive Level 2 qualifications (74.4% for Full Level 2);
- 80.9% for Learner Responsive Level 3 qualifications (72.9% for Full Level 3);

- 70.9% for all Apprenticeships;
- 70.4% for Apprenticeships (Level 2);
- 72.1% for Advanced Apprenticeships (Level 3).

39 Information on Train to Gain Success Rates can be found here:

http://www.thedataservice.org.uk/statistics/statisticalfirstrelease/sfr_other_statistics/

HEADLINES FOR PROVISIONAL 2009/10 DATA

Data for 2009/10

40 Data for 2009/10 is an early view of performance across the academic year, and will change as further data returns are received from Further Education Colleges and providers. This data will be revised in the January 2011 SFR with more complete data. Provisional participation data for 2009/10 should not be compared against final data from the 2008/09 academic year. Indicative estimates of how provisional this 2009/10 data is have been provided in the relevant tables of this release, based on the historic pattern of provider data returns. These should be used as a guide, to give an idea of the scale of revision when final data is available.

Apprenticeships

41 Provisional data shows that there were 273,900 Apprenticeship starts in the 2009/10 academic year [Table 19.1]. Of these there were:

- 187,000 Apprenticeship (Level 2) starts;
- 85,400 Advanced Apprenticeship (Level 3) starts; and
- 1,500 Higher Level Apprenticeship (Level 4 or higher) starts.

- 16 – 18 year olds started 113,700 Apprenticeship frameworks;
- 19 – 24 year olds started 111,500 Apprenticeship frameworks;
- 25+ year olds started 48,300 Apprenticeship frameworks.

42 Provisional data shows that there were 154,900 Apprenticeship framework achievements in the 2009/10 academic year [Table 19.2]. Of these there were:

- 101,300 Apprenticeship (Level 2) achievements;
- 53,400 Advanced Apprenticeship (Level 3) achievements; and
- 200 Higher Level Apprenticeship (Level 4 or higher) achievements.

- 16 – 18 year olds achieved 64,300 Apprenticeship frameworks;
- 19 – 24 year olds achieved 59,000 Apprenticeship frameworks;
- 25+ year olds achieved 31,300 Apprenticeship frameworks.

Other Employer-Based Training

- 43 Provisional data shows that there were 569,600 Train to Gain starts in the 2009/10 academic year [Table 20.1].
- 44 Provisional data shows that there were 497,200 Train to Gain achievements in the 2009/10 academic year [Table 20.2].

Learner Participation

- 45 Provisional data for 2009/10 shows that overall there were 4,607,500 learners participating in government-funded further education (excluding schools and Higher Education) [Table 15]. Of these:
- 1,093,300 were aged under 19 [Table 13];
 - 3,514,300 were aged 19 and over [Table 14].
 - 1,428,600 learners participated on a Skills for Life course [Table 15];
 - 2,047,400 learners participated on a Level 2 course, of which 1,289,400 were on a full Level 2 course [Table 15];
 - 1,113,600 learners participated on a Level 3 course, of which 865,200 were on a full Level 3 course [Table 15];
 - 777,900 learners participated on an Adult Safeguarded Learning course [Table 18].

CHANGES INCLUDED IN THIS SFR

- 46 Following a review of the content and timing of the SFR, we have made a number of changes to this Release. These include:
- Adding Table 4 into the main release, showing FE and Skills learner characteristics;
 - Adding Table 7 and Table 18 into the main release, showing participation and achievement in Adult Safeguarded Learning by component;
 - Adding Table 12 into the main release, showing a quarterly table on vocational qualification awards;
 - Adding a supplementary table to provide improved insight on the number of young people not in education, employment or training (NEET);
 - Adding a supplementary table showing international comparisons - the relative ranking in education attainment in the Organisation for Economic Co-operation and Development (OECD) countries.

CHANGES IN THE NEXT SFR

47 Following a review of the timing and content of the SFR, there will be a number of changes made to this Release between now and January 2011, when the next edition of the SFR will be published. The planned changes are listed below, though these are subject to change.

- Adding more information into the Release on the delivery of Level 4 provision across both Further and Higher Education;
- Adding further international comparison tables to the Release, to give an idea of how England compares to other countries;
- Adding more information on Employers engaging in the Further Education sector;
- Showing participation on courses recorded on the Qualification and Credits Framework.

48 More information on the review, and its findings, can be found at:

http://www.thedataservice.org.uk/statistics/statisticalfirstrelease/sfr_user_engagement/

SUPPORTING DATA

Supplementary Tables

- 49 A full list of supplementary tables relating to this SFR can be found on the Data Service website at: http://www.thedataservice.org.uk/statistics/statisticalfirstrelease/sfr_supplementary_tables/ These data include breakdowns by age, gender, ethnicity, learners with learning difficulties and/or disabilities and/or health problems, region, local authority, parliamentary constituency, sector subject area and funding stream. For more information on exactly what data will be released, and on which date, please see the supplementary tables list on the website.
- 50 Part of the release of supplementary data will show new information at a Local Authority level, including data at a sectoral level, and some information on further education providers.
- 51 The Data Service also plan to publish a research report into Science, Technology, Engineering and Mathematics (STEM) in the further education sector. This research report will be available on the statistics area of the Data Service website at: <http://www.thedataservice.org.uk/statistics/>

Related National Statistics Releases

- 52 There are a number of other National Statistics publications available that can be used to provide contextual information to this SFR. Some of those most relevant to this Release are discussed below.
- 53 [*Participation in Education, Training and Employment by 16-18 Year Olds in England*](#) published on 22nd June 2010. This shows that the overall proportion of 16-18 year olds in education and training was 82.7 per cent at the end of 2009 – the highest ever rate and an increase of 3.1 percentage points from 79.7 per cent at the end of 2008. The total number of 16-18 year olds in education and training increased by 39,000 to 1.65 million at the end of 2009, the highest number ever.
- 54 [*Level 2 and 3 Attainment by Young People in England Measured Using Matched Administrative Data: Attainment by Age 19 in 2008*](#) published on March 18th 2010. This shows that in 2009, 78.7 per cent of people aged 19 were qualified to at least Level 2, and 51.4 per cent were qualified to Level 3. This is an increase of 2.2 percentage points and 1.6 percentage points respectively, since 2008.
- 55 [*Higher Education Student Enrolments and Qualifications Obtained at Higher Education Institutions in the United Kingdom for the Academic Year 2008/09*](#) published on 14th January 2010. This Release shows that the total number of HE enrolments at English Higher Education Institutions stood at 2,005,845 in 2008/09, an increase of 4% from 2007/08. In terms of qualifications, in 2008/09 there were 276,145 first degree graduates – a 1% reduction from 2007/08.
- 56 [*Education and Training Statistics for the United Kingdom*](#) published on 26th November 2009. This Release provides statistics relating to education and training in the UK and includes chapters relating to post-compulsory education & training and qualifications. Information includes participation of learners in further education by country of study, participation in job-related training and the highest level of qualification held by adults in the population (UK).

Other Related Statistics

57 In December 2010 we will publish comparable information gathered through the Framework for Excellence on the quality and outcomes of further education provision. This information will include the views of learners and employers on the quality of the learning and training they have received; including attainment of learning aims, and progression into further and higher learning and employment. These indicators will be published on the Framework for Excellence website at: <http://ffe.skillsfundingagency.bis.gov.uk> More information on this will be included in the January 2011 SFR.

Further Education Statistics for Other Countries in the United Kingdom

58 The focus of this SFR is on government-funded Further Education provision in England. Similar information is available for other countries in the United Kingdom, and provides useful contextual background to these statistics.

59 Statistics on Further Education and Work-Based Learning in **Wales** can be found at: <http://wales.gov.uk/topics/statistics/headlines/post16education2010/1005131/?lang=en>

60 Statistics on Professional and Technical Enrolments in the **Northern Ireland** Further Education Sector for 2007/08 and 2008/09 can be found at: <http://www.delni.gov.uk/professional-and-technical-enrolments>

61 Facts and figures on learners in Further Education in **Scotland** can be found at: http://www.sfc.ac.uk/web/FILES/ReportsandPublications/Facts_and_Figures_2010.pdf
Additionally, user-defined tables on Further Education learners and courses can be produced at: <https://stats.sfc.ac.uk/infact/>

NOTES TO EDITORS

Scope

- 62 Should we need to make an unplanned revision to the statistics contained in this release, we will follow the procedures outlined in the Revisions Policy for this Statistical first Release. This can be found at: <http://www.thedataservice.org.uk/statistics/statisticalfirstrelease/compliance/>. This includes action to understand the impact that any revisions will have, as well as ensuring that they are clearly communicated to the reader.
- 63 Information from the different post-16 learning options have been drawn together to give a coherent and comprehensive picture of the participation and achievement of young people and adults after the age of 16. These options include:
- FE organisations
 - Sixth form colleges
 - Local Authorities
 - Independent training organisations.
- 64 These organisations deliver a wide variety of government programmes, including:
- College-based Learning
 - Apprenticeships
 - Train to Gain
 - University for Industry
 - Adult Safeguarded Learning.
- 65 This SFR does not contain information regarding:
- **Delivery in School Sixth Forms**, including maintained, independent and academy schools. We are hoping to include this in future editions of the SFR, once more work has been done to reconcile the different data sources. Figures taken from the Department for Education (DfE) Participation in Education, Training and Employment by 16-18 Year Olds in England Statistical Release show there were 507,300 students studying in School Sixth Forms in 2008/09, based on a snapshot of January 2009 census data.
 - **Higher education**. The publication referenced in paragraph 56 shows that the total number of HE enrolments at English Higher Education Institutions stood at 2,005,845 in 2008/09.
 - **Privately-funded training at FE organisations/ independent training organisations**. It is difficult to estimate the total volume of activity in the whole of the FE sector, including both public and privately funded learning. Table 12 of this Release shows the number of Vocational Qualifications awarded in the United Kingdom. This includes both public and privately funded qualifications, and gives some sense of scale of total vocationally-related activity in the sector.

DATA DEFINITIONS

66 A definitions document to accompany this release is available on the Data Service website at: http://www.thedataservice.org.uk/statistics/statisticalfirstrelease/sfr_current/

67 The 'Level of Highest Qualification Held by Adults' statistics provided here are produced using data on the highest qualification held by individuals from the Labour Force Survey in each year. The LFS is conducted by the Office for National Statistics and the estimates provided are the best measure of attainment within the population at Quarter 4 each year. Further details of how this information is used to calculate the estimates presented here can be found at: <http://www.thedataservice.org/statistics/statisticalfirstrelease/methodology/>

68 From 2004 onwards, statistics relating to changes in attainment of 19 year olds at Level 2 and monitoring progress towards young people's attainment targets are based on a new administrative data source published by the Department for Education. For more information, see the Release listed in paragraph 55.

PUBLICATION CYCLE ACROSS THE YEAR

69 Further information on the publication dates for future editions of the SFR can be found on the BIS statistics home page at: <http://stats.bis.gov.uk/>

70 Data published in this SFR is categorised as either 'provisional' or 'final'. Provisional data will be updated in future Releases, as more complete data becomes available. Table C below shows, for each quarterly Release, provisional and final data included.

Table C: Publication Cycle for this SFR

Release	Data Included
November 2010	- Provisional Learner Responsive (covering FE Colleges and providers) participation data for 2009/10
	- Provisional Employer Responsive (covering Apprenticeships and Train to Gain) data for 2009/10
January 2011	- Final Learner Responsive participation data for 2009/10
	- Final Learner Responsive achievement data for 2009/10
	- Final Employer Responsive data for 2009/10
	- Provisional Employer Responsive data for the first quarter of 2010/11
	- Further Education Success Rates for 2009/10
March 2011	- Provisional in-year Learner Responsive participation data for the first three months of 2010/11
	- Provisional in-year Employer Responsive data for the first half of 2010/11
	- Final data on the level of highest qualification held for adults in the population in 2010
June 2011	- Provisional in-year Learner Responsive participation data for the first six months of 2010/11
	- Provisional in-year Employer Responsive data for the first three quarters of 2010/11

71 The Statistical First Release is an evolving product, and we welcome feedback. If you have comments or feedback on the SFR, these can be sent to: servicedesk@thedata-service.org.uk, or alternatively, you can call 0870 267 0001.

72 If you have a statistical question around the content or presentation of National Statistics in the Release, please contact James Brennan at James.Brennan@bis.gsi.gov.uk

73 If you would like to sign up for Web alerts, so that you are automatically sent an alert when new information is put on the website, please subscribe at http://www.thedata-service.org.uk/News/ds_alerts/

TABLE GUIDE

74 This section provides a brief summary of what is included in each table of this Release.

- Tables 1 – 3 show standard performance metrics for the further education sector: participation; achievement; and success rates.
- Table 4 shows a demographic summary of learners participating in Further Education.
- Table 5 shows performance against the key programmes outlined in the relevant Government funding policy for the FE sector.
- Table 6 shows Skills for Life performance.
- Table 7 shows participation and achievement in Adult Safeguarded Learning.
- Tables 8 and 9 show starts and achievements for Apprenticeships and Train to Gain respectively. These are the standard performance metrics used to measure performance on these programmes.
- Tables 10 and 11 show level of attainment in the population (working age and economically active respectively) from the Labour Force Survey.
- Table 12 shows a quarterly time series of information on Vocational Qualifications awarded.
- Tables 13 to 20 repeat earlier tables; showing provisional full year performance for the 2009/10 academic year.

Supplementary Tables

75 A full list of supplementary tables relating to this SFR can be found on the Data Service website at: http://www.thedata-service.org.uk/statistics/statisticalfirstrelease/sfr_supplementary_tables/ These data include breakdowns by age, gender, ethnicity, learners with learning difficulties and/or disabilities and/or health problems, region, local authority, parliamentary constituency, sector subject area and funding stream.

Table 1.1: Young People (Under 19s) FE and Apprenticeship Participation by Level (2005/06 to 2008/09) – Learner Volumes

		Funded Learners ¹³					2008/09 ⁵
		2005/06	2006/07	2007/08	2008/09	2007/08	2008/09 ⁵
		Full Year	Full Year	% change	Full Year	% change	Full Year
		(final)	(final)	05/06 to	(final)	06/07 to	(final)
				06/07		07/08	
Level							
Total Learners		1,026,400	1,026,200	-	1,056,400	2.9%	1,065,900
	Below Level 2 (excluding Skills for Life)	333,600	315,700	-5.4%	332,200	5.2%	291,600
	Skills for Life	498,000	488,500	-1.9%	487,200	-	504,700
	Full Level 2	296,900	300,900	1.3%	302,200	-	295,400
Participation	of which...	331,100	343,800	3.8%	357,800	4.1%	371,300
	Level 2	551,300	557,700	1.2%	562,700	0.9%	576,400
	Level 3	441,400	458,900	4.0%	473,600	3.2%	485,900
	Level 4+	1,200	1,000	-15.4%	1,300	34.0%	1,100
	No Level Assigned	395,100	434,400	9.9%	464,900	7.0%	582,200

Table 1.2: Young People (Under 19s) FE and Apprenticeship Achievement by Level (2005/06 to 2008/09) – Learner Volumes

		Funded Learners ¹³					2008/09 ⁵
		2005/06	2006/07	2007/08	2008/09	2007/08	2008/09 ⁵
		Full Year	Full Year	% change	Full Year	% change	Full Year
		(final)	(final)	05/06 to	(final)	06/07 to	(final)
				06/07		07/08	
Level							
Total Learners		666,600	679,600	1.9%	717,300	5.5%	775,800
	Below Level 2 (excluding Skills for Life)	202,200	196,600	-2.8%	218,600	11.2%	225,200
	Skills for Life	279,600	280,200	-	291,900	4.2%	326,800
	Full Level 2	119,600	133,900	12.0%	138,600	3.5%	150,600
Achievement	of which...	137,700	148,200	7.6%	159,800	7.8%	167,900
	Level 2	276,400	301,700	9.2%	320,500	6.2%	357,500
	Level 3	260,700	278,300	6.8%	293,500	5.5%	311,200
	Level 4+	300	200	-11.8%	600	142.5%	500
	No Level Assigned	275,200	300,400	9.2%	327,700	9.1%	389,600

Table 1.3: Young People (Under 19s) FE and Apprenticeship Success Rates by Level (2005/06 to 2008/09) – Percentages

		2005/06	2006/07	2007/08	2008/09 ⁵
		Full Year	Full Year	Full Year	Full Year
		(final)	(final)	(final)	(final)
Level					
Total Further Education/Learner Responsive Provision		75.1%	77.4%	79.9%	80.6%
	Skills for Life	69.0%	72.8%	76.0%	76.0%
	Full Level 2	67.9%	70.1%	74.1%	75.9%
of which...	Full Level 3	64.9%	67.7%	72.6%	74.5%
	Level 2	69.6%	73.3%	77.0%	78.3%
	Level 3	77.5%	79.3%	81.0%	81.6%
Apprenticeships					
	Apprenticeships (level 2)	51.8%	60.3%	64.2%	68.3%
of which...	Advanced Apprenticeships (level 3)	44.5%	56.9%	60.7%	73.6%
	All	49.7%	59.5%	63.3%	69.6%

Notes

1) The following data sources have been used; FE - 2007/08 and earlier years (F05 Final), 2008/09 (L05 Final); WBL - 2007/08 and earlier years (W13 Final), 2008/09 (E13 Final); ACL - 2006/07 and earlier years (C03), 2007/08 (C03 Final, C02 Final), 2008/09 (C05 Final, C04 Final); UFI - 2008/09 and earlier years (U05 Final); Employer Training Pilot (ETP) - 2006/07 and earlier years (ETP database).

2) These tables include Apprenticeships, Train to Gain, University for Industry, Adult Safeguarded Learning and Further Education/Learner Responsive Provision which includes General Further Education Colleges including Tertiary, Sixth Form Colleges, Special College - Agricultural and Horticultural Colleges and Art and Design Colleges, Specialist Colleges and External Institutions.

3) Volumes are rounded to the nearest hundred; percentages are calculated on pre-rounded data.

4) '-' Indicates a base value of less than fifty or a percentage of less than 0.5%.

5) Figures for 2008/09 are not directly comparable to earlier years as the introduction of demand led funding has changed how data is collected and how funded learners are defined from 2008/09 onwards. More information on demand led funding is available at <http://www.thedataservice.org.uk/datadictionary/businessdefinitions/Demand+Led+Funding.htm>.

6) To allow for comparison between different data sources, tables use age as at 31 August of the academic year for all provision. These tables include learners under 19, including a small number of under 16 year olds.

7) Full-year numbers are a count of the number of learners that participated/achieved at any point during the year. Learners undertaking/achieving more than one course will appear only once in the 'total learners' category for each data collection. However, learners that are included in different data collections, whether that relates to different years or different funding streams, will be counted more than once. All learners undertaking/achieving a full level 2 or 3 qualification will also appear in the level 2 or level 3 category, respectively.

8) Success rates are calculated as the number of learning aims achieved divided by the number of learning aims expected to complete, excluding any learners who transferred on to another learning aim within the same institution.

9) Apprenticeship success rates are based on the number of learners who meet all of the requirements of their apprenticeship framework, divided by the number of learners who have left training or successfully completed their training in the academic year.

10) Apprenticeship success rates are not affected by demand led funding.

11) Table 1.2 reports on the actual number of achievements within the academic year without reference to those which were expected to complete. Table 1.3 reports success rates which are based on the reported achievement of individual aims that were expected to complete in the academic year.

12) FE and Skills participation figures for 2009/10 are available in tables 13-15 of this release.

13) Funded learners in this table are those learners that were funded by the Learning and Skills Council and/or are now funded by the Skills Funding Agency or Young People's Learning Agency.

14) Further breakdowns of the data are available at the Data Service website: www.thedataservice.org.uk/statistics.

Table 2.1: Adult (19+) FE and Skills Participation by Level (2005/06 to 2008/09) – Learner Volumes

		Funded Learners ¹³					2008/09 ⁵
		2005/06	2006/07	2007/08	2008/09	2008/09	
		Full Year	Full Year	% change	Full Year	% change	Full Year
Level		(final)	(final)	05/06 to	(final)	06/07 to	(final)
				06/07		07/08	
Total Learners		3,996,000	3,205,700	-19.8%	3,304,400	3.1%	3,771,200
	Below Level 2 (excluding Skills for Life)	1,031,800	589,500	-42.9%	532,500	-9.7%	496,800
	Skills for Life	980,000	809,300	-17.4%	824,800	1.9%	945,100
	Full Level 2	451,600	516,300	14.3%	740,000	43.3%	968,600
	Full Level 3	265,600	267,600	0.7%	328,100	22.6%	423,900
Participation	of which...						
	Level 2	1,245,500	1,118,400	-10.2%	1,319,400	18.0%	1,549,000
	Level 3	526,300	485,800	-7.7%	528,200	8.7%	619,700
	Level 4+	68,300	59,900	-12.2%	53,200	-11.1%	58,200
	No Level Assigned	1,050,400	842,300	-19.8%	803,600	-4.6%	910,500

Table 2.2: Adult (19+) FE and Skills Achievement by Level (2005/06 to 2008/09) – Learner Volumes

		Funded Learners ¹³					2008/09 ⁵
		2005/06	2006/07	2007/08	2008/09	2008/09	
		Full Year	Full Year	% change	Full Year	% change	Full Year
Level		(final)	(final)	05/06 to	(final)	06/07 to	(final)
				06/07		07/08	
Total Learners		2,931,400	2,233,100	-23.8%	2,243,600	-	2,584,000
	Below Level 2 (excluding Skills for Life)	758,100	430,200	-43.2%	406,500	-5.5%	367,000
	Skills for Life	737,800	540,900	-26.7%	520,700	-3.7%	639,100
	Full Level 2	216,500	235,600	8.8%	320,300	35.9%	493,900
	Full Level 3	110,000	115,000	4.6%	134,400	16.9%	170,200
Achievement	of which...						
	Level 2	759,200	660,600	-13.0%	734,700	11.2%	910,800
	Level 3	285,600	271,400	-5.0%	285,600	5.2%	317,000
	Level 4+	33,100	30,300	-8.4%	25,800	-14.9%	27,600
	No Level Assigned	866,600	689,700	-20.4%	682,800	-1.0%	756,400

Table 2.3: Adult (19+) FE and Apprenticeship Success Rates by Level (2005/06 to 2008/09) – Percentages

		2005/06	2006/07	2007/08	2008/09 ⁵
Level		Full Year	Full Year	Full Year	Full Year
		(final)	(final)	(final)	(final)
Total Further Education/Learner Responsive Provision		76.8%	76.5%	80.5%	80.6%
	Skills for Life	65.3%	67.9%	73.1%	75.1%
	Full Level 2	68.3%	69.4%	71.4%	72.1%
	Full Level 3	62.0%	65.5%	70.6%	70.1%
	Level 2	74.2%	75.6%	79.6%	80.5%
	Level 3	68.6%	72.0%	77.1%	78.4%
Apprenticeships					
	Apprenticeships (level 2)	50.9%	60.1%	64.8%	72.8%
	Advanced Apprenticeships (level 3)	41.4%	56.0%	64.5%	71.2%
	All	46.9%	58.5%	64.7%	72.2%

Notes

1) The following data sources have been used; FE - 2007/08 and earlier years (F05 Final), 2008/09 (L05 Final); WBL - 2007/08 and earlier years (W13 Final), 2008/09 (E13 Final); ACL - 2006/07 and earlier years (C03), 2007/08 (C03 Final, C02 Final), 2008/09 (C05 Final, C04 Final); UFI - 2008/09 and earlier years (U05 Final); Employer Training Pilot (ETP) - 2006/07 and earlier years (ETP database).

2) These tables include Apprenticeships, Train to Gain, University for Industry, Adult Safeguarded Learning and Further Education/Learner Responsive Provision which includes General Further Education Colleges including Tertiary, Sixth Form Colleges, Special College - Agricultural and Horticultural Colleges and Art and Design Colleges, Specialist Colleges and External Institutions.

3) Volumes are rounded to the nearest hundred; percentages are calculated on pre-rounded data.

4) '-' Indicates a base value of less than fifty or a percentage of less than 0.5%.

5) Figures for 2008/09 are not directly comparable to earlier years as the introduction of demand led funding has changed how data is collected and how funded learners are defined from 2008/09 onwards. More information on demand led funding is available at <http://www.thedataservice.org.uk/data/dictionary/businessdefinitions/Demand+Led+Funding.htm>.

6) To allow for comparison between different data sources, tables use age as at 31 August of the academic year for all provision. These tables include learners under 19, including a small number of under 16 year olds.

7) Full-year numbers are a count of the number of learners that participated/achieved at any point during the year. Learners undertaking/achieving more than one course will appear only once in the 'total learners' category for each data collection. However, learners that are included in different data collections, whether that relates to different years or different funding streams, will be counted more than once. All learners undertaking/achieving a full level 2 or 3 qualification will also appear in the level 2 or level 3 category, respectively.

8) Success rates are calculated as the number of learning aims achieved divided by the number of learning aims expected to complete, excluding any learners who transferred on to another learning aim within the same institution.

9) Apprenticeship success rates are based on the number of learners who meet all of the requirements of their apprenticeship framework, divided by the number of learners who have left training or successfully completed their training in the academic year.

10) Apprenticeship success rates are not affected by demand led funding.

11) Table 2.2 reports on the actual number of achievements within the academic year without reference to those which were expected to complete. Table 2.3 reports success rates which are based on the reported achievement of individual aims that were expected to complete in the academic year.

12) FE and Skills participation figures for 2009/10 are available in tables 13-15 of this release.

13) Funded learners in this table are those learners that were funded by the Learning and Skills Council and/or are now funded by the Skills Funding Agency or Young People's Learning Agency.

14) Further breakdowns of the data are available at the Data Service website: www.thedataservice.org.uk/statistics.

Table 3.1: Overall FE and Skills Participation by Level (2005/06 to 2008/09) – Learner Volumes

		Funded Learners ¹³					2008/09 ⁵
		2005/06	2006/07		2007/08		2008/09 ⁵
		Full Year	Full Year	% change	Full Year	% change	Full Year
Level		(final)	(final)	05/06 to	(final)	06/07 to	(final)
				06/07		07/08	
Total Learners		5,022,400	4,231,900	-15.7%	4,360,700	3.0%	4,837,100
	Below Level 2 (excluding Skills for Life)	1,365,500	905,200	-33.7%	864,700	-4.5%	788,400
	Skills for Life	1,478,000	1,297,800	-12.2%	1,312,100	1.1%	1,449,800
	Full Level 2	748,500	817,200	9.2%	1,042,300	27.5%	1,263,900
	Full Level 3	596,700	611,400	2.5%	685,900	12.2%	795,300
Participation	of which...						
	Level 2	1,796,900	1,676,100	-6.7%	1,882,100	12.3%	2,125,400
	Level 3	967,700	944,700	-2.4%	1,001,800	6.0%	1,105,600
	Level 4+	69,400	60,900	-12.3%	54,600	-10.4%	59,300
	No Level Assigned	1,445,500	1,276,700	-11.7%	1,268,600	-0.6%	1,492,800

Table 3.2: Overall FE and Skills Achievement by Level (2005/06 to 2008/09) – Learner Volumes

		Funded Learners ¹³					2008/09 ⁵
		2005/06	2006/07		2007/08		2008/09 ⁵
		Full Year	Full Year	% change	Full Year	% change	Full Year
Level		(final)	(final)	05/06 to	(final)	06/07 to	(final)
				06/07		07/08	
Total Learners		3,598,000	2,912,700	-19.0%	2,960,900	1.7%	3,359,700
	Below Level 2 (excluding Skills for Life)	960,300	626,800	-34.7%	625,100	-	592,200
	Skills for Life	1,017,300	821,100	-19.3%	812,600	-1.0%	965,900
	Full Level 2	336,100	369,500	9.9%	458,800	24.2%	644,500
	Full Level 3	247,700	263,200	6.3%	294,300	11.8%	338,100
Achievement	of which...						
	Level 2	1,035,600	962,300	-7.1%	1,055,200	9.7%	1,268,300
	Level 3	546,300	549,700	0.6%	579,100	5.4%	628,100
	Level 4+	33,400	30,600	-8.4%	26,400	-13.6%	28,000
	No Level Assigned	1,141,800	990,000	-13.3%	1,010,500	2.1%	1,146,100

Table 3.3: Overall FE and Apprenticeship Success Rates by Level (2005/06 to 2008/09) – Percentages

		2005/06	2006/07	2007/08	2008/09 ⁵
Level		Full Year	Full Year	Full Year	Full Year
		(final)	(final)	(final)	(final)
Total Further Education/Learner Responsive Provision		76.2%	76.8%	80.2%	80.6%
	Skills for Life	66.7%	69.8%	74.2%	75.5%
	Full Level 2	68.1%	69.7%	72.7%	74.4%
	Full Level 3	63.3%	66.6%	71.6%	72.9%
	Level 2	72.8%	74.8%	78.6%	79.6%
	Level 3	74.6%	77.2%	79.9%	80.9%
Apprenticeships					
	Apprenticeships (level 2)	51.5%	60.2%	64.4%	70.4%
	Advanced Apprenticeships (level 3)	42.9%	56.4%	62.8%	72.1%
	All	48.6%	59.0%	63.9%	70.9%

Notes

1) The following data sources have been used; FE - 2007/08 and earlier years (F05 Final), 2008/09 (L05 Final); WBL - 2007/08 and earlier years (W13 Final), 2008/09 (E13 Final); ACL - 2006/07 and earlier years (C03), 2007/08 (C03 Final, C02 Final), 2008/09 (C05 Final, C04 Final); UFI - 2008/09 and earlier years (U05 Final); Employer Training Pilot (ETP) - 2006/07 and earlier years (ETP database).

2) These tables include Apprenticeships, Train to Gain, University for Industry, Adult Safeguarded Learning and Further Education/Learner Responsive Provision which includes General Further Education Colleges including Tertiary, Sixth Form Colleges, Special College - Agricultural and Horticultural Colleges and Art and Design Colleges, Specialist Colleges and External Institutions.

3) Volumes are rounded to the nearest hundred; percentages are calculated on pre-rounded data.

4) '-' Indicates a base value of less than fifty or a percentage of less than 0.5%.

5) Figures for 2008/09 are not directly comparable to earlier years as the introduction of demand led funding has changed how data is collected and how funded learners are defined from 2008/09 onwards. More information on demand led funding is available at <http://www.thedataservice.org.uk/dataictionary/businessdefinitions/Demand+Led+Funding.htm>.

6) To allow for comparison between different data sources, tables use age as at 31 August of the academic year for all provision. These tables include learners under 19, including a small number of under 16 year olds.

7) Full-year numbers are a count of the number of learners that participated/achieved at any point during the year. Learners undertaking/achieving more than one course will appear only once in the 'total learners' category for each data collection. However, learners that are included in different data collections, whether that relates to different years or different funding streams, will be counted more than once. All learners undertaking/achieving a full level 2 or 3 qualification will also appear in the level 2 or level 3 category, respectively.

8) Success rates are calculated as the number of learning aims achieved divided by the number of learning aims expected to complete, excluding any learners who transferred on to another learning aim within the same institution.

9) Apprenticeship success rates are based on the number of learners who meet all of the requirements of their apprenticeship framework, divided by the number of learners who have left training or successfully completed their training in the academic year.

10) Apprenticeship success rates are not affected by demand led funding.

11) Table 3.2 reports on the actual number of achievements within the academic year without reference to those which were expected to complete. Table 3.3 reports success rates which are based on the reported achievement of individual aims that were expected to complete in the academic year.

12) FE and Skills participation figures for 2009/10 are available in tables 13-15 of this release.

13) Funded learners in this table are those learners that were funded by the Learning and Skills Council and/or are now funded by the Skills Funding Agency or Young People's Learning Agency.

14) Further breakdowns of the data are available at the Data Service website: www.thedataservice.org.uk/statistics.

Table 4: Demographic Summary of FE and Skills Participation by Funding Stream and Level (2008/09) - Learner Volumes

	Funded Learners ⁸																		
	Apprenticeships				Learner Responsive (LR)					University for Industry (Ufi)		Train to Gain (TTG)		Adult Safeguarded Learning (ASL)		Total	%		
	Level 2	Level 3	Total Apprenticeships	%	Below Level 2 (excluding SFL)	Skills For Life (SfL)	Level 2	Level 3	Level 4+	Total LR ⁶	%	Total Ufi	%	Total TTG	%			Total ASL	%
Total Learners	273,600	171,100	444,800	100.0%	694,100	842,100	1,040,200	742,700	40,500	2,376,700	100.0%	189,300	100.0%	982,200	100.0%	792,300	100.0%	1,837,100	100.0%
Age																			
Under 19	129,800	44,100	173,900	39.1%	289,200	397,800	441,100	441,700	1,100	865,700	36.4%	6,200	3.3%	-	-	15,500	2.0%	1,065,900	22.0%
19-24	101,300	90,500	191,800	43.1%	83,100	116,400	141,200	93,900	6,200	324,200	13.6%	33,500	17.7%	151,600	15.4%	53,900	6.8%	764,200	15.8%
25-49	38,700	33,500	72,100	16.2%	224,800	279,200	356,500	162,800	28,000	898,800	37.8%	117,700	62.2%	665,900	67.8%	401,300	50.7%	2,186,900	45.2%
50+	3,900	3,100	7,000	1.6%	94,700	46,200	99,200	43,500	5,300	281,100	11.8%	31,900	16.8%	164,800	16.8%	304,800	38.5%	796,300	16.5%
Unknown	-	-	-	-	2,300	2,500	2,100	700	-	6,900	-	-	-	-	-	16,900	2.1%	23,800	-
Gender																			
Female	132,400	71,400	203,800	45.8%	342,300	451,600	588,100	421,600	26,100	1,317,900	55.5%	93,400	49.4%	464,000	47.2%	595,800	75.2%	2,695,200	55.7%
Male	141,200	99,700	241,000	54.2%	351,800	390,400	452,000	321,100	14,400	1,058,700	44.5%	95,900	50.6%	518,300	52.8%	196,500	24.8%	2,141,900	44.3%
Learners with Learning Difficulties and/or Disabilities																			
Learning Difficulty	31,800	13,100	45,000	10.1%	141,000	151,300	124,800	78,400	2,500	343,800	14.5%	22,900	12.1%	51,200	5.2%	85,900	10.8%	555,800	11.5%
No Learning Difficulty	239,600	156,900	396,500	89.2%	499,200	632,600	846,000	623,700	36,000	1,859,000	78.2%	164,800	87.1%	897,600	91.4%	596,800	75.3%	3,956,900	81.8%
Not Known	2,200	1,100	3,300	0.7%	53,900	58,100	69,500	40,600	2,000	173,900	7.3%	1,500	0.8%	33,400	3.4%	109,700	13.8%	324,300	6.7%
Ethnicity																			
White	251,500	159,500	411,000	92.4%	544,500	576,000	838,300	601,100	35,200	1,831,200	77.0%	146,500	77.4%	809,100	82.4%	644,100	81.3%	3,873,900	80.1%
Mixed	4,300	2,200	6,400	1.4%	18,500	25,100	26,300	20,400	600	60,000	2.5%	4,100	2.1%	11,900	1.2%	9,900	1.2%	93,600	1.9%
Asian or Asian British	8,700	4,700	13,400	3.0%	47,500	104,100	67,700	50,900	1,800	193,400	8.1%	16,000	8.5%	71,800	7.3%	52,200	6.6%	353,200	7.3%
Black or Black British	5,100	2,800	7,800	1.8%	46,000	76,700	63,900	44,000	1,500	159,800	6.7%	17,500	9.3%	52,600	5.4%	29,200	3.7%	274,400	5.7%
Chinese or Other Ethnic Group	1,600	800	2,300	0.5%	14,700	39,500	19,900	12,400	600	65,600	2.8%	4,300	2.3%	16,900	1.7%	18,700	2.4%	110,300	2.3%
Not Known/Not Provided	2,600	1,300	3,800	0.9%	22,900	20,600	24,000	13,800	800	66,700	2.8%	900	-	19,900	2.0%	38,200	4.8%	131,700	2.7%

Notes

- 1) The following data sources have been used; FE - 2008/09 (L05 Final); ER - 2008/09 (E13 Final); ASL - 2008/09 (C05 Final, C04 Final); Ufi - 2008/09 (U05 Final).
- 2) Volumes are rounded to the nearest hundred; percentages are calculated on pre-rounded data.
- 3) '-' Indicates a base value of less than fifty or a percentage of less than 0.5%.
- 4) To allow for comparison between different data sources, tables use age as at 31 August of the academic year for all provision. These tables include learners under 19, including a small number of under 16 year olds.
- 5) Full-year numbers are a count of the number of learners that participated at any point during the year. Learners undertaking more than one course will appear only once in the 'total learners' category for each data collection. However, learners that are included in different data collections will be counted more than once.
- 6) Total Learner Responsive also includes learners on courses with 'No Level Assigned'. Learners undertaking courses at more than one level will be counted once for each applicable level, but only once in Total Learner Responsive. Learners studying a Level 2 Skills for Life qualification will be counted in both the Level 2 and Skills for Life categories, but only once in totals.
- 7) Other Employer Responsive provision that is not apprenticeships or Train to Gain is not shown separately, but is included in the 'Total' column of this table.
- 8) Funded learners in this table are those learners that were funded by the Learning and Skills Council and/or are now funded by the Skills Funding Agency or Young People's Learning Agency.
- 9) Age, gender, learners with learning difficulties and/or disabilities and ethnicity is based upon self-declaration by the learner.
- 10) Further breakdowns of the data are available at the Data Service website: www.thedataservice.org.uk/statistics.

Table 5: FE and Skills - Participation and Achievement by Level and Provision Type (2008/09) – Learner Volumes

Provision Type			Participation	Achievement
			2008/09	2008/09
			Full Year	Full Year
			(final)	(final)
Level				
Total Learners			4,837,100	3,359,700
Total Learners			1,065,900	775,800
Under 19 Further Education Provision			793,900	671,800
	of which	Below Level 2	267,600	210,300
		of which Foundation Learning Tier	246,000	190,200
		Skills for Life	372,400	265,900
Youth		Full Level 2	164,800	110,300
		Full Level 3	327,200	161,800
		No Level Assigned	492,400	347,500
Under 19 Apprentices			173,900	46,100
	of which	Full Level 2	129,800	40,000
		Full Level 3	44,100	6,100
Entry to Employment			78,500	40,200
Total Learners			3,060,100	1,975,800
	of which	Below Level 2	455,300	342,000
		of which Foundation Learning Tier	284,500	204,000
		Skills for Life	692,000	504,800
Adult		Full Level 2	967,500	493,600
		Full Level 3	423,600	170,100
		No Level Assigned / Other TtG	226,300	189,600
Total Learners			1,754,400	1,297,900
	of which	Below Level 2	445,500	336,600
		of which Foundation Learning Tier	274,700	198,700
Adult Learner Responsive		Skills for Life	581,400	406,700
		Full Level 2	139,000	78,900
		Full Level 3	108,600	62,600
		No Level Assigned	226,100	183,500
Total Learners			1,305,700	677,900
Apprenticeships			270,900	97,100
	of which	Full Level 2	143,800	58,000
		Full Level 3	127,000	39,100
Train to Gain (TtG)			957,300	543,000
	of which	Below Level 2	9,800	5,300
		of which Foundation Learning Tier	9,800	5,300
		Skills for Life	110,500	98,100
Employer Responsive		Full Level 2	684,700	356,600
		Full Level 3	188,000	68,400
		No Level Assigned / Other TtG	200	6,200
Other Employer Responsive Programmes			77,600	37,900
Safeguarded Adult Learning			755,000	638,900
	of which	Skills for Life	54,700	46,800
Total Adult Learner and Employer Responsive including Safeguarded Adult Learning			3,771,200	2,584,000

Notes

1) The following data sources have been used; FE - 2008/09 (L05 Final); WBL - 2008/09 (E13 Final); ACL - 2008/09 (C05 Final, C04 Final); UFI - 2008/09 (U05 Final).

2) Further Education Provision includes General Further Education Colleges including Tertiary, Sixth Form Colleges, Special College - Agricultural and Horticultural Colleges and Art and Design Colleges, Specialist Colleges and External Institutions.

3) Volumes are rounded to the nearest hundred.

4) '-' Indicates a base value of less than fifty.

5) To allow for comparison between different data sources, the table uses age as at 31 August of the academic year for all provision. The table include learners under 19, including a small number of under 16 year olds.

6) Full-year numbers are a count of the number of learners that participated at any point during the year. Learners undertaking more than one course will appear only once in the 'total learners' category for each data collection. However, learners that are included in different data collections, whether that relates to different years or different funding streams, will be counted more than once. Where possible learners are not counted more than once in overall Youth and Adult totals.

7) Foundation Learning Tier totals are those aims that are Below Level 2 and approved.

8) Train to Gain No Level Assigned includes SME flexibilities which are thin Level 2 and 3 and Level 2 and 3 units. The Policy for SME flexibilities was introduced in January 2009.

9) FE and Skills participation figures by provision type for 2009/10 are available in table 16 of this release.

10) Further breakdowns of the data are available at the Data Service website: www.thedataservice.org.uk/statistics.

Table 6: FE and Skills - Skills for Life Participation and Achievement by Level (2005/06 to 2008/9) – Learner Volumes

Measure	Level	2005/06	2006/07		2007/08		2008/09 ⁴
		Full Year (final)	Full Year (final)	% change 05/06 to 06/07	Full Year (final)	% change 06/07 to 07/08	Full Year (final)
Participation	Total Learners	1,473,100	1,292,400	-12.3%	1,306,800	1.1%	1,445,800
	of which literacy	1,079,800	876,600	-18.8%	912,900	4.1%	1,014,600
	of which entry level	219,700	160,200	-27.1%	163,400	2.0%	168,900
	of which level 1	388,100	385,000	-0.8%	411,800	6.9%	461,200
	of which level 2	395,600	399,800	1.1%	402,300	0.6%	456,800
	of which numeracy	826,400	711,000	-14.0%	764,100	7.5%	898,600
	of which entry level	135,000	104,200	-22.8%	117,800	13.1%	152,900
	of which level 1	359,100	354,200	-1.4%	382,300	7.9%	439,300
	of which level 2	307,600	308,300	-	323,400	4.9%	378,300
	of which ESOL	266,600	243,900	-8.5%	217,800	-10.7%	211,600
	of which entry level	119,200	202,500	70.0%	186,200	-8.0%	180,800
	of which level 1	28,500	33,600	18.0%	26,300	-21.6%	26,200
	of which level 2	10,100	12,400	22.9%	10,000	-19.2%	10,100
Achievement	Total Learners	1,015,700	819,200	-19.3%	810,800	-1.0%	964,600
	of which literacy	688,800	524,600	-23.8%	528,300	0.7%	614,900
	of which entry level	162,100	115,100	-29.0%	113,300	-1.6%	112,300
	of which level 1	206,500	225,600	9.3%	234,600	4.0%	282,300
	of which level 2	199,500	215,900	8.2%	211,100	-2.2%	253,800
	of which numeracy	483,400	402,200	-16.8%	424,200	5.5%	535,200
	of which entry level	97,200	73,900	-24.0%	77,600	5.1%	99,100
	of which level 1	177,200	207,600	17.2%	216,200	4.1%	271,700
	of which level 2	146,600	147,000	-	159,400	8.4%	199,500
	of which ESOL	219,600	166,000	-24.4%	155,900	-6.1%	151,900
	of which entry level	84,900	138,800	63.4%	134,700	-3.0%	130,800
	of which level 1	16,700	21,800	30.1%	17,000	-21.9%	17,000
	of which level 2	5,300	7,700	46.2%	6,600	-14.6%	6,700
Under 16	Participation	4,900	5,400	10.3%	5,200	-3.2%	4,000
	Achievement	1,600	1,800	12.7%	1,800	-1.6%	1,300

Notes

1) The following data sources have been used; FE - 2007/08 and earlier years (F05 Final), 2008/09 (L05 Final); WBL - 2007/08 and earlier years (W13 Final), 2008/09 (E13 Final); ACL - 2006/07 and earlier years (C03), 2007/08 (C03 Final, C02 Final), 2008/09 (C05 Final, C04 Final); UFI - 2007/08 and earlier years (U05 Final); Employer Training Pilot (ETP) - 2006/07 and earlier years (ETP database).

2) Volumes are rounded to the nearest hundred; percentages are calculated based on pre-rounded data.

3) '-' Indicates a base value of less than fifty or a percentage of less than 0.5%.

4) Figures for 2008/09 are not directly comparable to earlier years as the introduction of demand led funding has changed how data is collected and how funded learners are defined from 2008/09 onwards. More information on demand led funding is available at <http://www.thedataservice.org.uk/datadictionary/businessdefinitions/Demand+Led+Funding.htm>.

5) To allow for comparison between different data sources, the table uses age as at 31 August of the academic year for all provision.

6) Full-year numbers are a count of the number of learners that participated at any point during the year. Learners undertaking more than one course will appear only once in the 'total learners' category for each data collection. However, learners that are included in different data collections relate to different years or different funding streams, will be counted more than once.

7) Skills for Life participation figures for 2009/10 are available in table 17 of this release.

8) Further breakdowns of the data are available at the Data Service website: www.thedataservice.org.uk/statistics.

Table 7: Adult Community Learning (2005/06 to 2007/08) and Adult Safeguarded Learning (2008/09) Participation and Achievement by Type – Learner Volumes

Measure	Provision Type	Funded Learners					2008/09 ¹
		2005/06	2006/07		2007/08		
		Full Year (final)	Full Year (final)	% change 05/06 to 06/07	Full Year (final)	% change 06/07 to 07/08	Full Year (final)
Participation	Total Learners	765,700	796,700	4.0%	800,300	-	835,600
	of which Personal and Community Development Learning		546,800		557,900	2.0%	584,400
	of which Neighbourhood Learning in Deprived Communities		23,900		32,200	34.7%	40,300
	of which Family Literacy Language and Numeracy		68,800		67,100	-2.4%	71,000
	of which Wider Family Learning		70,000		75,300	7.6%	80,500
	of which First Steps				116,000		90,300
Achievement	Total Learners	618,600	653,800	5.7%	686,500	5.0%	704,700
	of which Personal and Community Development Learning		449,800		477,000	6.0%	489,000
	of which Neighbourhood Learning in Deprived Communities		20,800		28,400	36.3%	34,400
	of which Family Literacy Language and Numeracy		57,500		57,200	-0.6%	61,000
	of which Wider Family Learning		57,800		67,300	16.5%	71,400
	of which First Steps				95,200		73,100

Notes

1) The following data sources have been used; ACL - 2006/07 and earlier years (C03 Final), 2007/08 (C03 Final, C02 Final), 2008/09 (C05 Final, C04 Final); FE - 2007/08 and earlier years (F05 Final), 2008/09 (L05 Final).

2) Volumes are rounded to the nearest hundred; percentages are calculated based on pre-rounded data.

3) '-' Indicates a base value of less than 50 or a percentage of less than 0.5%

4) Figures for 2008/09 are not directly comparable to earlier years as the introduction of demand led funding has changed how data is collected and how funded learners are defined from 2008/09 onwards. More information on demand led funding is available at <http://www.thedataservice.org.uk/datadictionary/businessdefinitions/Demand+Led+Funding.htm>.

5) Total Learners includes learners participating in and achieving ASL provision in the FE funding stream for 2005/06 to 2007/08, and learners participating in and achieving First Steps provision in the Learner Responsive funding stream for 2008/09. Totals are higher than in the ACL/ASL funding stream table published in this release, due to including these additional learners.

6) Provision type figures are only shown for years where provision type can be accurately determined for all learners. ACL learners in 2005/06 cannot be accurately categorised. First Steps learners in 2006/07 cannot be accurately categorised, but other ASL provision types can be identified including those recorded in the FE funding stream. All ASL provision types can be accurately categorised in 2007/08 onwards, including those recorded in the FE funding stream.

7) There were 7,900 participating and 6,400 achieving learners with ASL aims in the 2008/09 Learner Responsive funding stream that are not included in these figures. The only ASL provision included for 2008/09 is recorded in the ASL funding stream.

8) Full-year numbers are a count of the number of learners that participated/achieved at any point during the year. Learners undertaking/achieving more than one course will appear only once in the 'total learners' category for each data collection. However, learners that are included in different data collections, whether that relates to different years or different funding streams, will be counted more than once.

9) Funded learners in this table are those learners that were funded by the Learning and Skills Council and/or are now funded by the Skills Funding Agency or Young People's Learning Agency.

10) Adult Safeguarded Learning participation figures for 2009/10 are available in table 18 of this release.

Table 8.1: Apprenticeship Programme Starts by Level and Age (2005/06 to 2008/09)

Age	2005/06	2006/07	2007/08	2008/09	2007/08				2008/09			
	Full Year (final)	Full Year (final)	Full Year (final)	Full Year (final)	Quarter 1 (final)	Quarter 2 (final)	Quarter 3 (final)	Quarter 4 (final)	Quarter 1 (final)	Quarter 2 (final)	Quarter 3 (final)	Quarter 4 (final)
Apprenticeship (level 2)												
Under 16	500	500	500	300	100	-	-	400	100	-	-	200
16-18	76,600	80,300	81,500	73,800	39,700	13,900	13,600	14,400	36,900	13,300	11,300	12,300
19-24	45,600	46,500	55,200	52,600	16,300	10,700	14,900	13,200	18,000	12,000	12,800	9,800
25+	100	100	14,600	31,700	800	1,400	4,100	8,300	9,900	8,700	8,500	4,600
Total	122,800	127,400	151,800	158,500	56,900	26,000	32,600	36,200	64,900	34,000	32,600	27,000
Advanced Apprenticeship (level 3)												
Under 16	-	-	-	-	-	-	-	-	-	-	-	-
16-18	22,400	24,800	25,500	25,100	14,800	3,900	3,200	3,600	15,400	3,200	2,900	3,600
19-24	29,500	32,000	34,800	32,000	12,300	6,400	8,600	7,500	13,400	6,500	6,700	5,400
25+	200	100	12,600	24,200	900	1,300	3,900	6,500	8,400	6,100	6,100	3,500
Total	52,100	56,900	72,900	81,300	28,000	11,600	15,800	17,500	37,300	15,800	15,700	12,500
Higher Level Apprenticeship (level 4+)												
Under 16	-	-	-	-	-	-	-	-	-	-	-	-
16-18	-	-	-	-	-	-	-	-	-	-	-	-
19-24	-	100	-	100	-	-	-	-	-	-	-	100
25+	-	-	-	-	-	-	-	-	-	-	-	-
Total	-	100	100	200	100	-	-	-	100	-	-	100
All Apprenticeships												
Under 16	500	500	500	400	100	-	-	400	100	-	-	300
16-18	99,000	105,100	107,000	99,000	54,500	17,800	16,800	18,000	52,300	16,400	14,300	15,900
19-24	75,200	78,600	90,100	84,700	28,700	17,200	23,600	20,600	31,500	18,500	19,500	15,200
25+	300	300	27,200	55,900	1,600	2,700	8,000	14,700	18,300	14,900	14,600	8,100
Total	175,000	184,400	224,800	239,900	84,900	37,600	48,400	53,800	102,300	49,800	48,300	39,500

Table 8.2: Apprenticeship Framework Achievements by Level and Age (2005/06 to 2008/09)

Age	2005/06	2006/07	2007/08	2008/09	2007/08				2008/09			
	Full Year (final)	Full Year (final)	Full Year (final)	Full Year (final)	Quarter 1 (final)	Quarter 2 (final)	Quarter 3 (final)	Quarter 4 (final)	Quarter 1 (final)	Quarter 2 (final)	Quarter 3 (final)	Quarter 4 (final)
Apprenticeship (level 2)												
Under 16	400	400	300	300	100	-	100	100	100	-	100	200
16-18	44,600	49,700	46,800	49,900	10,700	8,200	9,100	18,800	11,600	8,300	9,100	20,900
19-24	25,300	28,200	28,400	35,500	6,300	5,500	6,500	10,000	7,500	7,000	8,400	12,600
25+	-	100	900	12,500	-	-	200	600	900	1,900	3,300	6,300
Total	70,300	78,400	76,300	98,100	17,000	13,800	15,800	29,600	20,100	17,300	20,900	39,900
Advanced Apprenticeship (level 3)												
Under 16	100	100	-	-	-	-	-	-	-	-	-	-
16-18	13,900	15,500	16,200	17,500	3,600	3,000	3,300	6,300	4,000	2,800	3,600	7,100
19-24	14,300	17,800	19,700	22,400	4,500	3,700	4,300	7,200	5,400	4,300	4,800	7,900
25+	100	100	300	5,400	-	-	100	200	300	500	1,200	3,300
Total	28,400	33,400	36,200	45,200	8,100	6,700	7,600	13,700	9,700	7,600	9,600	18,300
Higher Level Apprenticeship (Level 4+)												
Under 16	-	-	-	-	-	-	-	-	-	-	-	-
16-18	-	-	-	-	-	-	-	-	-	-	-	-
19-24	-	-	-	-	-	-	-	-	-	-	-	-
25+	-	-	-	-	-	-	-	-	-	-	-	-
Total	-	-	-	-	-	-	-	-	-	-	-	-
All Apprenticeships												
Under 16	500	500	300	300	100	-	100	100	100	-	100	200
16-18	58,500	65,200	63,000	67,300	14,300	11,200	12,300	25,200	15,600	11,100	12,700	27,900
19-24	39,600	46,000	48,100	57,800	10,800	9,300	10,800	17,200	12,900	11,300	13,200	20,500
25+	100	200	1,200	17,900	-	100	200	800	1,200	2,500	4,600	9,600
Total	98,700	111,800	112,600	143,400	25,200	20,600	23,500	43,400	29,800	24,900	30,500	58,100

Notes

- 1) The following data sources have been used; Work-based learning (WBL) – 2007/08 and earlier years (W13 final), 2008/09 (E13 final).
- 2) Volumes are rounded to the nearest hundred.
- 3) '-' Indicates a base value of less than fifty.
- 4) Unlike learner figures in earlier tables, figures for 2008/09 are comparable with earlier years as demand led funding rules are not applied to starts and achievements.
- 5) Age is calculated based on age at start of the programme rather than based on 31 August.
- 6) In Table 8.1 full-year numbers are a count of the number of starts at any point during the year. Learners starting more than one framework will appear more than once.
- 7) In Table 8.2 full-year numbers are a count of the number of framework achievements at any point during the year. Learners achieving more than one framework will appear more than once.
- 8) Programme-Led Apprenticeships recorded in WBL ILR returns are included in the above figures.
- 9) In order to be counted as a successful achievement, all elements of the framework must have been achieved.
- 10) Quarter 1 - 1 August to 31 October; Quarter 2 - 1 November to 31 January; Quarter 3 - 1 February to 30 April; Quarter 4 - 1 May to 31 July.
- 11) Apprenticeship starts and achievements figures for 2009/10 are available in table 19 of this release.
- 12) Further breakdowns of the data are available at the Data Service website: www.thedataservice.org.uk/statistics.

Table 9.1: Train to Gain Starts by Level (2005/06 to 2008/09)

Level	2005/06	2006/07	2007/08	2008/09 ⁴	2007/08				2008/09 ⁴			
	April to July 2006 (final)	Full year (final)	Full Year (final)	Full Year (final)	Quarter 1 (final)	Quarter 2 (final)	Quarter 3 (final)	Quarter 3 (final)	Quarter 1 (final)	Quarter 2 (final)	Quarter 3 (final)	Quarter 4 (final)
Foundation Learning Tier	-	-	-	8,100	-	-	-	-	2,000	1,700	2,700	1,700
Full Level 2	27,700	172,400	263,900	516,900	57,200	59,300	70,500	76,900	120,800	128,200	174,200	93,600
Other Level 2	-	-	-	1,700	-	-	-	-	-	200	1,100	400
Full Level 3	500	14,600	43,000	135,000	8,100	8,200	11,700	15,000	39,900	32,800	40,900	21,400
Other Level 3	-	-	-	400	-	-	-	-	-	100	300	100
Level 4 and above	-	-	-	11,700	-	-	-	-	4,100	2,700	3,300	1,500
Skills for Life	3,500	19,300	39,200	143,400	7,600	7,800	10,700	13,100	31,900	38,400	50,300	22,800
No Level Assigned	700	100	-	300	-	-	-	-	100	-	100	-
Total	32,400	206,300	346,200	817,400	72,900	75,300	92,900	105,100	198,800	204,100	272,900	141,500

Table 9.2: Train to Gain Achievements by Level (2005/06 to 2008/09)

Level	2005/06	2006/07	2007/08	2008/09 ⁴	2007/08				2008/09 ⁴			
	April to July 2006 (final)	Full year (final)	Full Year (final)	Full Year (final)	Quarter 1 (final)	Quarter 2 (final)	Quarter 3 (final)	Quarter 4 (final)	Quarter 1 (final)	Quarter 2 (final)	Quarter 3 (final)	Quarter 4 (final)
Foundation Learning Tier	-	-	-	5,300	-	-	-	-	900	1,000	1,400	2,000
Full Level 2	5,000	60,400	153,400	356,700	28,500	32,200	41,500	51,200	58,900	70,700	94,500	132,600
Other Level 2	-	-	-	900	-	-	-	-	-	-	100	700
Full Level 3	700	2,600	14,100	68,400	1,600	2,700	3,700	6,100	8,200	11,600	16,200	32,500
Other Level 3	-	-	-	200	-	-	-	-	-	-	-	100
Level 4 and above	-	-	-	7,300	-	-	-	-	1,100	1,400	1,700	3,100
Skills for Life	700	7,800	19,000	98,100	2,800	3,400	5,300	7,500	10,500	19,000	32,000	36,600
No Level Assigned	-	300	100	6,200	-	-	-	-	1,500	1,700	1,500	1,500
Total	6,500	71,100	186,500	543,100	32,900	38,300	50,500	64,800	81,100	105,300	147,500	209,200

ETP Achievements	2005/06 April to July 2006 (final)	2006/07 Full year (final)
Full Level 2	22,600	16,200
Skills for Life	4,600	1,800
Total	27,200	18,000

Total with ETP **33,700** **89,100**

Notes

1) The following data sources have been used; Work-based learning (WBL) – 2007/08 and earlier years (W13 final), 2008/09 (E13 final), Employer Training Pilot (ETP) - 2006/07 and earlier years (ETP database).

2) Volumes are rounded to the nearest hundred.

3) '-' Indicates a base value of less than fifty or 'not applicable'.

4) Demand led funding rules are not applied to starts and achievements. However, figures for 2008/09 are not comparable with earlier years as in 2008/09 NVQs delivered in the workplace previously funded by FE are now funded by Train to Gain. There were 181,000 starts and 132,000 achievements in NVQs delivered in the workplace in 2007/08 (Source - FE 2007/08 F05 Final).

5) In Table 9.1 full-year numbers are a count of the number of starts at any point during the year. Learners starting more than one course will appear more than once.

6) In Table 9.2 full-year numbers are a count of the number of achievements at any point during the year. Learners achieving more than one course will appear more than once.

7) Data for NVQs delivered in the workplace by FE organisations are included in the figures for 2008/09.

8) 'Other Level 2' and 'Other Level 3' qualifications includes learners starting Train to Gain courses accessed through new funding flexibilities. These include thin Level 2 and 3, and Level 2 and 3 units, for 2008/09 only. These were made available from January 2009.

9) Table 9.2 includes Employer Training Pilot data from April 2006 onwards.

10) Quarter 1 - 1 August to 31 October; Quarter 2 - 1 November to 31 January; Quarter 3 - 1 February to 30 April; Quarter 4 - 1 May to 31 July.

11) Train to Gain starts and achievements figures for 2009/10 are available in table 20 of this release.

12) Further breakdowns of the data are available at the Data Service website: www.thedataservice.org.uk/statistics.

Table 10.1: Level of Highest Qualification Held by People aged 19-59/64 in England (Quarter 4)^{1, 2, 3, 4} - percentages

Year	All people aged 19-59/64 ⁵ (thousands)	Level 4 and above	Level 3	Level 3 and above	Level 2	Level 2 and above	Below Level 2 (incl no qualifications)
2006	29,417	32.2 ^P	20.1	52.3	19.4	71.7	28.3
2007	29,566	33.3 ^P	20.6 ^P	53.9 ^P	19.0 ^P	73.0 ^P	27.0 ^P
2008	29,736	33.6 ^P	20.8	54.4	19.5	73.9	26.1
2009	29,930	35.3 ^P	20.6 ^P	55.9 ^P	19.7 ^P	75.6 ^P	24.4 ^P
2009 95% CI (+/-)		0.42		0.41		0.36	0.36

Table 10.2: Level of Highest Qualification Held by People aged 19-59/64 in England (Quarter 4)^{1, 2, 3, 4} - volumes (thousands)

Year	All people aged 19-59/64 ⁵	Level 4 and above	Level 3	Level 3 and above	Level 2	Level 2 and above	Below Level 2 (incl no qualifications)
2006	29,417	9,467 ^P	5,915	15,382	5,703	21,085	8,332
2007	29,566	9,839 ^P	6,102 ^P	15,941 ^P	5,630 ^P	21,571 ^P	7,995 ^P
2008	29,736	9,985 ^P	6,179	16,164	5,799	21,963	7,773
2009	29,930	10,557 ^P	6,166 ^P	16,723 ^P	5,905 ^P	22,628 ^P	7,302 ^P
2009 95% CI (+/-)		125		135		136	102

Notes

1. Estimates were revised in March 2010 as a result of an improved methodology being adopted - see methodological note for further details.
2. 2009 estimates are provisional as 2010 LFS data and matched LFS-ILR data are not yet available; uplift to final results is estimated based on 2006 to 2008 data.
3. 2007 estimates are provisional as matched LFS-ILR data are not yet available for this year; uplift to final results is based on 2006 and 2008 data.
4. Estimates of percentage qualified to Level 4 and above are provisional pending finalisation of research into matched LFS-HESA data - see methodological note for further details.
5. Males aged 19 - 64 and females aged 19 - 59.
- P. Provisional estimate - these estimates will be finalised in March 2011.

Table 11.1: Level Of Highest Qualification Held By Economically Active Adults In England (Quarter 4)^{1, 2, 3} - percentages

Year	Economically active adults⁵ (thousands)	Level 2 and above	Below Level 2 (incl no qualifications)
2001	23,259	69.2 ⁴	30.8 ⁴
2006	24,233	74.0 ⁴	26.0 ⁴
2006	24,233	76.0	24.0
2007	24,389	77.1 ^P	22.9 ^P
2008	24,682	77.8	22.2
2009	24,691	78.9 ^P	21.1 ^P
2009 95% CI (+/-)		0.37	0.37

Table 11.2: Level Of Highest Qualification Held By Economically Active Adults In England (Quarter 4)^{1, 2, 3} - volumes (thousands)

Year	Economically active adults⁵	Level 2 and above	Below Level 2 (incl no qualifications)
2001	23,259	16,098 ⁴	7,161 ⁴
2006	24,233	17,933 ⁴	6,300 ⁴
2006	24,233	18,423	5,810
2007	24,389	18,814 ^P	5,575 ^P
2008	24,682	19,201	5,481
2009	24,691	19,483 ^P	5,208 ^P
2009 95% CI (+/-)		117	85

Notes

1. Estimates for 2006 onwards were revised in March 2010 as a result of an improved methodology being adopted - see methodological note for further details.
 2. 2009 estimates are provisional as 2010 LFS data and matched LFS-ILR data are not yet available; uplift to final results is estimated based on 2006 to 2008 data.
 3. 2007 estimates are provisional as matched LFS-ILR data are not yet available for this year; uplift to final results is based on 2006 and 2008 data.
 4. The best estimate of change between 2001 and 2006 currently available is using the previous methodology - see methodological note for further details.
 5. Economically active adults are defined as men aged 18 to 64 and women aged 18 to 59 either in employment or International Labour Organisation unemployed.
- P. Provisional estimate - these estimates will be finalised in March 2011.

Table 12: Vocational Qualification Achievements in the UK by Qualification Type, 2005/06 (Quarter 4) to 2010 (Quarter 3)

Year	Quarter	National Vocational Qualification	Occupational Qualification	Qualifications and Credit Framework Qualification	Vocationally Related Qualification	Other Vocational Qualifications	Total
2005	Quarter 4	126,600	5,800	-	426,200	256,000	814,500
2006	Quarter 1	116,300	6,100	-	432,700	230,800	786,000
2006	Quarter 2	121,000	6,100	-	482,500	405,000	1,014,700
2006	Quarter 3	234,600	7,000	-	750,200	610,600	1,602,500
2006	Quarter 4	121,300	7,100	-	411,400	249,600	789,400
2007	Quarter 1	126,600	5,700	-	406,800	251,400	790,500
2007	Quarter 2	129,600	6,000	400	507,900	434,100	1,078,000
2007	Quarter 3	252,900	8,000	500	920,500	773,800	1,955,700
2007	Quarter 4	128,700	4,900	1,300	408,500	280,100	823,400
2008	Quarter 1	140,700	4,900	4,600	426,000	345,100	921,300
2008	Quarter 2	170,600	6,400	8,600	643,100	474,900	1,303,700
2008	Quarter 3	287,900	8,300	19,200	984,000	983,700	2,283,000
2008	Quarter 4	164,100	5,800	19,400	416,200	303,400	908,900
2009	Quarter 1	169,600	5,300	42,200	409,900	390,200	1,017,200
2009	Quarter 2	216,400	6,300	65,000	715,900	486,000	1,489,600
2009	Quarter 3	372,600	9,100	102,000	1,064,900	1,143,300	2,692,000
2009	Quarter 4	212,000	6,000	85,000	414,000	318,600	1,035,600
2010	Quarter 1	203,900	5,100	135,000	386,300	352,300	1,082,700
2010	Quarter 2	213,400	5,700	202,700	726,100	690,100	1,838,000
2010	Quarter 3	327,300	6,400	337,900	1,067,100	1,588,300	3,327,100

Notes

- 1) This table covers all levels of vocational qualifications reported through Ofqual.
- 2) All figures are rounded to the nearest hundred.
- 3) '-' Indicates a base value of less than fifty.
- 4) Data are supplied by awarding organisations.
- 5) Annual data are for academic years of October to September. Quarter 1 (October to December), Quarter 2 (January to March), Quarter 3 (April to June) and Quarter 4 (July to September).
- 6) Key Skills data was not collected prior to Quarter 4 2009.
- 7) 'Other Vocational Qualifications' includes Basic Skills, Entry Level, English for Speakers Other Languages, Functional Skills, Free-Standing Mathematics Qualification, Key Skills, National Qualifications Framework and Other General types.

Table 13: Young People (Under 19s) FE and Apprenticeship Participation by Level (2009/10) – Learner Volumes

		Funded Learners⁷
		2009/10
		Full Year
		(provisional)
Level		
Total Learners		1,093,300
Participation	of which...	
	Below Level 2 (excluding Skills for Life)	307,300
	Skills for Life	519,700
	Full Level 2	314,800
	Full Level 3	<u>397,300</u>
	Level 2	593,200
	Level 3	509,600
	Level 4+	1,000
	No Level Assigned	<u>604,400</u>

Notes

1) The following data sources have been used; LR - 2009/10 (L04 Final); ER - 2009/10 (E12, 06/08/10); ASL - 2009/10 (C04 27/09/10); UFI - 2009/10 (U04 27/09/10).

2) These tables include Apprenticeships, Train to Gain, University for Industry, Adult Safeguarded Learning and Further Education/Learner Responsive Provision which includes General Further Education Colleges including Tertiary, Sixth Form Colleges, Special College - Agricultural and Horticultural Colleges and Art and Design Colleges, Specialist Colleges and External Institutions.

3) Volumes are rounded to the nearest hundred.

4) '-' Indicates a base value of less than fifty.

5) To allow for comparison between different data sources, tables use age as at 31 August of the academic year for all provision. These tables include learners under 19, including a small number of under 16 year olds.

6) Learners undertaking more than one course will appear only once in the 'total learners' category for each data collection. However, learners that are included in different data collections will be counted more than once. All learners undertaking a full level 2 or 3 qualification will also appear in the level 2 or level 3 category, respectively.

7) Funded learners in this table are those learners that were funded by the Learning and Skills Council and/or are now funded by the Skills Funding Agency or Young People's Learning Agency.

8) This table shows provisional estimates for 2009/10. Tables 1-3 show full year volumes for previous years. It is not possible to directly compare provisional 2009/10 estimates with figures for previous years.

9) Further breakdowns of the data are available at the Data Service website: www.thedataservice.org.uk/statistics.

Table 14: Adult (19+) FE and Skills Participation by Level (2009/10) – Learner Volumes

		Funded Learners⁷
		2009/10
		Full Year
		(provisional)
Level		
Total Learners		3,514,300
Participation	<i>of which...</i>	
	Below Level 2 (excluding Skills for Life)	432,000
	Skills for Life	908,900
	Full Level 2	974,600
	Full Level 3	<u>467,900</u>
	Level 2	1,454,100
	Level 3	604,000
	Level 4+	43,200
	No Level Assigned	<u>920,400</u>

Notes

1) The following data sources have been used; LR - 2009/10 (L04 Final); ER - 2009/10 (E12, 06/08/10); ASL - 2009/10 (C04 27/09/10); UFI - 2009/10 (U04 27/09/10).

2) These tables include Apprenticeships, Train to Gain, University for Industry, Adult Safeguarded Learning and Further Education/Learner Responsive Provision which includes General Further Education Colleges including Tertiary, Sixth Form Colleges, Special College - Agricultural and Horticultural Colleges and Art and Design Colleges, Specialist Colleges and External Institutions.

3) Volumes are rounded to the nearest hundred.

4) '-' Indicates a base value of less than fifty.

5) To allow for comparison between different data sources, tables use age as at 31 August of the academic year for all provision.

6) Learners undertaking more than one course will appear only once in the 'total learners' category for each data collection. However, learners that are included in different data collections will be counted more than once. All learners undertaking a full level 2 or 3 qualification will also appear in the level 2 or level 3 category, respectively.

7) Funded learners in this table are those learners that were funded by the Learning and Skills Council and/or are now funded by the Skills Funding Agency or Young People's Learning Agency.

8) This table shows provisional estimates for 2009/10. Tables 1-3 show full year volumes for previous years. It is not possible to directly compare provisional 2009/10 estimates with figures for previous years.

9) Further breakdowns of the data are available at the Data Service website: www.thedataservice.org.uk/statistics.

Table 15: Overall FE and Skills Participation by Level (2009/10) – Learner Volumes

		Funded Learners⁷
		2009/10
		Full Year
		(provisional)
Level		
Total Learners		4,607,500
Participation	of which...	
	Below Level 2 (excluding Skills for Life)	739,400
	Skills for Life	1,428,600
	Full Level 2	1,289,400
	Full Level 3	<u>865,200</u>
	Level 2	2,047,400
	Level 3	1,113,600
	Level 4+	44,200
	No Level Assigned	<u>1,524,700</u>

Notes

1) The following data sources have been used; LR - 2009/10 (L04 Final); ER - 2009/10 (E12, 06/08/10); ASL - 2009/10 (C04 27/09/10); UFI - 2009/10 (U04 27/09/10).

2) These tables include Apprenticeships, Train to Gain, University for Industry, Adult Safeguarded Learning and Further Education/Learner Responsive Provision which includes General Further Education Colleges including Tertiary, Sixth Form Colleges, Special College - Agricultural and Horticultural Colleges and Art and Design Colleges, Specialist Colleges and External Institutions.

3) Volumes are rounded to the nearest hundred.

4) '-' Indicates a base value of less than fifty.

5) To allow for comparison between different data sources, tables use age as at 31 August of the academic year for all provision. These tables include learners under 19, including a small number of under 16 year olds.

6) Learners undertaking more than one course will appear only once in the 'total learners' category for each data collection. However, learners that are included in different data collections will be counted more than once. All learners undertaking a full level 2 or 3 qualification will also appear in the level 2 or level 3 category, respectively.

7) Funded learners in this table are those learners that were funded by the Learning and Skills Council and/or are now funded by the Skills Funding Agency or Young People's Learning Agency.

8) This table shows provisional estimates for 2009/10. Tables 1-3 show full year volumes for previous years. It is not possible to directly compare provisional 2009/10 estimates with figures for previous years.

9) Further breakdowns of the data are available at the Data Service website: www.thedataservice.org.uk/statistics.

Table 16: FE and Skills - Participation by Level and Provision Type (2009/10) – Learner Volumes

Provision Type		Participation
		2009/10 ¹¹
Level		Full Year (provisional)
Total Learners		4,607,500
Total Learners		1,093,300
Under 19 Further Education Provision		818,200
Youth	of which	
	Below Level 2	277,100
	of which Foundation Learning Tier	260,600
	Skills for Life	383,900
	Full Level 2	174,700
	Full Level 3	351,800
	No Level Assigned	516,700
	Under 19 Apprentices	184,600
	of which	
	Full Level 2	139,200
Full Level 3	45,500	
Entry to Employment		82,700
Total Learners		2,847,900
Adult	of which	
	Below Level 2	380,400
	of which Foundation Learning Tier	275,300
	Skills for Life	627,700
	Full Level 2	971,100
	Full Level 3	467,400
	No Level Assigned / Other TiG	221,900
	Total Learners	1,560,000
	of which	
	Below Level 2	375,000
of which Foundation Learning Tier	269,900	
Skills for Life	556,700	
Full Level 2	190,300	
Full Level 3	147,900	
No Level Assigned	221,900	
Total Learners		1,287,900
Apprenticeships		304,700
of which		
Full Level 2	164,400	
Full Level 3	140,300	
Train to Gain (TiG)		851,100
of which		
Below Level 2	5,500	
of which Foundation Learning Tier	5,500	
Skills for Life	71,000	
Full Level 2	616,400	
Full Level 3	179,100	
No Level Assigned / Other TiG	-	
Other Employer Responsive Programmes	132,100	
Safeguarded Adult Learning		699,300
of which		
Skills for Life	52,700	
Total Adult Learner and Employer Responsive including Safeguarded Adult Learning		3,514,300

Notes

1) The following data sources have been used; LR - 2009/10 (L04 Final); ER - 2009/10 (E12 06/08/10); ASL - 2009/10 (C04 27/09/10); UFI - 2009/10 (U04 27/09/10).

2) Further Education Provision includes General Further Education Colleges including Tertiary, Sixth Form Colleges, Special College - Agricultural and Horticultural Colleges and Art and Design Colleges, Specialist Colleges and External Institutions.

3) Volumes are rounded to the nearest hundred.

4) '-' Indicates a base value of less than fifty.

5) To allow for comparison between different data sources, tables use age as at 31 August of the academic year for all provision. These tables include learners under 19, including a small number of under 16 year olds.

6) Full-year numbers are a count of the number of learners that participated at anypoint during the year. Learners undertaking more than one course will appear only once in the 'total learners' category for each data collection. However, learners that are included in different data collections, whether that relates to different years or different funding streams, will be counted more than once. Where possible learners are not counted more than once in overall Youth and Adult totals.

7) Foundation Learning Tier totals are those aims that are Below Level 2 and approved.

8) Train to Gain No Level Assigned includes SME flexibilities which are thin Level 2 and 3 and Level 2 and 3 units. The Policy for SME flexibilities was introduced in January 2009.

9) This table shows provisional estimates for 2009/10. FE and Skills participation and achievement figures by provision type for 2008/09 are available in table 5 of this release.

10) Further breakdowns of the data are available at the Data Service website: www.thedataservice.org.uk/statistics.

11) This table shows provisional estimates for 2009/10. Tables 1-9 show full year volumes for previous years. It is not possible to directly compare provisional 2009/10 estimates with figures for previous years.

Table 17: FE and Skills - Skills for Life Participation by Level (2009/10) – Learner Volumes

Measure	Level	2009/10 Full Year (provisional)
	Total Learners	1,424,700
	of which literacy	958,400
	of which entry level	151,400
	of which level 1	422,500
	of which level 2	436,800
Participation	of which numeracy	876,000
	of which entry level	149,300
	of which level 1	419,000
	of which level 2	364,500
	of which ESOL	201,300
	of which entry level	169,900
	of which level 1	26,500
	of which level 2	10,400
Under 16	Participation	3,900

Notes

1) The following data sources have been used; LR - 2009/10 (L04 Final); ER - 2009/10 (E12 06/08/10); ASL - 2009/10 (C04 27/09/10); UFI - 2009/10 (U04 27/09/10).

2) Volumes are rounded to the nearest hundred.

3) '-' Indicates a base value of less than fifty.

4) To allow for comparison between different data sources, tables use age as at 31 August of the academic year for all provision.

5) Full-year numbers are a count of the number of learners that participated at any point during the year. Learners undertaking more than one course will appear only once in the 'total learners' category for each data collection. However, learners that are included in different data collections will be counted more than once.

6) This table shows provisional estimates for 2009/10. Skills for Life participation and achievement figures for earlier years are available in table 6 of this release.

7) Further breakdowns of the data are available at the Data Service website: www.thedataservice.org.uk/statistics.

8) This table shows provisional estimates for 2009/10. Tables 1-9 show full year volumes for previous years. It is not possible to directly compare provisional 2009/10 estimates with figures for previous years.

Table 18: Adult Safeguarded Learning (2009/10) Participation by Type – Learner Volumes

Measure	Provision Type	Funded Learners
		2009/10 Full Year (provisional)
	Total Learners	777,900
Participation	of which Personal and Community Development Learning	536,700
	of which Neighbourhood Learning in Deprived Communities	40,200
	of which Family Literacy Language and Numeracy	67,800
	of which Wider Family Learning	74,300
	of which First Steps	86,100

Notes

- 1) The following data sources have been used; ASL - 2009/10 (C04 27/09/10); LR - 2009/10 (L04 Final).
- 2) Volumes are rounded to the nearest hundred.
- 3) '-' Indicates a base value of less than 50.
- 4) Total Learners includes learners participating in First Steps provision in the Learner Responsive funding stream. Totals are higher than in the ACL/ASL funding stream table published in this release, due to including these additional learners.
- 5) There are 11,600 participating learners with ASL aims in the 2009/10 Learner Responsive funding stream that are not included in these figures. The only ASL provision included for 2009/10 is recorded in the ASL funding stream.
- 6) Full-year numbers are a count of the number of learners that participated at any point during the year. Learners undertaking more than one course will appear only once in the 'total learners' category for each data collection. However, learners that are included in different data collections will be counted more than once.
- 7) Funded learners in this table are those learners that were funded by the Learning and Skills Council and/or are now funded by the Skills Funding Agency or Young People's Learning Agency.
- 8) Adult Safeguarded Learning participation and achievement figures for earlier years are available in table 7 of this release.

Table 19.1: Apprenticeship Programme Starts by Level and Age (2009/10)

	Age	2009/10				
		Full Year (provisional)	Quarter 1 (provisional)	Quarter 2 (provisional)	Quarter 3 (provisional)	Quarter 4 (provisional)
Apprenticeship (level 2)	Under 16	300	100	-	-	200
	16-18	86,800	35,500	15,500	19,400	16,300
	19-24	71,700	20,200	16,300	17,200	18,000
	25+	28,200	7,700	5,600	8,200	6,700
	Total	187,000	63,600	37,300	44,800	41,300
Advanced Apprenticeship (level 3)	Under 16	-	-	-	-	-
	16-18	26,800	14,500	3,400	4,900	3,900
	19-24	38,700	14,900	7,000	8,600	8,200
	25+	20,000	5,700	3,300	6,000	5,000
	Total	85,400	35,100	13,600	19,600	17,100
Higher Level Apprenticeship (Level 4+)	Under 16	-	-	-	-	-
	16-18	100	100	-	-	-
	19-24	1,200	600	200	300	100
	25+	100	100	-	-	-
	Total	1,500	700	300	300	100
All Apprenticeships	Under 16	300	100	-	-	200
	16-18	113,700	50,100	18,800	24,400	20,300
	19-24	111,500	35,700	23,500	26,100	26,300
	25+	48,300	13,500	8,800	14,200	11,700
	Total	273,900	99,400	51,200	64,700	58,600

Table 19.2: Apprenticeship Framework Achievements by Level and Age (2009/10)

	Age	2009/10				
		Full Year (provisional)	Quarter 1 (provisional)	Quarter 2 (provisional)	Quarter 3 (provisional)	Quarter 4 (provisional)
Apprenticeship (level 2)	Under 16	300	100	-	-	100
	16-18	46,700	12,000	8,500	9,600	16,600
	19-24	35,900	9,000	7,200	8,800	10,900
	25+	18,500	5,300	4,400	4,600	4,300
	Total	101,300	26,300	20,100	23,000	31,900
Advanced Apprenticeship (level 3)	Under 16	-	-	-	-	-
	16-18	17,500	4,400	3,700	3,700	5,800
	19-24	23,000	6,200	4,700	5,500	6,600
	25+	12,800	2,900	3,000	3,500	3,500
	Total	53,400	13,500	11,300	12,700	15,900
Higher Level Apprenticeship (Level 4+)	Under 16	-	-	-	-	-
	16-18	-	-	-	-	-
	19-24	100	-	-	-	100
	25+	-	-	-	-	-
	Total	200	-	-	-	100
All Apprenticeships	Under 16	300	100	-	-	100
	16-18	64,300	16,400	12,200	13,300	22,400
	19-24	59,000	15,200	11,900	14,300	17,600
	25+	31,300	8,200	7,300	8,100	7,800
	Total	154,900	39,900	31,500	35,700	47,800

Notes

1) Provisional numbers for 2009/10 are not comparable with previous years. There can be significant variation between provisional and final estimates and typically these numbers can be expected to be revised upwards. While subsequent revisions to 2009/10 data may be different from previous years, in 2008/09 the final number of starts was approximately 2.5% higher than the provisional number of starts at a similar point and the final number of achievements was approximately 13% higher than the provisional number at a similar point.

2) The following data sources have been used; Employer Responsive (ER) – 2009/10 (E12 06/08/10).

3) Volumes are rounded to the nearest hundred.

4) '-' Indicates a base value of less than fifty.

5) Age is calculated based on age at start of the programme rather than based on 31 August.

6) In Table 19.1 quarterly numbers are a count of the number of starts at any point during each quarter. Learners starting more than one framework will appear more than once.

7) In Table 19.2 quarterly numbers are a count of the number of framework achievements at any point during each quarter. Learners achieving more than one framework will appear more than once.

8) Programme-Led Apprenticeships recorded in WBL ILR returns are included in the above figures.

9) In order to be counted as a successful achievement, all elements of the framework must have been achieved.

10) Quarter 1 - 1 August to 31 October; Quarter 2 - 1 November to 31 January; Quarter 3 - 1 February to 30 April; Quarter 4 - 1 May to 31 July.

11) This table shows provisional estimates for 2009/10. Apprenticeship starts and achievements figures for earlier years are available in table 8 of this release. It is not possible to directly compare provisional 2009/10 estimates with figures for previous years.

12) Further breakdowns of the data are available at the Data Service website: www.thedataservice.org.uk/statistics.

Table 20.1: Train to Gain Starts by Level (2009/10)

Level	2009/10				
	Full Year (provisional)	Quarter 1 (provisional)	Quarter 2 (provisional)	Quarter 3 (provisional)	Quarter 4 (provisional)
Foundation Learning Tier	2,700	900	500	900	400
Full Level 2	400,400	102,900	77,900	125,900	93,700
Other Level 2	100	100	-	-	-
Full Level 3	94,600	29,400	16,000	27,500	21,700
Other Level 3	300	200	100	-	100
Level 4 and above	4,300	1,700	800	1,100	700
Skills for Life	66,200	20,100	11,700	19,800	14,600
No Level Assigned	900	300	200	200	200
Total	569,600	155,600	107,200	175,500	131,400

Table 20.2: Train to Gain Achievements by Level (2009/10)

Level	2009/10				
	Full Year (provisional)	Quarter 1 (provisional)	Quarter 2 (provisional)	Quarter 3 (provisional)	Quarter 4 (provisional)
Foundation Learning Tier	3,500	1,100	1,000	800	600
Full Level 2	343,900	88,000	76,200	98,400	81,300
Other Level 2	500	200	200	100	-
Full Level 3	84,500	21,500	20,600	22,500	19,900
Other Level 3	400	200	100	-	-
Level 4 and above	6,600	1,800	1,600	1,700	1,400
Skills for Life	56,400	15,900	14,300	13,800	12,400
No Level Assigned	1,400	600	400	300	200
Total	497,200	129,300	114,400	137,600	115,800

Notes

- 1) Provisional numbers for 2009/10 are not comparable with previous years. There can be significant variation between provisional and final estimates and typically these numbers can be expected to be revised upwards. While subsequent revisions to 2009/10 data may be different from previous years, in 2008/09 the difference between the provisional and the final number of starts was minimal and the final number of achievements was about 15% higher than provisional numbers at a similar point.
- 2) The following data sources have been used; Employer Responsive (ER) – 2009/10 (E12 06/08/10).
- 3) Volumes are rounded to the nearest hundred.
- 4) '-' Indicates a base value of less than fifty.
- 5) In Table 20.1 full-year numbers are a count of the number of starts at any point during the year. Learners starting more than one course will appear more than once.
- 6) In Table 20.2 full-year numbers are a count of the number of achievements at any point during the year. Learners achieving more than one course will appear more than once.
- 7) 'Other Level 2' and 'Other Level 3' qualifications includes learners starting Train to Gain courses accessed through new funding flexibilities. These were made available from January 2009.
- 8) Quarter 1 - 1 August to 31 October; Quarter 2 - 1 November to 31 January; Quarter 3 - 1 February to 30 April; Quarter 4 - 1 May to 31 July.
- 9) This table shows provisional estimates for 2009/10. Train to Gain starts and achievements figures for earlier years are available in table 9 of this release. It is not possible to directly compare provisional 2009/10 estimates with figures for previous years.
- 10) Further breakdowns of the data are available at the Data Service website: www.thedataservice.org.uk/statistics.